

ATG16L2 Antibody (Center K292)
Affinity Purified Rabbit Polyclonal Antibody (Pab)
Catalog # AP11695c

Specification

ATG16L2 Antibody (Center K292) - Product Information

Application	WB, IHC-P,E
Primary Accession	O8NAA4
Other Accession	O6KAU8 , NP_203746.1
Reactivity	Human
Predicted	Mouse
Host	Rabbit
Clonality	Polyclonal
Isotype	Rabbit IgG
Calculated MW	68998
Antigen Region	277-304

ATG16L2 Antibody (Center K292) - Additional Information

Gene ID 89849

Other Names

Autophagy-related protein 16-2, APG16-like 2, WD repeat-containing protein 80, ATG16L2, WDR80

Target/Specificity

This ATG16L2 antibody is generated from rabbits immunized with a KLH conjugated synthetic peptide between 277-304 amino acids from the Central region of human ATG16L2.

Dilution

WB~~1:1000
IHC-P~~1:50~100

Format

Purified polyclonal antibody supplied in PBS with 0.09% (W/V) sodium azide. This antibody is purified through a protein A column, followed by peptide affinity purification.

Storage

Maintain refrigerated at 2-8°C for up to 2 weeks. For long term storage store at -20°C in small aliquots to prevent freeze-thaw cycles.

Precautions

ATG16L2 Antibody (Center K292) is for research use only and not for use in diagnostic or therapeutic procedures.

ATG16L2 Antibody (Center K292) - Protein Information

Name ATG16L2

Synonyms WDR80

Function May play a role in regulating epithelial homeostasis in an ATG16L1-dependent manner.

Cellular Location

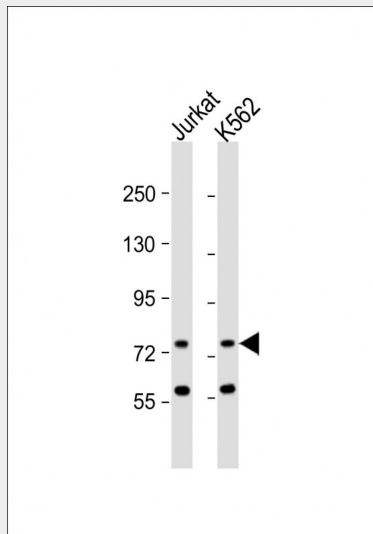
Cytoplasm, cytosol {ECO:0000250|UniProtKB:Q6KAU8}. Note=Localizes also to discrete punctae along the ciliary axoneme. {ECO:0000250|UniProtKB:Q6KAU8}

ATG16L2 Antibody (Center K292) - Protocols

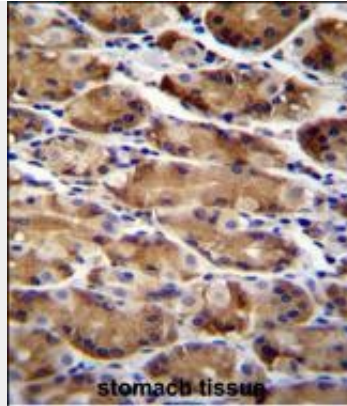
Provided below are standard protocols that you may find useful for product applications.

- [Western Blot](#)
- [Blocking Peptides](#)
- [Dot Blot](#)
- [Immunohistochemistry](#)
- [Immunofluorescence](#)
- [Immunoprecipitation](#)
- [Flow Cytometry](#)
- [Cell Culture](#)

ATG16L2 Antibody (Center K292) - Images



All lanes : Anti-ATG16L2 Antibody (Center K292) at 1:1000 dilution Lane 1: Jurkat whole cell lysate Lane 2: K562 whole cell lysate Lysates/proteins at 20 µg per lane. Secondary Goat Anti-Rabbit IgG, (H+L), Peroxidase conjugated at 1/10000 dilution. Predicted band size : 69 kDa Blocking/Dilution buffer: 5% NFDM/TBST.



ATG16L2 Antibody (Center K292) (Cat. #AP11695c) immunohistochemistry analysis in formalin fixed and paraffin embedded human stomach tissue followed by peroxidase conjugation of the secondary antibody and DAB staining. This data demonstrates the use of ATG16L2 Antibody (Center K292) for immunohistochemistry. Clinical relevance has not been evaluated.

ATG16L2 Antibody (Center K292) - Background

ATG16L2 may play a role in autophagy (By similarity).

ATG16L2 Antibody (Center K292) - References

Hattori, A., et al. DNA Res. 7(6):357-366(2000)

ATG16L2 Antibody (Center K292) - Citations

- [Three-dimensional tumor cell growth stimulates autophagic flux and recapitulates chemotherapy resistance.](#)