

TRPM8 Antibody (N-term)
Purified Rabbit Polyclonal Antibody (Pab)
Catalog # AP11668A**Specification**

TRPM8 Antibody (N-term) - Product Information

Application	WB, IHC-P,E
Primary Accession	O7Z2W7
Other Accession	NP_076985.4
Reactivity	Human
Host	Rabbit
Clonality	Polyclonal
Isotype	Rabbit IgG
Calculated MW	127685
Antigen Region	69-98

TRPM8 Antibody (N-term) - Additional Information**Gene ID** 79054**Other Names**

Transient receptor potential cation channel subfamily M member 8, Long transient receptor potential channel 6, LTrpC-6, LTrpC6, Transient receptor potential p8, Trp-p8, TRPM8, LTRPC6, TRPP8

Target/Specificity

This TRPM8 antibody is generated from rabbits immunized with a KLH conjugated synthetic peptide between 69-98 amino acids from the N-terminal region of human TRPM8.

Dilution

WB~~1:1000
IHC-P~~1:50~100

Format

Purified polyclonal antibody supplied in PBS with 0.09% (W/V) sodium azide. This antibody is prepared by Saturated Ammonium Sulfate (SAS) precipitation followed by dialysis against PBS.

Storage

Maintain refrigerated at 2-8°C for up to 2 weeks. For long term storage store at -20°C in small aliquots to prevent freeze-thaw cycles.

Precautions

TRPM8 Antibody (N-term) is for research use only and not for use in diagnostic or therapeutic procedures.

TRPM8 Antibody (N-term) - Protein Information**Name** TRPM8

Synonyms LTRPC6, TRPP8

Function Receptor-activated non-selective cation channel involved in detection of sensations such as coolness, by being activated by cold temperature below 25 degrees Celsius. Activated by icilin, eucalyptol, menthol, cold and modulation of intracellular pH. Involved in menthol sensation. Permeable for monovalent cations sodium, potassium, and cesium and divalent cation calcium. Temperature sensing is tightly linked to voltage-dependent gating. Activated upon depolarization, changes in temperature resulting in graded shifts of its voltage-dependent activation curves. The chemical agonist menthol functions as a gating modifier, shifting activation curves towards physiological membrane potentials. Temperature sensitivity arises from a tenfold difference in the activation energies associated with voltage-dependent opening and closing. In prostate cancer cells, shows strong inward rectification and high calcium selectivity in contrast to its behavior in normal cells which is characterized by outward rectification and poor cationic selectivity. Plays a role in prostate cancer cell migration (PubMed:[25559186](#)). Isoform 2 and isoform 3 negatively regulate menthol- and cold-induced channel activity by stabilizing the closed state of the channel.

Cellular Location

Cell membrane; Multi-pass membrane protein. Membrane raft. Endoplasmic reticulum membrane. Note=Localizes to membrane rafts but is also located in the cell membrane outside of these regions where channel response to cold is enhanced compared to membrane rafts (By similarity). Located in the endoplasmic reticulum in prostate cancer cells.

Tissue Location

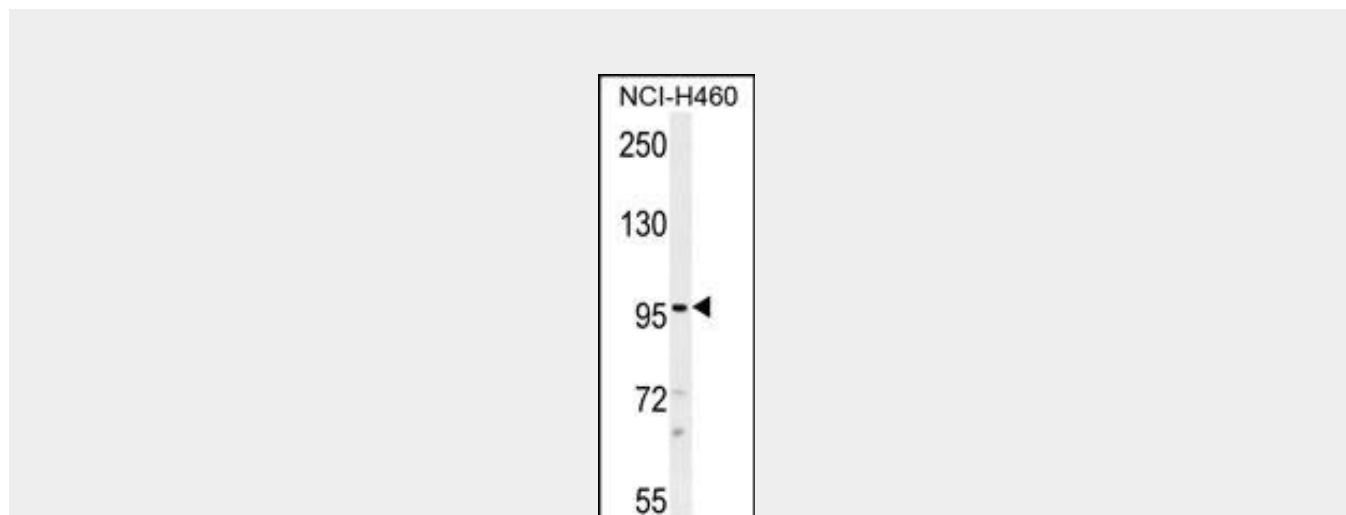
Expressed in prostate. Also expressed in prostate tumors and in non-prostatic primary tumors such as colon, lung, breast and skin tumors.

TRPM8 Antibody (N-term) - Protocols

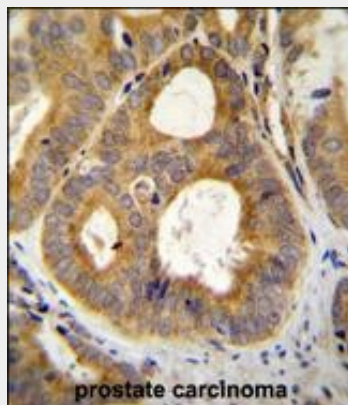
Provided below are standard protocols that you may find useful for product applications.

- [Western Blot](#)
- [Blocking Peptides](#)
- [Dot Blot](#)
- [Immunohistochemistry](#)
- [Immunofluorescence](#)
- [Immunoprecipitation](#)
- [Flow Cytometry](#)
- [Cell Culture](#)

TRPM8 Antibody (N-term) - Images



TRPM8 Antibody (N-term) (Cat. #AP11668a) western blot analysis in NCI-H460 cell line lysates (35ug/lane). This demonstrates the TRPM8 antibody detected the TRPM8 protein (arrow).



TRPM8 Antibody (N-term) (Cat. #AP11668a) immunohistochemistry analysis in formalin fixed and paraffin embedded human prostate carcinoma followed by peroxidase conjugation of the secondary antibody and DAB staining. This data demonstrates the use of TRPM8 Antibody (N-term) for immunohistochemistry. Clinical relevance has not been evaluated.

TRPM8 Antibody (N-term) - Background

Receptor-activated non-selective cation channel involved in detection of sensations such as coolness, by being activated by cold temperature below 25 degrees Celsius. Activated by icilin, eucalyptol, menthol, cold and modulation of intracellular pH. Involved in menthol sensation. Permeable for monovalent cations sodium, potassium, and cesium and divalent cation calcium. Temperature sensing is tightly linked to voltage-dependent gating. Activated upon depolarization, changes in temperature resulting in graded shifts of its voltage-dependent activation curves. The chemical agonists menthol functions as a gating modifier, shifting activation curves towards physiological membrane potentials. Temperature sensitivity arises from a tenfold difference in the activation energies associated with voltage-dependent opening and closing.

TRPM8 Antibody (N-term) - References

- Yee, N.S., et al. Cancer Lett. 297(1):49-55(2010)
- Bailey, S.D., et al. Diabetes Care 33(10):2250-2253(2010)
- Kuhn, F.J., et al. J. Biol. Chem. 285(35):26806-26814(2010)
- Gkika, D., et al. Oncogene 29(32):4611-4616(2010)
- Van Haute, C., et al. ScientificWorldJournal 10, 1597-1611 (2010) :