

PRSS21 Antibody (Center)
Affinity Purified Rabbit Polyclonal Antibody (Pab)
Catalog # AP11645c

Specification

PRSS21 Antibody (Center) - Product Information

Application	WB, IHC-P,E
Primary Accession	O9Y6M0
Other Accession	NP_659206.1 , NP_006790.1
Reactivity	Human, Mouse
Host	Rabbit
Clonality	Polyclonal
Isotype	Rabbit IgG
Antigen Region	165-193

PRSS21 Antibody (Center) - Additional Information

Gene ID 10942

Other Names

Testisin, 3421-, Eosinophil serine protease 1, ESP-1, Serine protease 21, PRSS21, ESP1, TEST1

Target/Specificity

This PRSS21 antibody is generated from rabbits immunized with a KLH conjugated synthetic peptide between 165-193 amino acids from the Central region of human PRSS21.

Dilution

WB~~1:1000
IHC-P~~1:10~50

Format

Purified polyclonal antibody supplied in PBS with 0.09% (W/V) sodium azide. This antibody is purified through a protein A column, followed by peptide affinity purification.

Storage

Maintain refrigerated at 2-8°C for up to 2 weeks. For long term storage store at -20°C in small aliquots to prevent freeze-thaw cycles.

Precautions

PRSS21 Antibody (Center) is for research use only and not for use in diagnostic or therapeutic procedures.

PRSS21 Antibody (Center) - Protein Information

Name PRSS21

Synonyms ESP1, TEST1

Function Could regulate proteolytic events associated with testicular germ cell maturation.

Cellular Location

Cell membrane; Lipid-anchor, GPI- anchor

Tissue Location

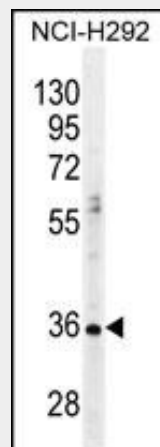
Expressed predominantly in premeiotic testicular germ cells, mostly late pachytene and diplotene spermatocytes

PRSS21 Antibody (Center) - Protocols

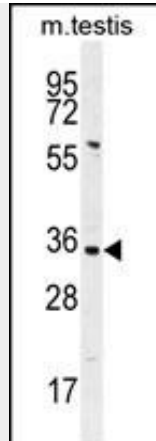
Provided below are standard protocols that you may find useful for product applications.

- [Western Blot](#)
- [Blocking Peptides](#)
- [Dot Blot](#)
- [Immunohistochemistry](#)
- [Immunofluorescence](#)
- [Immunoprecipitation](#)
- [Flow Cytometry](#)
- [Cell Culture](#)

PRSS21 Antibody (Center) - Images



PRSS21 Antibody (Center) (Cat. #AP11645c) western blot analysis in NCI-H292 cell line lysates (35ug/lane). This demonstrates the PRSS21 antibody detected the PRSS21 protein (arrow).



PRSS21 Antibody (Center) (Cat. #AP11645c) western blot analysis in mouse testis tissue lysates (35ug/lane). This demonstrates the PRSS21 antibody detected the PRSS21 protein (arrow).



PRSS21 Antibody (Center) (Cat. #AP11645c) immunohistochemistry analysis in formalin fixed and paraffin embedded human testis tissue followed by peroxidase conjugation of the secondary antibody and DAB staining. This data demonstrates the use of PRSS21 Antibody (Center) for immunohistochemistry. Clinical relevance has not been evaluated.

PRSS21 Antibody (Center) - Background

This gene encodes a cell-surface anchored serine protease, which is a member of the trypsin family of serine proteases. It is predicted to be active on peptide linkages involving the carboxyl group of lysine or arginine. The protein localizes to the cytoplasm and the plasma membrane of premeiotic testicular germ cells and it may be involved in progression of testicular tumors of germ cell origin. Alternative splicing of this gene results in three transcript variants encoding three different isoforms. [provided by RefSeq].

PRSS21 Antibody (Center) - References

- Yeom, S.Y., et al. FEBS Lett. 584(8):1469-1475(2010)
- Netzel-Arnett, S., et al. Biol. Reprod. 81(5):921-932(2009)
- Kempkensteffen, C., et al. J. Cancer Res. Clin. Oncol. 132(12):765-770(2006)
- Manton, K.J., et al. Br. J. Cancer 92(4):760-769(2005)
- Clark, H.F., et al. Genome Res. 13(10):2265-2270(2003)

PRSS21 Antibody (Center) - Citations

- [A+-helix of protein C inhibitor \(PCI\) is a cell-penetrating peptide that mediates cell](#)

[membrane permeation of PCI.](#)