

**FAM118B Antibody (Center)**  
**Affinity Purified Rabbit Polyclonal Antibody (Pab)**  
**Catalog # AP11613c**

**Specification**

---

**FAM118B Antibody (Center) - Product Information**

Application	WB,E
Primary Accession	<a href="#">Q9BPY3</a>
Other Accession	<a href="#">Q4QQT2</a> , <a href="#">Q8C569</a> , <a href="#">Q4R836</a> , <a href="#">Q5E977</a> , <a href="#">NP_078832.1</a>
Reactivity	Human
Predicted	Bovine, Monkey, Mouse, Rat
Host	Rabbit
Clonality	Polyclonal
Isotype	Rabbit IgG
Calculated MW	39499
Antigen Region	212-240

**FAM118B Antibody (Center) - Additional Information**

**Gene ID** 79607

**Other Names**

Protein FAM118B, FAM118B

**Target/Specificity**

This FAM118B antibody is generated from rabbits immunized with a KLH conjugated synthetic peptide between 212-240 amino acids from the Central region of human FAM118B.

**Dilution**

WB~~1:1000

**Format**

Purified polyclonal antibody supplied in PBS with 0.09% (W/V) sodium azide. This antibody is purified through a protein A column, followed by peptide affinity purification.

**Storage**

Maintain refrigerated at 2-8°C for up to 2 weeks. For long term storage store at -20°C in small aliquots to prevent freeze-thaw cycles.

**Precautions**

FAM118B Antibody (Center) is for research use only and not for use in diagnostic or therapeutic procedures.

**FAM118B Antibody (Center) - Protein Information**

**Name** FAM118B

**Function** May play a role in Cajal bodies formation.

**Cellular Location**

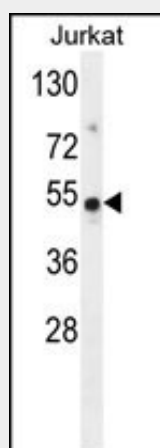
Nucleus, Cajal body

**FAM118B Antibody (Center) - Protocols**

Provided below are standard protocols that you may find useful for product applications.

- [Western Blot](#)
- [Blocking Peptides](#)
- [Dot Blot](#)
- [Immunohistochemistry](#)
- [Immunofluorescence](#)
- [Immunoprecipitation](#)
- [Flow Cytometry](#)
- [Cell Culture](#)

**FAM118B Antibody (Center) - Images**



FAM118B Antibody (Center) (Cat. #AP11613c) western blot analysis in Jurkat cell line lysates (35ug/lane). This demonstrates the FAM118B antibody detected the FAM118B protein (arrow).

**FAM118B Antibody (Center) - Background**

The specific function of the protein remains unknown.

**FAM118B Antibody (Center) - References**

- Lamesch, P., et al. Genomics 89(3):307-315(2007)  
Wang, A.G., et al. Biochem. Biophys. Res. Commun. 345(3):1022-1032(2006)