

**COL1A2 Antibody (N-term)**  
**Affinity Purified Rabbit Polyclonal Antibody (Pab)**  
**Catalog # AP11562a**

**Specification**

---

**COL1A2 Antibody (N-term) - Product Information**

|                   |                             |
|-------------------|-----------------------------|
| Application       | WB,E                        |
| Primary Accession | <a href="#">P08123</a>      |
| Other Accession   | <a href="#">NP_000080.2</a> |
| Reactivity        | Human                       |
| Host              | Rabbit                      |
| Clonality         | Polyclonal                  |
| Isotype           | Rabbit IgG                  |
| Calculated MW     | 129314                      |
| Antigen Region    | 16-43                       |

**COL1A2 Antibody (N-term) - Additional Information**

**Gene ID** 1278

**Other Names**

Collagen alpha-2(I) chain, Alpha-2 type I collagen, COL1A2

**Target/Specificity**

This COL1A2 antibody is generated from rabbits immunized with a KLH conjugated synthetic peptide between 16-43 amino acids from the N-terminal region of human COL1A2.

**Dilution**

WB~~1:1000

**Format**

Purified polyclonal antibody supplied in PBS with 0.09% (W/V) sodium azide. This antibody is purified through a protein A column, followed by peptide affinity purification.

**Storage**

Maintain refrigerated at 2-8°C for up to 2 weeks. For long term storage store at -20°C in small aliquots to prevent freeze-thaw cycles.

**Precautions**

COL1A2 Antibody (N-term) is for research use only and not for use in diagnostic or therapeutic procedures.

**COL1A2 Antibody (N-term) - Protein Information**

**Name** COL1A2

**Function** Type I collagen is a member of group I collagen (fibrillar forming collagen).

### Cellular Location

Secreted, extracellular space, extracellular matrix {ECO:0000255|PROSITE-ProRule:PRU00793}

### Tissue Location

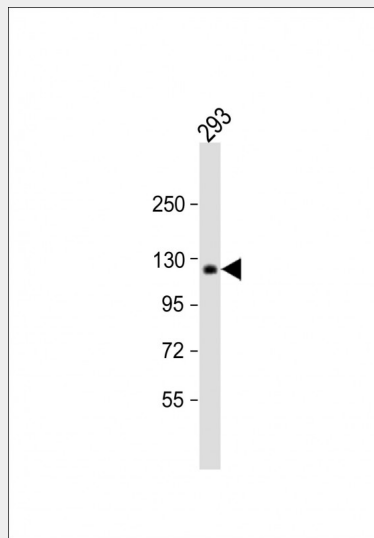
Forms the fibrils of tendon, ligaments and bones. In bones the fibrils are mineralized with calcium hydroxyapatite

### COL1A2 Antibody (N-term) - Protocols

Provided below are standard protocols that you may find useful for product applications.

- [Western Blot](#)
- [Blocking Peptides](#)
- [Dot Blot](#)
- [Immunohistochemistry](#)
- [Immunofluorescence](#)
- [Immunoprecipitation](#)
- [Flow Cytometry](#)
- [Cell Culture](#)

### COL1A2 Antibody (N-term) - Images



Anti-COL1A2 Antibody (N-term) at 1:1000 dilution + 293 whole cell lysate Lysates/proteins at 20 µg per lane. Secondary Goat Anti-Rabbit IgG, (H+L), Peroxidase conjugated at 1/10000 dilution. Predicted band size : 129 kDa Blocking/Dilution buffer: 5% NFDM/TBST.

### COL1A2 Antibody (N-term) - Background

This gene encodes the pro- $\alpha$ 2 chain of type I collagen whose triple helix comprises two  $\alpha$ 1 chains and one  $\alpha$ 2 chain. Type I is a fibril-forming collagen found in most connective tissues and is abundant in bone, cornea, dermis and tendon. Mutations in this gene are associated with osteogenesis imperfecta types I-IV, Ehlers-Danlos syndrome type VIIB, recessive Ehlers-Danlos syndrome Classical type, idiopathic osteoporosis, and atypical Marfan syndrome. Symptoms associated with mutations in this gene, however, tend to be less severe than mutations in the

gene for the alpha1 chain of type I collagen (COL1A1) reflecting the different role of alpha2 chains in matrix integrity. Three transcripts, resulting from the use of alternate polyadenylation signals, have been identified for this gene. [provided by R. Dalgleish].

#### **COL1A2 Antibody (N-term) - References**

Blades, H.Z., et al. Bone 47(5):989-994(2010)  
Romero, R., et al. Am. J. Obstet. Gynecol. 203 (4), 361 (2010) :  
Bailey, S.D., et al. Diabetes Care 33(10):2250-2253(2010)  
Bozec, A., et al. J. Cell Biol. 190(6):1093-1106(2010)  
Cheung, M.S., et al. J. Bone Miner. Res. (2010) In press :