

**RASSF8 antibody (N-term)**  
**Affinity Purified Rabbit Polyclonal Antibody (Pab)**  
**Catalog # AP11535a**

**Specification**

---

**RASSF8 antibody (N-term) - Product Information**

Application	WB, FC,E
Primary Accession	<a href="#">Q8NHQ8</a>
Other Accession	<a href="#">NP_001158219.1</a>
Reactivity	Human
Host	Rabbit
Clonality	Polyclonal
Isotype	Rabbit IgG
Calculated MW	48327
Antigen Region	96-124

**RASSF8 antibody (N-term) - Additional Information**

**Gene ID** 11228

**Other Names**

Ras association domain-containing protein 8, Carcinoma-associated protein HOJ-1, RASSF8, C12orf2

**Target/Specificity**

This RASSF8 antibody is generated from rabbits immunized with a KLH conjugated synthetic peptide between 96-124 amino acids from the N-terminal region of human RASSF8.

**Dilution**

WB~~1:1000  
FC~~1:10~50

**Format**

Purified polyclonal antibody supplied in PBS with 0.09% (W/V) sodium azide. This antibody is purified through a protein A column, followed by peptide affinity purification.

**Storage**

Maintain refrigerated at 2-8°C for up to 2 weeks. For long term storage store at -20°C in small aliquots to prevent freeze-thaw cycles.

**Precautions**

RASSF8 antibody (N-term) is for research use only and not for use in diagnostic or therapeutic procedures.

**RASSF8 antibody (N-term) - Protein Information**

**Name** RASSF8

## Synonyms C12orf2

### Tissue Location

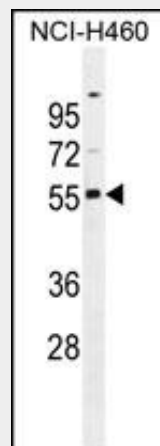
Widely expressed as a 6.2 kb transcript. A 2.2 kb alternatively spliced transcript is expressed exclusively in testis

## RASSF8 antibody (N-term) - Protocols

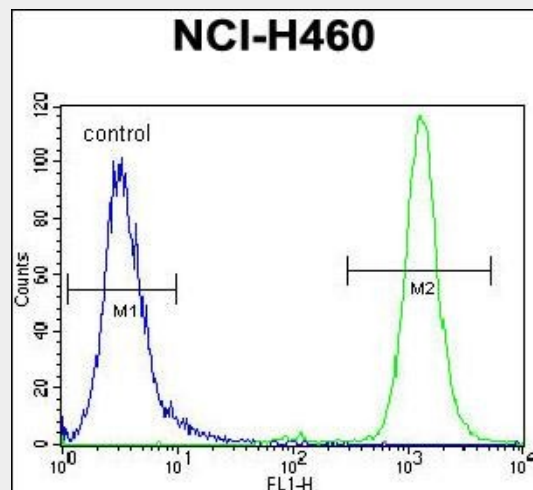
Provided below are standard protocols that you may find useful for product applications.

- [Western Blot](#)
- [Blocking Peptides](#)
- [Dot Blot](#)
- [Immunohistochemistry](#)
- [Immunofluorescence](#)
- [Immunoprecipitation](#)
- [Flow Cytometry](#)
- [Cell Culture](#)

## RASSF8 antibody (N-term) - Images



RASSF8 antibody (N-term) (Cat. #AP11535a) western blot analysis in NCI-H460 cell line lysates (35ug/lane). This demonstrates the RASSF8 antibody detected the RASSF8 protein (arrow).



RASSF8 antibody (N-term) (Cat. #AP11535a) flow cytometric analysis of NCI-H460 cells (right histogram) compared to a negative control cell (left histogram). FITC-conjugated goat-anti-rabbit secondary antibodies were used for the analysis.

#### **RASSF8 antibody (N-term) - References**

- Lock, F.E., et al. *Oncogene* 29(30):4307-4316(2010)  
Rose, J.E., et al. *Mol. Med.* 16 (7-8), 247-253 (2010) :  
Falvella, F.S., et al. *Lung Cancer* 56(1):1-7(2007)  
Lamesch, P., et al. *Genomics* 89(3):307-315(2007)  
Falvella, F.S., et al. *Oncogene* 25(28):3934-3938(2006)