

**JHDM2b Antibody (C-term)**  
**Purified Rabbit Polyclonal Antibody (Pab)**  
**Catalog # AP11446b**

**Specification**

---

**JHDM2b Antibody (C-term) - Product Information**

Application	WB, FC,E
Primary Accession	<a href="#">O7LBC6</a>
Other Accession	<a href="#">O6ZPY7</a> , <a href="#">NP_057688.2</a>
Reactivity	Mouse
Host	Rabbit
Clonality	Polyclonal
Isotype	Rabbit IgG
Calculated MW	191581
Antigen Region	1328-1358

**JHDM2b Antibody (C-term) - Additional Information**

**Gene ID** 51780

**Other Names**

Lysine-specific demethylase 3B, 11411-, JmjC domain-containing histone demethylation protein 2B, Jumonji domain-containing protein 1B, Nuclear protein 5qNCA, KDM3B, C5orf7, JHDM2B, JMJD1B, KIAA1082

**Target/Specificity**

This JHDM2b antibody is generated from rabbits immunized with a KLH conjugated synthetic peptide between 1328-1358 amino acids from the C-terminal region of human JHDM2b.

**Dilution**

WB~~1:1000  
FC~~1:10~50

**Format**

Purified polyclonal antibody supplied in PBS with 0.09% (W/V) sodium azide. This antibody is prepared by Saturated Ammonium Sulfate (SAS) precipitation followed by dialysis against PBS.

**Storage**

Maintain refrigerated at 2-8°C for up to 2 weeks. For long term storage store at -20°C in small aliquots to prevent freeze-thaw cycles.

**Precautions**

JHDM2b Antibody (C-term) is for research use only and not for use in diagnostic or therapeutic procedures.

**JHDM2b Antibody (C-term) - Protein Information**

**Name** KDM3B

**Synonyms** C5orf7, JHDM2B, JMJD1B, KIAA1082

**Function** Histone demethylase that specifically demethylates 'Lys-9' of histone H3, thereby playing a central role in histone code. Demethylation of Lys residue generates formaldehyde and succinate. May have tumor suppressor activity.

**Cellular Location**

Nucleus.

**Tissue Location**

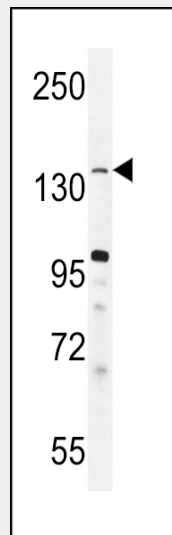
Ubiquitous. Highly expressed in placenta, skeletal muscle, kidney, heart and liver.

**JHDM2b Antibody (C-term) - Protocols**

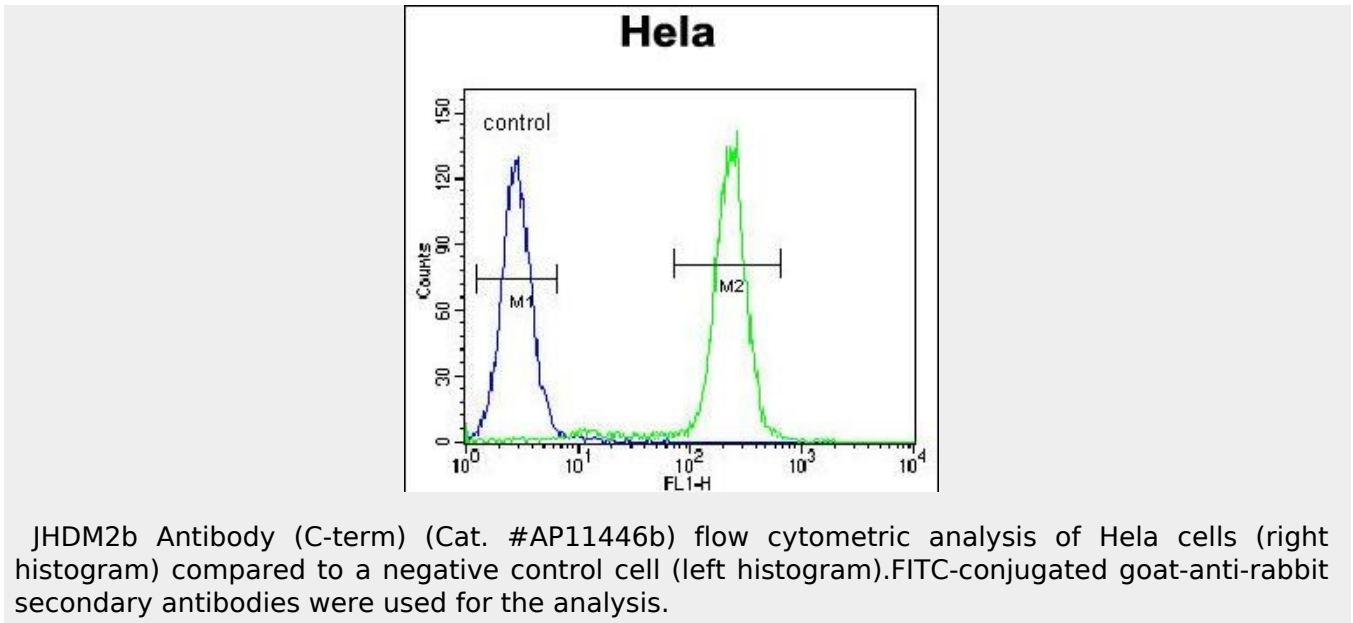
Provided below are standard protocols that you may find useful for product applications.

- [Western Blot](#)
- [Blocking Peptides](#)
- [Dot Blot](#)
- [Immunohistochemistry](#)
- [Immunofluorescence](#)
- [Immunoprecipitation](#)
- [Flow Cytometry](#)
- [Cell Culture](#)

**JHDM2b Antibody (C-term) - Images**



JHDM2b Antibody (C-term) (Cat. #AP11446b) western blot analysis in mouse heart tissue lysates (35ug/lane). This demonstrates the JHDM2b antibody detected the JHDM2b protein (arrow).



#### JHDM2b Antibody (C-term) - Background

Histone demethylase that specifically demethylates 'Lys-9' of histone H3, thereby playing a central role in histone code. Demethylation of Lys residue generates formaldehyde and succinate. May have tumor suppressor activity.

#### JHDM2b Antibody (C-term) - References

- Guo, G., et al. Dev. Cell 18(4):675-685(2010)
- Allis, C.D., et al. Cell 131(4):633-636(2007)
- Blackshaw, S., et al. PLoS Biol. 2 (9), E247 (2004) :
- Okazaki, N., et al. DNA Res. 10(4):167-180(2003)
- Stryke, D., et al. Nucleic Acids Res. 31(1):278-281(2003)