

**RLBP1L2 Antibody (C-term)**  
**Affinity Purified Rabbit Polyclonal Antibody (Pab)**  
**Catalog # AP11406b****Specification**

---

**RLBP1L2 Antibody (C-term) - Product Information**

|                   |   |
|-------------------|---|
| Application       | WB, IHC-P,E   |
| Primary Accession | <a href="#">Q5SYC1</a>  |
| Other Accession   | <a href="#">A6JUQ6</a> , <a href="#">Q8BG92</a> , <a href="#">Q95KF7</a> , <a href="#">NP_001010852.2</a> |
| Reactivity        | Mouse   |
| Predicted         | Monkey, Rat   |
| Host              | Rabbit  |
| Clonality         | Polyclonal  |
| Isotype           | Rabbit IgG  |
| Calculated MW     | 38000   |
| Antigen Region    | 251-279   |

**RLBP1L2 Antibody (C-term) - Additional Information****Gene ID** 134829**Other Names**

Clavesin-2, Retinaldehyde-binding protein 1-like 2, CLVS2, C6orf212, C6orf213, RLBP1L2

**Target/Specificity**

This RLBP1L2 antibody is generated from rabbits immunized with a KLH conjugated synthetic peptide between 251-279 amino acids from the C-terminal region of human RLBP1L2.

**Dilution**WB~~1:1000  
IHC-P~~1:10~50**Format**

Purified polyclonal antibody supplied in PBS with 0.09% (W/V) sodium azide. This antibody is purified through a protein A column, followed by peptide affinity purification.

**Storage**

Maintain refrigerated at 2-8°C for up to 2 weeks. For long term storage store at -20°C in small aliquots to prevent freeze-thaw cycles.

**Precautions**

RLBP1L2 Antibody (C-term) is for research use only and not for use in diagnostic or therapeutic procedures.

**RLBP1L2 Antibody (C-term) - Protein Information****Name** CLVS2

**Synonyms** C6orf212, C6orf213, RLBP1L2

**Function** Required for normal morphology of late endosomes and/or lysosomes in neurons (By similarity). Binds phosphatidylinositol 3,5- biphosphate (PtdIns(3,5)P2).

**Cellular Location**

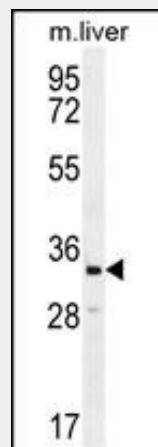
Golgi apparatus, trans-Golgi network membrane; Peripheral membrane protein. Cytoplasmic vesicle, clathrin-coated vesicle. Early endosome membrane; Peripheral membrane protein

**RLBP1L2 Antibody (C-term) - Protocols**

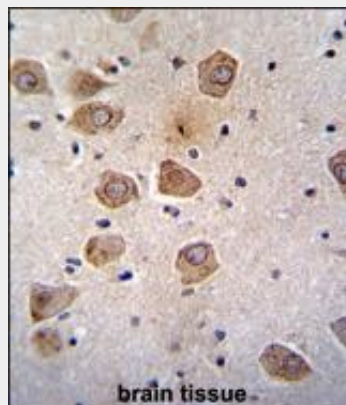
Provided below are standard protocols that you may find useful for product applications.

- [Western Blot](#)
- [Blocking Peptides](#)
- [Dot Blot](#)
- [Immunohistochemistry](#)
- [Immunofluorescence](#)
- [Immunoprecipitation](#)
- [Flow Cytometry](#)
- [Cell Culture](#)

**RLBP1L2 Antibody (C-term) - Images**



RLBP1L2 Antibody (C-term) (Cat. #AP11406b) western blot analysis in mouse liver tissue lysates (35ug/lane). This demonstrates the RLBP1L2 antibody detected the RLBP1L2 protein (arrow).



RLBP1L2 Antibody (C-term) (Cat. #AP11406b) immunohistochemistry analysis in formalin fixed and paraffin embedded human brain tissue followed by peroxidase conjugation of the secondary antibody and DAB staining. This data demonstrates the use of RLBP1L2 Antibody (C-term) for immunohistochemistry. Clinical relevance has not been evaluated.

**RLBP1L2 Antibody (C-term) - Background**

Required for normal morphology of late endosomes and/or lysosomes in neurons (By similarity). Binds phosphatidylinositol 3,5-bisphosphate (PtdIns(3,5)P<sub>2</sub>).

**RLBP1L2 Antibody (C-term) - References**

Katoh, Y., et al. J. Biol. Chem. 284(40):27646-27654(2009)