

PHOX2B Antibody (Center)
Affinity Purified Rabbit Polyclonal Antibody (Pab)
Catalog # AP11341C

Specification

PHOX2B Antibody (Center) - Product Information

Application	IF, WB,E
Primary Accession	O99453
Other Accession	O35690 , O62782 , O62066 , O14813 , NP_003915.2 , G5EC89
Reactivity	Mouse
Predicted	C.Elegans, Human, Rat
Host	Rabbit
Clonality	Polyclonal
Isotype	Rabbit IgG
Antigen Region	104-130

PHOX2B Antibody (Center) - Additional Information

Gene ID 8929

Other Names

Paired mesoderm homeobox protein 2B, Neuroblastoma Phox, NBPhox, PHOX2B homeodomain protein, Paired-like homeobox 2B, PHOX2B, PMX2B

Target/Specificity

This PHOX2B antibody is generated from rabbits immunized with a KLH conjugated synthetic peptide between 104-130 amino acids from the Central region of human PHOX2B.

Dilution

IF~~1:10~50
WB~~1:1000

Format

Purified polyclonal antibody supplied in PBS with 0.09% (W/V) sodium azide. This antibody is purified through a protein A column, followed by peptide affinity purification.

Storage

Maintain refrigerated at 2-8°C for up to 2 weeks. For long term storage store at -20°C in small aliquots to prevent freeze-thaw cycles.

Precautions

PHOX2B Antibody (Center) is for research use only and not for use in diagnostic or therapeutic procedures.

PHOX2B Antibody (Center) - Protein Information

Name PHOX2B

Synonyms PMX2B

Function Involved in the development of several major noradrenergic neuron populations, including the locus coeruleus. Transcription factor which could determine a neurotransmitter phenotype in vertebrates. Enhances second-messenger-mediated activation of the dopamine beta-hydroxylase and c-fos promoters, and of several enhancers including cAMP- response element and serum-response element.

Cellular Location

Nucleus {ECO:0000255|PROSITE-ProRule:PRU00108}.

Tissue Location

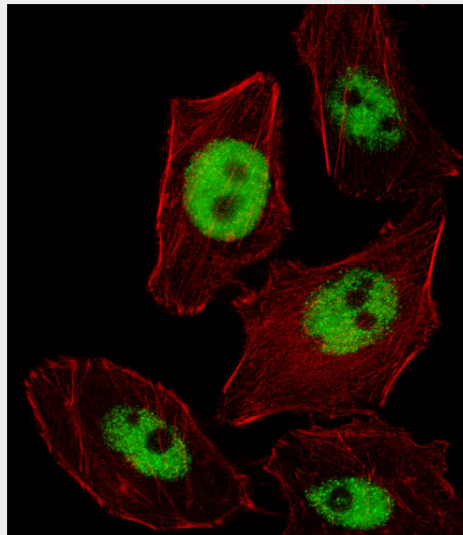
Expressed in neuroblastoma, brain and adrenal gland

PHOX2B Antibody (Center) - Protocols

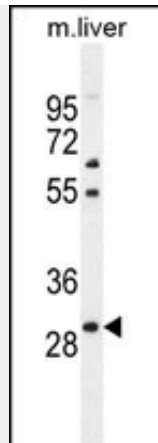
Provided below are standard protocols that you may find useful for product applications.

- [Western Blot](#)
- [Blocking Peptides](#)
- [Dot Blot](#)
- [Immunohistochemistry](#)
- [Immunofluorescence](#)
- [Immunoprecipitation](#)
- [Flow Cytometry](#)
- [Cell Culture](#)

PHOX2B Antibody (Center) - Images



Fluorescent image of U251 cell stained with PHOX2B Antibody (Center)(Cat#AP11341c).U251 cells were fixed with 4% PFA (20 min), permeabilized with Triton X-100 (0.1%, 10 min), then incubated with PHOX2B primary antibody (1:25, 1 h at 37°C). For secondary antibody, Alexa Fluor® 488 conjugated donkey anti-rabbit antibody (green) was used (1:400, 50 min at 37°C).Cytoplasmic actin was counterstained with Alexa Fluor® 555 (red) conjugated Phalloidin (7units/ml, 1 h at 37°C).PHOX2B immunoreactivity is localized to Nucleus significantly.



PHOX2B Antibody (Center) (Cat. #AP11341c) western blot analysis in mouse liver tissue lysates (35ug/lane). This demonstrates the PHOX2B antibody detected the PHOX2B protein (arrow).

PHOX2B Antibody (Center) - Background

The DNA-associated protein encoded by this gene is a member of the paired family of homeobox proteins localized to the nucleus. The protein functions as a transcription factor involved in the development of several major noradrenergic neuron populations and the determination of neurotransmitter phenotype. The gene product is linked to enhancement of second messenger-mediated activation of the dopamine beta-hydroxylase, c-fos promoters and several enhancers, including cyclic amp-response element and serum-response element. [provided by RefSeq].

PHOX2B Antibody (Center) - References

Rudzinski, E., et al. *Pediatr. Dev. Pathol.* 13(4):291-299(2010)
Janoueix-Lerosey, I., et al. *Oncogene* 29(11):1566-1579(2010)
Tu, E., et al. *Hum. Pathol.* 41(3):392-400(2010)
Arai, H., et al. *J. Hum. Genet.* 55(1):4-7(2010)
Dubreuil, V., et al. *J. Neurosci.* 29(47):14836-14846(2009)

PHOX2B Antibody (Center) - Citations

- [The homeodomain transcription factor Phox2 in the stellate ganglion of the squid *Loligo pealei*.](#)