

RPS6KL1 Antibody
Affinity Purified Rabbit Polyclonal Antibody (Pab)
Catalog # AP11334a

Specification

RPS6KL1 Antibody - Product Information

Application	WB,E
Primary Accession	O9Y6S9
Other Accession	NP_113652.1
Reactivity	Human
Host	Rabbit
Clonality	Polyclonal
Isotype	Rabbit IgG
Calculated MW	60036

RPS6KL1 Antibody - Additional Information

Gene ID 83694

Other Names

Ribosomal protein S6 kinase-like 1, RPS6KL1

Target/Specificity

This RPS6KL1 antibody is generated from rabbits immunized with a recombinant protein of human RPS6KL1.

Dilution

WB~~1:1000

Format

Purified polyclonal antibody supplied in PBS with 0.09% (W/V) sodium azide. This antibody is purified through a protein A column, followed by peptide affinity purification.

Storage

Maintain refrigerated at 2-8°C for up to 2 weeks. For long term storage store at -20°C in small aliquots to prevent freeze-thaw cycles.

Precautions

RPS6KL1 Antibody is for research use only and not for use in diagnostic or therapeutic procedures.

RPS6KL1 Antibody - Protein Information

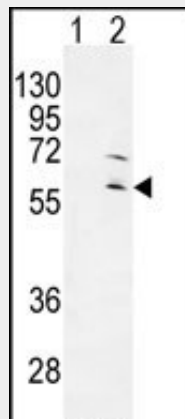
Name RPS6KL1

RPS6KL1 Antibody - Protocols

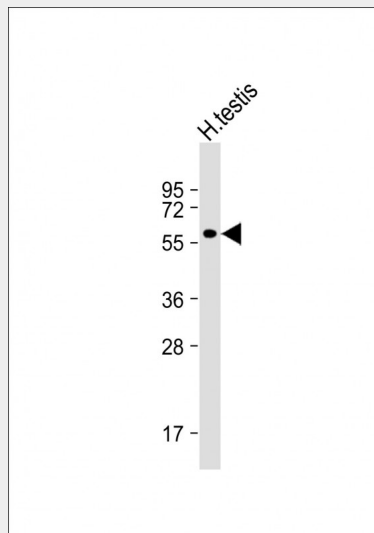
Provided below are standard protocols that you may find useful for product applications.

- [Western Blot](#)
- [Blocking Peptides](#)
- [Dot Blot](#)
- [Immunohistochemistry](#)
- [Immunofluorescence](#)
- [Immunoprecipitation](#)
- [Flow Cytometry](#)
- [Cell Culture](#)

RPS6KL1 Antibody - Images



Western blot analysis of RPS6KL1 (arrow) using rabbit polyclonal RPS6KL1 Antibody (Cat. #AP11334a). 293 cell lysates (2 ug/lane) either nontransfected (Lane 1) or transiently transfected (Lane 2) with the RPS6KL1 gene.



Anti-RPS6KL1 Antibody at 1:1000 dilution + H. testis whole cell lysate Lysates/proteins at 20 µg per lane. Secondary Goat Anti-Rabbit IgG, (H+L), Peroxidase conjugated at 1/10000 dilution. Predicted band size : 60 kDa Blocking/Dilution buffer: 5% NFDm/TBST.

RPS6KL1 Antibody - References

Heilig, R., et al. Nature 421(6923):601-607(2003)