

HAUS3 Antibody (Center)
Affinity Purified Rabbit Polyclonal Antibody (Pab)
Catalog # AP11303c

Specification

HAUS3 Antibody (Center) - Product Information

Application	WB, IHC-P,E
Primary Accession	O68CZ6
Other Accession	NP_078787.2
Reactivity	Human
Host	Rabbit
Clonality	Polyclonal
Isotype	Rabbit IgG
Calculated MW	69650
Antigen Region	372-400

HAUS3 Antibody (Center) - Additional Information

Gene ID 79441

Other Names

HAUS augmin-like complex subunit 3, HAUS3, C4orf15

Target/Specificity

This HAUS3 antibody is generated from rabbits immunized with a KLH conjugated synthetic peptide between 372-400 amino acids from the Central region of human HAUS3.

Dilution

WB~~1:1000
IHC-P~~1:10~50

Format

Purified polyclonal antibody supplied in PBS with 0.09% (W/V) sodium azide. This antibody is purified through a protein A column, followed by peptide affinity purification.

Storage

Maintain refrigerated at 2-8°C for up to 2 weeks. For long term storage store at -20°C in small aliquots to prevent freeze-thaw cycles.

Precautions

HAUS3 Antibody (Center) is for research use only and not for use in diagnostic or therapeutic procedures.

HAUS3 Antibody (Center) - Protein Information

Name HAUS3

Synonyms C4orf15

Function Contributes to mitotic spindle assembly, maintenance of centrosome integrity and completion of cytokinesis as part of the HAUS augmin-like complex.

Cellular Location

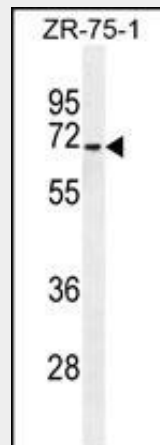
Cytoplasm, cytoskeleton, microtubule organizing center, centrosome. Cytoplasm, cytoskeleton, spindle Note=Localizes to interphase centrosomes and to mitotic spindle microtubules.

HAUS3 Antibody (Center) - Protocols

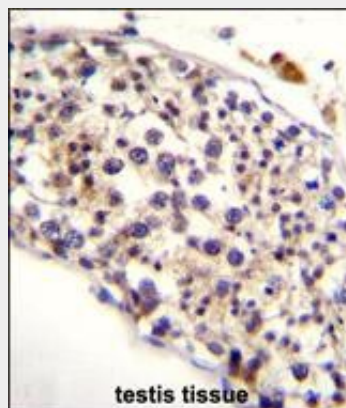
Provided below are standard protocols that you may find useful for product applications.

- [Western Blot](#)
- [Blocking Peptides](#)
- [Dot Blot](#)
- [Immunohistochemistry](#)
- [Immunofluorescence](#)
- [Immunoprecipitation](#)
- [Flow Cytometry](#)
- [Cell Culture](#)

HAUS3 Antibody (Center) - Images



HAUS3 Antibody (Center) (Cat. #AP11303c) western blot analysis in ZR-75-1 cell line lysates (35ug/lane). This demonstrates the HAUS3 antibody detected the HAUS3 protein (arrow).



HAUS3 Antibody (Center) (Cat. #AP11303c) immunohistochemistry analysis in formalin fixed and

paraffin embedded human testis tissue followed by peroxidase conjugation of the secondary antibody and DAB staining. This data demonstrates the use of HAUS3 Antibody (Center) for immunohistochemistry. Clinical relevance has not been evaluated.

HAUS3 Antibody (Center) - Background

HAUS3 is 1 of 8 subunits of the 390-kD human augmin complex, or HAUS complex. The augmin complex was first identified in *Drosophila*, and its name comes from the Latin verb 'augmentare,' meaning 'to increase.' The augmin complex is a microtubule-binding complex involved in microtubule generation within the mitotic spindle and is vital to mitotic spindle assembly (Goshima et al., 2008 [PubMed 18443220]; Uehara et al., 2009 [PubMed 19369198]).

HAUS3 Antibody (Center) - References

Shah, S.P., et al. *Nature* 461(7265):809-813(2009)
Lawo, S., et al. *Curr. Biol.* 19(10):816-826(2009)
Uehara, R., et al. *Proc. Natl. Acad. Sci. U.S.A.* 106(17):6998-7003(2009)
Goshima, G., et al. *J. Cell Biol.* 181(3):421-429(2008)