

CT45A Antibody (N-term)
Affinity Purified Rabbit Polyclonal Antibody (Pab)
Catalog # AP11278a

Specification

CT45A Antibody (N-term) - Product Information

Application	WB, FC,E
Primary Accession	Q5HYN5
Other Accession	Q6NSH3 , Q8NHU0 , Q8N7B7 , Q5DJT8 , NP_001017417.1
Reactivity	Human
Host	Rabbit
Clonality	Polyclonal
Isotype	Rabbit IgG
Calculated MW	21273
Antigen Region	1-30

CT45A Antibody (N-term) - Additional Information

Gene ID 541466

Other Names

Cancer/testis antigen family 45 member A1, Cancer/testis antigen 45-1, Cancer/testis antigen 45A1, CT45A1, CT45-1

Target/Specificity

This CT45A antibody is generated from rabbits immunized with a KLH conjugated synthetic peptide between 1-30 amino acids from the N-terminal region of human CT45A.

Dilution

WB~~1:1000
FC~~1:10~50

Format

Purified polyclonal antibody supplied in PBS with 0.09% (W/V) sodium azide. This antibody is purified through a protein A column, followed by peptide affinity purification.

Storage

Maintain refrigerated at 2-8°C for up to 2 weeks. For long term storage store at -20°C in small aliquots to prevent freeze-thaw cycles.

Precautions

CT45A Antibody (N-term) is for research use only and not for use in diagnostic or therapeutic procedures.

CT45A Antibody (N-term) - Protein Information

Name CT45A1 ([HGNC:33267](#))

Tissue Location

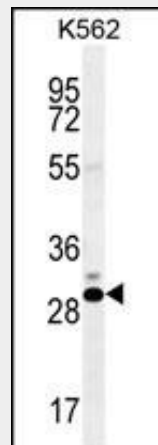
Testis specific. Expressed in cancer cell lines.

CT45A Antibody (N-term) - Protocols

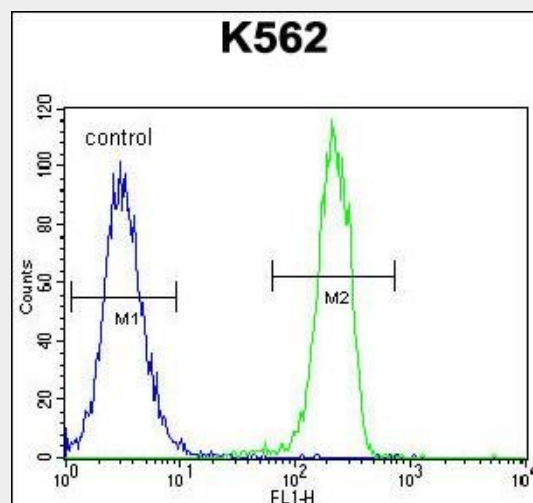
Provided below are standard protocols that you may find useful for product applications.

- [Western Blot](#)
- [Blocking Peptides](#)
- [Dot Blot](#)
- [Immunohistochemistry](#)
- [Immunofluorescence](#)
- [Immunoprecipitation](#)
- [Flow Cytometry](#)
- [Cell Culture](#)

CT45A Antibody (N-term) - Images



CT45A Antibody (N-term) (Cat. #AP11278a) western blot analysis in K562 cell line lysates (35ug/lane). This demonstrates the CT45A antibody detected the CT45A protein (arrow).



CT45A1 Antibody (N-term) (Cat. #AP11278a) flow cytometric analysis of K562 cells (right histogram) compared to a negative control cell (left histogram). FITC-conjugated goat-anti-rabbit secondary antibodies were used for the analysis.

CT45A Antibody (N-term) - References

- Chen, Y.T., et al. Proc. Natl. Acad. Sci. U.S.A. 107(7):3093-3098(2010)
Chen, Y.T., et al. Int. J. Cancer 124(12):2893-2898(2009)
Chen, Y.T., et al. Proc. Natl. Acad. Sci. U.S.A. 102(22):7940-7945(2005)