

**SPACA5B Antibody (N-term)**  
**Affinity Purified Rabbit Polyclonal Antibody (Pab)**  
**Catalog # AP11268a**

**Specification**

---

**SPACA5B Antibody (N-term) - Product Information**

Application	<b>WB, IHC-P,E</b>
Primary Accession	<a href="#">O96QH8</a>
Other Accession	<a href="#">NP_001073369.1</a>
Reactivity	<b>Human</b>
Host	<b>Rabbit</b>
Clonality	<b>Polyclonal</b>
Isotype	<b>Rabbit IgG</b>
Calculated MW	<b>17896</b>
Antigen Region	<b>17-45</b>

**SPACA5B Antibody (N-term) - Additional Information**

**Gene ID** 389852;729201

**Other Names**

Sperm acrosome-associated protein 5, Lysozyme-like protein 5, Sperm-specific lysozyme-like protein X, SLLP-X, SPACA5, LYZL5, SPACA5A

**Target/Specificity**

This SPACA5B antibody is generated from rabbits immunized with a KLH conjugated synthetic peptide between 17-45 amino acids from the N-terminal region of human SPACA5B.

**Dilution**

WB~~1:1000  
IHC-P~~1:10~50

**Format**

Purified polyclonal antibody supplied in PBS with 0.09% (W/V) sodium azide. This antibody is purified through a protein A column, followed by peptide affinity purification.

**Storage**

Maintain refrigerated at 2-8°C for up to 2 weeks. For long term storage store at -20°C in small aliquots to prevent freeze-thaw cycles.

**Precautions**

SPACA5B Antibody (N-term) is for research use only and not for use in diagnostic or therapeutic procedures.

**SPACA5B Antibody (N-term) - Protein Information**

**Name** SPACA5

**Synonyms** LYZL5, SPACA5A

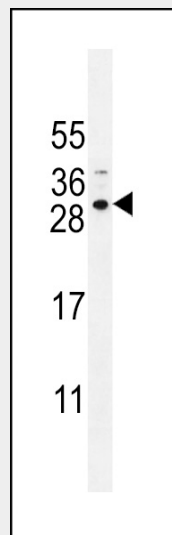
**Cellular Location**  
Secreted.

### SPACA5B Antibody (N-term) - Protocols

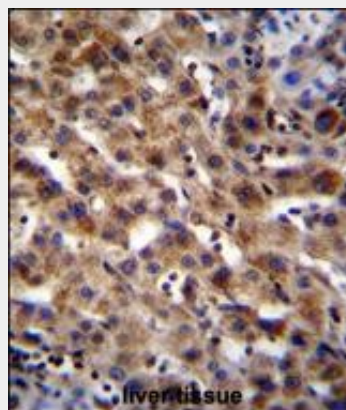
Provided below are standard protocols that you may find useful for product applications.

- [Western Blot](#)
- [Blocking Peptides](#)
- [Dot Blot](#)
- [Immunohistochemistry](#)
- [Immunofluorescence](#)
- [Immunoprecipitation](#)
- [Flow Cytometry](#)
- [Cell Culture](#)

### SPACA5B Antibody (N-term) - Images



SPACA5B Antibody (N-term) (Cat. #AP11268a) western blot analysis in NCI-H292 cell line lysates (35ug/lane). This demonstrates the SPACA5B antibody detected the SPACA5B protein (arrow).



SPACA5B Antibody (N-term) (Cat. #AP11268a) immunohistochemistry analysis in formalin fixed

and paraffin embedded human liver tissue followed by peroxidase conjugation of the secondary antibody and DAB staining. This data demonstrates the use of SPACA5B Antibody (N-term) for immunohistochemistry. Clinical relevance has not been evaluated.

**SPACA5B Antibody (N-term) - References**

Chen, Y.T., et al. Genes Chromosomes Cancer 45(4):392-400(2006)

Ross, M.T., et al. Nature 434(7031):325-337(2005)

Clark, H.F., et al. Genome Res. 13(10):2265-2270(2003)