

**GIGYF1 Antibody (Center)**  
**Affinity Purified Rabbit Polyclonal Antibody (Pab)**  
**Catalog # AP11245c****Specification**

---

**GIGYF1 Antibody (Center) - Product Information**

|                   |  |
|-------------------|--|
| Application       | <b>WB,E</b>  |
| Primary Accession | <a href="#">O75420</a>                               |
| Other Accession   | <a href="#">O99MR1</a> , <a href="#">NP_072096.2</a> |
| Reactivity        | <b>Human</b>   |
| Predicted         | <b>Mouse</b>   |
| Host              | <b>Rabbit</b>  |
| Clonality         | <b>Polyclonal</b>                                    |
| Isotype           | <b>Rabbit IgG</b>                                    |
| Calculated MW     | <b>114601</b>  |
| Antigen Region    | <b>666-694</b>                                       |

**GIGYF1 Antibody (Center) - Additional Information****Other Names**

PERQ amino acid-rich with GYF domain-containing protein 1, GRB10-interacting GYF protein 1, GIGYF1, CDS2, PERQ1

**Target/Specificity**

This GIGYF1 antibody is generated from rabbits immunized with a KLH conjugated synthetic peptide between 666-694 amino acids from the Central region of human GIGYF1.

**Dilution**

WB~~1:2000

**Format**

Purified polyclonal antibody supplied in PBS with 0.09% (W/V) sodium azide. This antibody is purified through a protein A column, followed by peptide affinity purification.

**Storage**

Maintain refrigerated at 2-8°C for up to 2 weeks. For long term storage store at -20°C in small aliquots to prevent freeze-thaw cycles.

**Precautions**

GIGYF1 Antibody (Center) is for research use only and not for use in diagnostic or therapeutic procedures.

**GIGYF1 Antibody (Center) - Protein Information**

**Name** GIGYF1

**Synonyms** CDS2, PERQ1

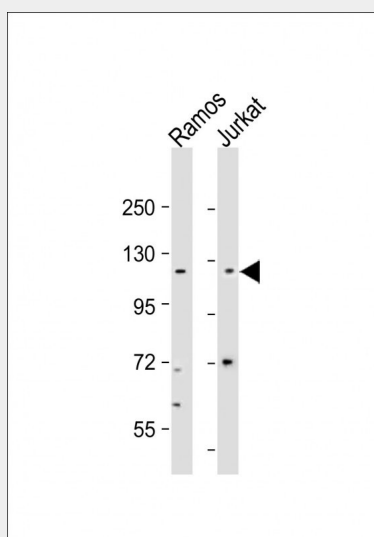
**Function** May act cooperatively with GRB10 to regulate tyrosine kinase receptor signaling. May increase IGF1 receptor phosphorylation under IGF1 stimulation as well as phosphorylation of IRS1 and SHC1 (By similarity).

### GIGYF1 Antibody (Center) - Protocols

Provided below are standard protocols that you may find useful for product applications.

- [Western Blot](#)
- [Blocking Peptides](#)
- [Dot Blot](#)
- [Immunohistochemistry](#)
- [Immunofluorescence](#)
- [Immunoprecipitation](#)
- [Flow Cytometry](#)
- [Cell Culture](#)

### GIGYF1 Antibody (Center) - Images



All lanes : Anti-GIGYF1 Antibody (Center) at 1:2000 dilution Lane 1: Ramos whole cell lysate Lane 2: Jurkat whole cell lysate Lysates/proteins at 20 µg per lane. Secondary Goat Anti-Rabbit IgG, (H+L), Peroxidase conjugated at 1/10000 dilution. Predicted band size : 115 kDa Blocking/Dilution buffer: 5% NFDM/TBST.

### GIGYF1 Antibody (Center) - Background

May act cooperatively with GRB10 to regulate tyrosine kinase receptor signaling. May increase IGF1 receptor phosphorylation under IGF1 stimulation as well as phosphorylation of IRS1 and SHC1 (By similarity).

### GIGYF1 Antibody (Center) - References

Szafranski, K., et al. *Genome Biol.* 8 (8), R154 (2007) :  
Beausoleil, S.A., et al. *Nat. Biotechnol.* 24(10):1285-1292(2006)  
Giovannone, B., et al. *J. Biol. Chem.* 278(34):31564-31573(2003)  
Wilson, M.D., et al. *Nucleic Acids Res.* 29(6):1352-1365(2001)  
Glockner, G., et al. *Genome Res.* 8(10):1060-1073(1998)