

EPGN Antibody (N-term)
Affinity Purified Rabbit Polyclonal Antibody (Pab)
Catalog # AP11242a

Specification

EPGN Antibody (N-term) - Product Information

Application	WB, FC,E
Primary Accession	O6UW88
Other Accession	NP_001013460.1
Reactivity	Human
Host	Rabbit
Clonality	Polyclonal
Isotype	Rabbit IgG
Calculated MW	17091
Antigen Region	24-51

EPGN Antibody (N-term) - Additional Information

Gene ID 255324

Other Names

Epigen, Epithelial mitogen, EPG, EPGN

Target/Specificity

This EPGN antibody is generated from rabbits immunized with a KLH conjugated synthetic peptide between 24-51 amino acids from the N-terminal region of human EPGN.

Dilution

WB~~1:1000

FC~~1:10~50

Format

Purified polyclonal antibody supplied in PBS with 0.09% (W/V) sodium azide. This antibody is purified through a protein A column, followed by peptide affinity purification.

Storage

Maintain refrigerated at 2-8°C for up to 2 weeks. For long term storage store at -20°C in small aliquots to prevent freeze-thaw cycles.

Precautions

EPGN Antibody (N-term) is for research use only and not for use in diagnostic or therapeutic procedures.

EPGN Antibody (N-term) - Protein Information

Name EPGN

Function Promotes the growth of epithelial cells. May stimulate the phosphorylation of EGFR and

mitogen-activated protein kinases.

Cellular Location

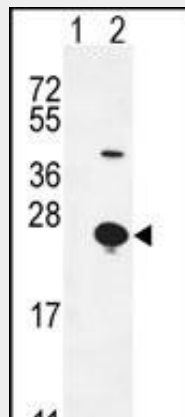
[Isoform 1]: Membrane; Single-pass type I membrane protein [Isoform 3]: Secreted. [Isoform 5]: Secreted.

EPGN Antibody (N-term) - Protocols

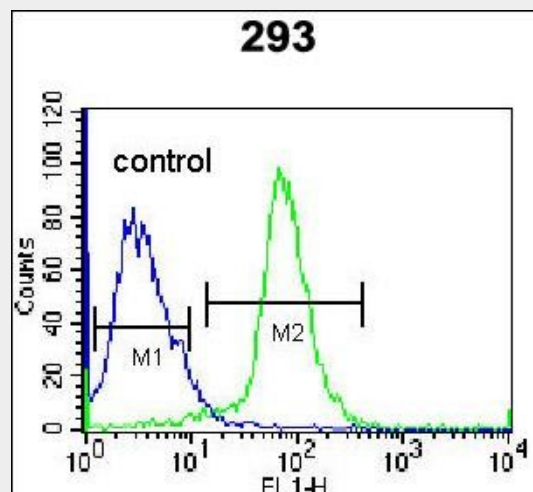
Provided below are standard protocols that you may find useful for product applications.

- [Western Blot](#)
- [Blocking Peptides](#)
- [Dot Blot](#)
- [Immunohistochemistry](#)
- [Immunofluorescence](#)
- [Immunoprecipitation](#)
- [Flow Cytometry](#)
- [Cell Culture](#)

EPGN Antibody (N-term) - Images



Western blot analysis of EPGN (arrow) using rabbit polyclonal EPGN Antibody (N-term) (Cat. #AP11242a). 293 cell lysates (2 ug/lane) either nontransfected (Lane 1) or transiently transfected (Lane 2) with the EPGN gene.



EPGN Antibody (N-term) (Cat. #AP11242a) flow cytometric analysis of 293 cells (right histogram) compared to a negative control cell (left histogram). FITC-conjugated goat-anti-rabbit secondary antibodies were used for the analysis.

EPGN Antibody (N-term) - Background

Promotes the growth of epithelial cells. May stimulate the phosphorylation of EGFR and mitogen-activated protein kinases.

EPGN Antibody (N-term) - References

Lasky-Su, J., et al. Am. J. Med. Genet. B Neuropsychiatr. Genet. 147B (8), 1345-1354 (2008) :
Kochupurakkal, B.S., et al. J. Biol. Chem. 280(9):8503-8512(2005)
Zhang, Z., et al. Protein Sci. 13(10):2819-2824(2004)
Clark, H.F., et al. Genome Res. 13(10):2265-2270(2003)
Strachan, L., et al. J. Biol. Chem. 276(21):18265-18271(2001)