

**GLTSCR1 Antibody (Center)**  
**Affinity Purified Rabbit Polyclonal Antibody (Pab)**  
**Catalog # AP11219c**

**Specification**

---

**GLTSCR1 Antibody (Center) - Product Information**

Application	WB,E
Primary Accession	<a href="#">O9NZM4</a>
Other Accession	<a href="#">NP_056526</a>
Reactivity	Human
Host	Rabbit
Clonality	Polyclonal
Isotype	Rabbit IgG
Antigen Region	1112-1139

**GLTSCR1 Antibody (Center) - Additional Information**

**Gene ID** 29998

**Other Names**

Glioma tumor suppressor candidate region gene 1 protein, GLTSCR1

**Target/Specificity**

This GLTSCR1 antibody is generated from rabbits immunized with a KLH conjugated synthetic peptide between 1112-1139 amino acids from the Central region of human GLTSCR1.

**Dilution**

WB~~1:1000

**Format**

Purified polyclonal antibody supplied in PBS with 0.09% (W/V) sodium azide. This antibody is purified through a protein A column, followed by peptide affinity purification.

**Storage**

Maintain refrigerated at 2-8°C for up to 2 weeks. For long term storage store at -20°C in small aliquots to prevent freeze-thaw cycles.

**Precautions**

GLTSCR1 Antibody (Center) is for research use only and not for use in diagnostic or therapeutic procedures.

**GLTSCR1 Antibody (Center) - Protein Information**

**Name** BICRA ([HGNC:4332](#))

**Function** Component of SWI/SNF chromatin remodeling subcomplex GBAF that carries out key enzymatic activities, changing chromatin structure by altering DNA-histone contacts within a nucleosome in an ATP- dependent manner (PubMed:[29374058](#)). May play a role in BRD4-mediated

gene transcription (PubMed:[21555454](#)).

#### Cellular Location

Nucleus.

#### Tissue Location

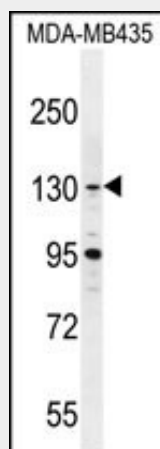
Expressed at moderate levels in heart, brain, placenta, skeletal muscle, and pancreas, and at lower levels in lung, liver and kidney.

### GLTSCR1 Antibody (Center) - Protocols

Provided below are standard protocols that you may find useful for product applications.

- [Western Blot](#)
- [Blocking Peptides](#)
- [Dot Blot](#)
- [Immunohistochemistry](#)
- [Immunofluorescence](#)
- [Immunoprecipitation](#)
- [Flow Cytometry](#)
- [Cell Culture](#)

### GLTSCR1 Antibody (Center) - Images



GLTSCR1 Antibody (Center) (Cat. #AP11219c) western blot analysis in MDA-MB435 cell line lysates (35ug/lane). This demonstrates the GLTSCR1 antibody detected the GLTSCR1 protein (arrow).

### GLTSCR1 Antibody (Center) - References

Rose, J. Phd, et al. Mol. Med. (2010) In press :  
Rajaraman, P., et al. Neuro-oncology 12(1):37-48(2010)  
Wu, C., et al. Proteomics 7(11):1775-1785(2007)  
Yang, P., et al. Cancer 103(11):2363-2372(2005)  
Rockenbauer, E., et al. Carcinogenesis 23(7):1149-1153(2002)