

**TIEG Antibody (Center)**  
**Purified Rabbit Polyclonal Antibody (Pab)**  
**Catalog # AP11203c**

**Specification**

---

**TIEG Antibody (Center) - Product Information**

Application	WB, FC,E
Primary Accession	<a href="#">O13118</a>
Other Accession	<a href="#">NP_005646</a>
Reactivity	Human
Host	Rabbit
Clonality	Polyclonal
Isotype	Rabbit IgG
Calculated MW	52555
Antigen Region	198-225

**TIEG Antibody (Center) - Additional Information**

**Gene ID** 7071

**Other Names**

Krueppel-like factor 10, EGR-alpha, Transforming growth factor-beta-inducible early growth response protein 1, TGFB-inducible early growth response protein 1, TIEG-1, KLF10, TIEG, TIEG1

**Target/Specificity**

This TIEG antibody is generated from rabbits immunized with a KLH conjugated synthetic peptide between 198-225 amino acids from the Central region of human TIEG.

**Dilution**

WB~~1:1000  
FC~~1:10~50

**Format**

Purified polyclonal antibody supplied in PBS with 0.09% (W/V) sodium azide. This antibody is prepared by Saturated Ammonium Sulfate (SAS) precipitation followed by dialysis against PBS.

**Storage**

Maintain refrigerated at 2-8°C for up to 2 weeks. For long term storage store at -20°C in small aliquots to prevent freeze-thaw cycles.

**Precautions**

TIEG Antibody (Center) is for research use only and not for use in diagnostic or therapeutic procedures.

**TIEG Antibody (Center) - Protein Information**

**Name** KLF10

## Synonyms TIEG, TIEG1

**Function** Transcriptional repressor which binds to the consensus sequence 5'-GGTGTG-3'. Plays a role in the regulation of the circadian clock; binds to the GC box sequence in the promoter of the core clock component ARTNL/BMAL1 and represses its transcriptional activity. Regulates the circadian expression of genes involved in lipogenesis, gluconeogenesis, and glycolysis in the liver. Represses the expression of PCK2, a rate-limiting step enzyme of gluconeogenesis (By similarity). May play a role in the cell cycle regulation.

## Cellular Location

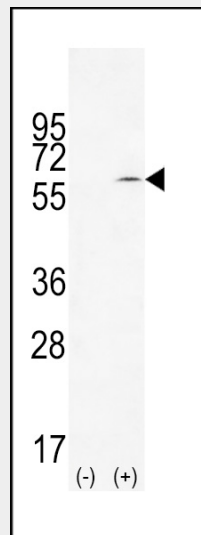
Nucleus {ECO:0000250|UniProtKB:O89091}.

## TIEG Antibody (Center) - Protocols

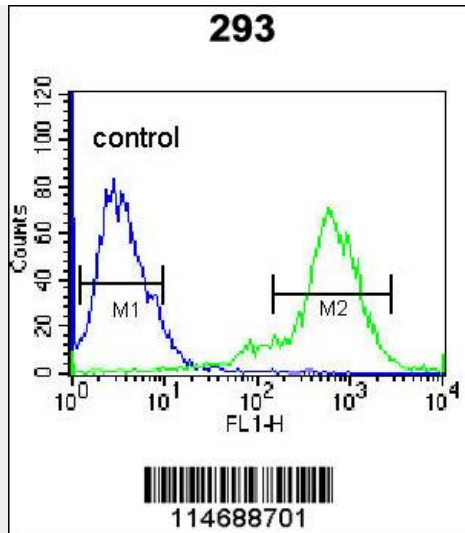
Provided below are standard protocols that you may find useful for product applications.

- [Western Blot](#)
- [Blocking Peptides](#)
- [Dot Blot](#)
- [Immunohistochemistry](#)
- [Immunofluorescence](#)
- [Immunoprecipitation](#)
- [Flow Cytometry](#)
- [Cell Culture](#)

## TIEG Antibody (Center) - Images



Western blot analysis of TIEG (arrow) using rabbit polyclonal TIEG Antibody (Center) (Cat. #AP11203c). 293 cell lysates (2 ug/lane) either nontransfected (Lane 1) or transiently transfected (Lane 2) with the TIEG gene.



TIEG Antibody (Center) (Cat. #AP11203c) flow cytometric analysis of 293 cells (right histogram) compared to a negative control cell (left histogram). FITC-conjugated goat-anti-rabbit secondary antibodies were used for the analysis.

**TIEG Antibody (Center) - Background**

Transcriptional repressor involved in the regulation of cell growth. Inhibits cell growth. Binds to the consensus sequence 5'-GGTGTG-3'.

**TIEG Antibody (Center) - References**

Kim, J., et al. *Biochem. Biophys. Res. Commun.* 401(3):412-416(2010)  
 Joslyn, G., et al. *Alcohol. Clin. Exp. Res.* 34(5):800-812(2010)  
 Subramaniam, M., et al. *Biofactors* 36(1):8-18(2010)  
 Johnatty, S.E., et al. *PLoS Genet.* 6 (7), E1001016 (2010) :  
 Yerges, L.M., et al. *J. Bone Miner. Res.* 24(12):2039-2049(2009)