

**ECOP Antibody (Center)**  
**Affinity Purified Rabbit Polyclonal Antibody (Pab)**  
**Catalog # AP11197c**

**Specification**

---

**ECOP Antibody (Center) - Product Information**

Application	WB,E
Primary Accession	<a href="#">O96AW1</a>
Other Accession	<a href="#">A6QNZ8</a> , <a href="#">NP_110423.3</a>
Reactivity	Mouse
Predicted	Bovine
Host	Rabbit
Clonality	Polyclonal
Isotype	Rabbit IgG
Calculated MW	19224
Antigen Region	65-95

**ECOP Antibody (Center) - Additional Information**

**Gene ID** 81552

**Other Names**

Vesicular, overexpressed in cancer, prosurvival protein 1, EGFR-coamplified and overexpressed protein, ECop, Glioblastoma-amplified secreted protein, Putative NF-kappa-B-activating protein 055N, VOPP1, ECOP, GASP

**Target/Specificity**

This ECOP antibody is generated from rabbits immunized with a KLH conjugated synthetic peptide between 65-95 amino acids from the Central region of human ECOP.

**Dilution**

WB~~1:1000

**Format**

Purified polyclonal antibody supplied in PBS with 0.09% (W/V) sodium azide. This antibody is purified through a protein A column, followed by peptide affinity purification.

**Storage**

Maintain refrigerated at 2-8°C for up to 2 weeks. For long term storage store at -20°C in small aliquots to prevent freeze-thaw cycles.

**Precautions**

ECOP Antibody (Center) is for research use only and not for use in diagnostic or therapeutic procedures.

**ECOP Antibody (Center) - Protein Information**

**Name** VOPP1 ([HGNC:34518](#))

### Synonyms ECOP, GASP

**Function** Increases the transcriptional activity of NFKB1 by facilitating its nuclear translocation, DNA-binding and associated apoptotic response, when overexpressed (PubMed:[15735698](#)). May sequester WWOX in lysosomal vesicles and thereby regulate WWOX role as tumor suppressor (PubMed:[30285739](#)).

### Cellular Location

Cytoplasmic vesicle membrane; Single-pass type I membrane protein. Late endosome membrane; Single-pass membrane protein. Lysosome membrane; Single-pass membrane protein. Note=When overexpressed, localizes in the nucleus and perinuclear regions.

### Tissue Location

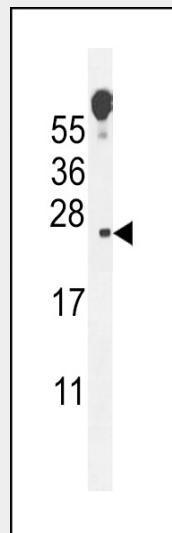
Widely expressed with highest levels in thymus and ovary.

### ECOP Antibody (Center) - Protocols

Provided below are standard protocols that you may find useful for product applications.

- [Western Blot](#)
- [Blocking Peptides](#)
- [Dot Blot](#)
- [Immunohistochemistry](#)
- [Immunofluorescence](#)
- [Immunoprecipitation](#)
- [Flow Cytometry](#)
- [Cell Culture](#)

### ECOP Antibody (Center) - Images



ECOP Antibody (Center) (Cat. #AP11197c) western blot analysis in mouse lung tissue lysates (35ug/lane). This demonstrates the ECOP antibody detected the ECOP protein (arrow).

### ECOP Antibody (Center) - Background

Increases the transcriptional activity of NFKB1 by facilitating its nuclear translocation, DNA-binding and associated apoptotic response, when overexpressed.

**ECOP Antibody (Center) - References**

- Yoshida, T., et al. Int. J. Mol. Med. 25(4):649-656(2010)  
Oguri, M., et al. Am. J. Hypertens. 23(1):70-77(2010)  
Baras, A., et al. Oncogene 28(32):2919-2924(2009)  
Chechlinska, M., et al. BMC Genomics 10, 261 (2009) :  
Brem, H., et al. Mol. Med. 13 (1-2), 30-39 (2007) :