

OTUD1 Antibody (Center)
Affinity Purified Rabbit Polyclonal Antibody (Pab)
Catalog # AP11168C

Specification

OTUD1 Antibody (Center) - Product Information

Application	WB, IHC-P,E
Primary Accession	O5VV17
Other Accession	NP_001138845.1
Reactivity	Human
Host	Rabbit
Clonality	Polyclonal
Isotype	Rabbit IgG
Calculated MW	51063
Antigen Region	282-311

OTUD1 Antibody (Center) - Additional Information

Gene ID 220213

Other Names

OTU domain-containing protein 1, DUBA-7, OTUD1, DUBA7, OTDC1

Target/Specificity

This OTUD1 antibody is generated from rabbits immunized with a KLH conjugated synthetic peptide between 282-311 amino acids from the Central region of human OTUD1.

Dilution

WB~~1:1000
IHC-P~~1:50~100

Format

Purified polyclonal antibody supplied in PBS with 0.09% (W/V) sodium azide. This antibody is purified through a protein A column, followed by peptide affinity purification.

Storage

Maintain refrigerated at 2-8°C for up to 2 weeks. For long term storage store at -20°C in small aliquots to prevent freeze-thaw cycles.

Precautions

OTUD1 Antibody (Center) is for research use only and not for use in diagnostic or therapeutic procedures.

OTUD1 Antibody (Center) - Protein Information

Name OTUD1 {ECO:0000303|PubMed:23827681, ECO:0000312|HGNC:HGNC:27346}

Function Deubiquitinating enzyme that specifically hydrolyzes 'Lys- 63'-linked polyubiquitin to

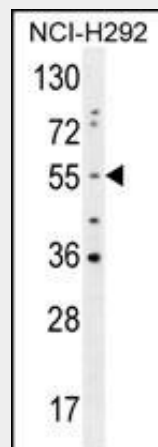
monoubiquitin (PubMed:[23827681](#)). Required for the stability and translation of a subset mRNAs with a high abundance of rare codons by mediating deubiquitination of 40S ribosomal protein RPS10/eS10, thereby antagonizing ZNF598-mediated 40S ubiquitination (PubMed:[36445135](#)). The abundance of rare codons in mRNAs can limit the translation rate and can lead to ribosome collisions that trigger activation of ribosome quality control (RQC) pathway by ZNF598 (PubMed:[36445135](#)). OTUD1-mediated deubiquitination prevents activation of the RQC and subsequent dissociation of ribosomes and stimulates formation of polysomes and translation (PubMed:[36445135](#)).

OTUD1 Antibody (Center) - Protocols

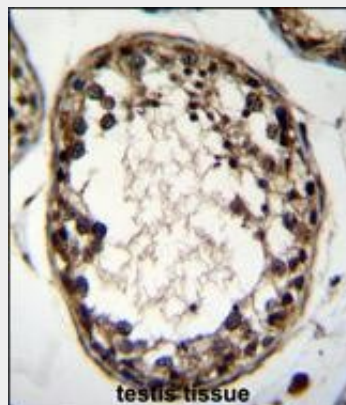
Provided below are standard protocols that you may find useful for product applications.

- [Western Blot](#)
- [Blocking Peptides](#)
- [Dot Blot](#)
- [Immunohistochemistry](#)
- [Immunofluorescence](#)
- [Immunoprecipitation](#)
- [Flow Cytometry](#)
- [Cell Culture](#)

OTUD1 Antibody (Center) - Images



OTUD1 Antibody (Center) (Cat. #AP11168c) western blot analysis in NCI-H292 cell line lysates (35ug/lane). This demonstrates the OTUD1 antibody detected the OTUD1 protein (arrow).



OTUD1 Antibody (Center) (Cat. #AP11168c) immunohistochemistry analysis in formalin fixed and paraffin embedded human testis tissue followed by peroxidase conjugation of the secondary antibody and DAB staining. This data demonstrates the use of OTUD1 Antibody (Center) for immunohistochemistry. Clinical relevance has not been evaluated.

OTUD1 Antibody (Center) - Background

Deubiquitinating enzymes (DUBs; see MIM 603478) are proteases that specifically cleave ubiquitin (MIM 191339) linkages, negating the action of ubiquitin ligases. DUBA7 belongs to a DUB subfamily characterized by an ovarian tumor (OTU) domain. [supplied by OMIM].

OTUD1 Antibody (Center) - References

Franke, A., et al. Gastroenterology 135(4):1207-1215(2008)
Kayagaki, N., et al. Science 318(5856):1628-1632(2007)
Deloukas, P., et al. Nature 429(6990):375-381(2004)
Makarova, K.S., et al. Trends Biochem. Sci. 25(2):50-52(2000)