

PMPCA Antibody (C-term)
Affinity Purified Rabbit Polyclonal Antibody (Pab)
Catalog # AP11161b

Specification

PMPCA Antibody (C-term) - Product Information

| | |
|-------------------|-----------------------------|
| Application | WB, FC,E |
| Primary Accession | O10713 |
| Other Accession | NP_055975.1 |
| Reactivity | Human |
| Host | Rabbit |
| Clonality | Polyclonal |
| Isotype | Rabbit IgG |
| Calculated MW | 58253 |
| Antigen Region | 454-483 |

PMPCA Antibody (C-term) - Additional Information

Gene ID 23203

Other Names

Mitochondrial-processing peptidase subunit alpha, Alpha-MPP, P-55, PMPCA, INPP5E, KIAA0123, MPPA

Target/Specificity

This PMPCA antibody is generated from rabbits immunized with a KLH conjugated synthetic peptide between 454-483 amino acids from the C-terminal region of human PMPCA.

Dilution

WB~~1:1000
FC~~1:10~50

Format

Purified polyclonal antibody supplied in PBS with 0.09% (W/V) sodium azide. This antibody is purified through a protein A column, followed by peptide affinity purification.

Storage

Maintain refrigerated at 2-8°C for up to 2 weeks. For long term storage store at -20°C in small aliquots to prevent freeze-thaw cycles.

Precautions

PMPCA Antibody (C-term) is for research use only and not for use in diagnostic or therapeutic procedures.

PMPCA Antibody (C-term) - Protein Information

Name PMPCA

Synonyms INPP5E, KIAA0123, MPPA

Function Substrate recognition and binding subunit of the essential mitochondrial processing protease (MPP), which cleaves the mitochondrial sequence off newly imported precursors proteins.

Cellular Location

Mitochondrion matrix {ECO:0000250|UniProtKB:P20069}. Mitochondrion inner membrane

Tissue Location

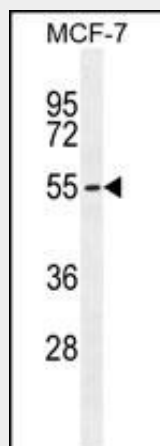
Ubiquitously expressed with highest expression in fetal tissues and adult brain, cerebellum and cerebellar vermis

PMPCA Antibody (C-term) - Protocols

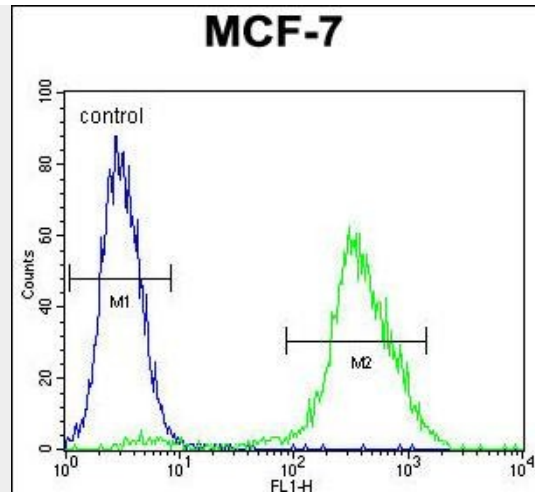
Provided below are standard protocols that you may find useful for product applications.

- [Western Blot](#)
- [Blocking Peptides](#)
- [Dot Blot](#)
- [Immunohistochemistry](#)
- [Immunofluorescence](#)
- [Immunoprecipitation](#)
- [Flow Cytometry](#)
- [Cell Culture](#)

PMPCA Antibody (C-term) - Images



PMPCA Antibody (C-term) (Cat. #AP11161b) western blot analysis in MCF-7 cell line lysates (35ug/lane). This demonstrates the PMPCA antibody detected the PMPCA protein (arrow).



PMPCA Antibody (C-term) (Cat. #AP11161b) flow cytometric analysis of MCF-7 cells (right histogram) compared to a negative control cell (left histogram). FITC-conjugated goat-anti-rabbit secondary antibodies were used for the analysis.

PMPCA Antibody (C-term) - References

- Hassel, S., et al. Proteomics 4(5):1346-1358(2004)
- Harris, R.A., et al. Proteomics 2(2):212-223(2002)
- Nagao, Y., et al. J. Biol. Chem. 275(44):34552-34556(2000)
- Simpson, J.C., et al. EMBO Rep. 1(3):287-292(2000)
- Luciano, P., et al. J. Mol. Biol. 272(2):213-225(1997)