

**INHBA Antibody (N-term)**  
**Affinity Purified Rabbit Polyclonal Antibody (Pab)**  
**Catalog # AP11126a**

**Specification**

---

**INHBA Antibody (N-term) - Product Information**

Application	IF, WB, IHC-P, FC,E
Primary Accession	<a href="#">P08476</a>
Other Accession	<a href="#">P18331</a> , <a href="#">O04998</a> , <a href="#">P07995</a> , <a href="#">NP_002183.1</a> , <a href="#">P55102</a> , <a href="#">P43032</a>
Reactivity	Human
Predicted	Bovine, Horse, Mouse, Rat, Sheep
Host	Rabbit
Clonality	Polyclonal
Isotype	Rabbit IgG
Antigen Region	85-112

**INHBA Antibody (N-term) - Additional Information**

**Gene ID** 3624

**Other Names**

Inhibin beta A chain, Activin beta-A chain, Erythroid differentiation protein, EDF, INHBA

**Target/Specificity**

This INHBA antibody is generated from rabbits immunized with a KLH conjugated synthetic peptide between 85-112 amino acids from the N-terminal region of human INHBA.

**Dilution**

IF~~1:10~50  
WB~~1:1000  
IHC-P~~1:10~50  
FC~~1:10~50

**Format**

Purified polyclonal antibody supplied in PBS with 0.09% (W/V) sodium azide. This antibody is purified through a protein A column, followed by peptide affinity purification.

**Storage**

Maintain refrigerated at 2-8°C for up to 2 weeks. For long term storage store at -20°C in small aliquots to prevent freeze-thaw cycles.

**Precautions**

INHBA Antibody (N-term) is for research use only and not for use in diagnostic or therapeutic procedures.

**INHBA Antibody (N-term) - Protein Information**

**Name** INHBA

**Function** Inhibins and activins inhibit and activate, respectively, the secretion of follitropin by the pituitary gland. Inhibins/activins are involved in regulating a number of diverse functions such as hypothalamic and pituitary hormone secretion, gonadal hormone secretion, germ cell development and maturation, erythroid differentiation, insulin secretion, nerve cell survival, embryonic axial development or bone growth, depending on their subunit composition. Inhibins appear to oppose the functions of activins.

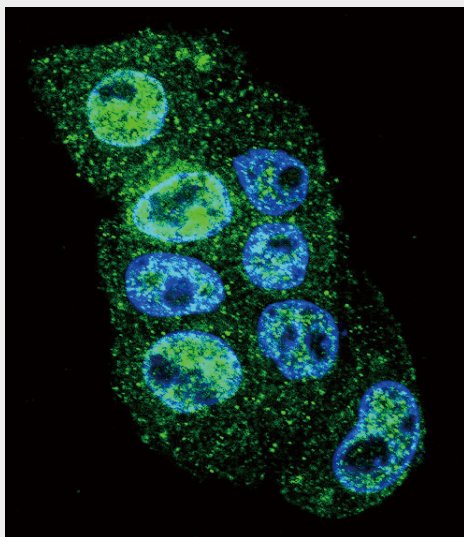
**Cellular Location**

Secreted.

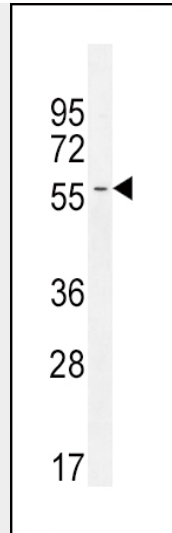
**INHBA Antibody (N-term) - Protocols**

Provided below are standard protocols that you may find useful for product applications.

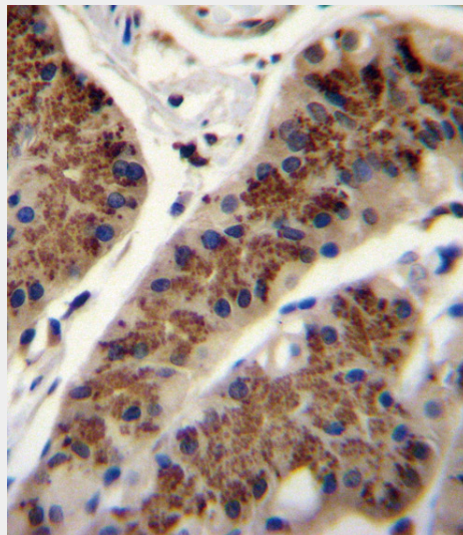
- [Western Blot](#)
- [Blocking Peptides](#)
- [Dot Blot](#)
- [Immunohistochemistry](#)
- [Immunofluorescence](#)
- [Immunoprecipitation](#)
- [Flow Cytometry](#)
- [Cell Culture](#)

**INHBA Antibody (N-term) - Images**

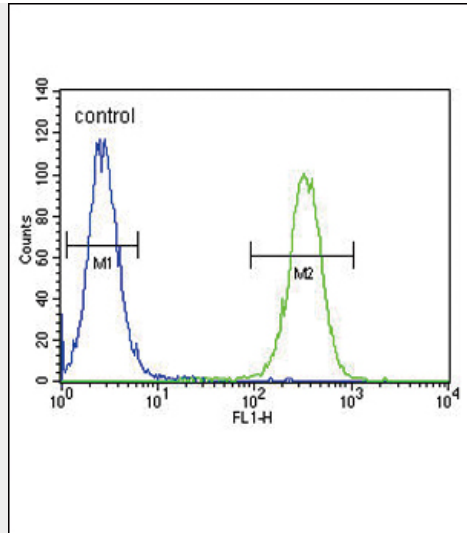
Confocal immunofluorescent analysis of INHBA Antibody (N-term)(Cat#AP11126a) with HepG2 cell followed by Alexa Fluor 488-conjugated goat anti-rabbit IgG (green). DAPI was used to stain the cell nuclear (blue).



INHBA Antibody (N-term) (Cat. #AP11126a) western blot analysis in CEM cell line lysates (35ug/lane). This demonstrates the INHBA antibody detected the INHBA protein (arrow).



INHBA Antibody (N-term) (Cat. #AP11126a) immunohistochemistry analysis in formalin fixed and paraffin embedded human stomach tissue followed by peroxidase conjugation of the secondary antibody and DAB staining. This data demonstrates the use of INHBA Antibody (N-term) for immunohistochemistry. Clinical relevance has not been evaluated.



INHBA Antibody (N-term) (Cat. #AP11126a) flow cytometric analysis of CEM cells (right histogram) compared to a negative control cell (left histogram). FITC-conjugated goat-anti-rabbit secondary antibodies were used for the analysis.

### INHBA Antibody (N-term) - Background

The inhibin beta A subunit joins the alpha subunit to form a pituitary FSH secretion inhibitor. Inhibin has been shown to regulate gonadal stromal cell proliferation negatively and to have tumor-suppressor activity. In addition, serum levels of inhibin have been shown to reflect the size of granulosa-cell tumors and can therefore be used as a marker for primary as well as recurrent disease. Because expression in gonadal and various extragonadal tissues may vary severalfold in a tissue-specific fashion, it is proposed that inhibin may be both a growth/differentiation factor and a hormone. Furthermore, the beta A subunit forms a homodimer, activin A, and also joins with a beta B subunit to form a heterodimer, activin AB, both of which stimulate FSH secretion. Finally, it has been shown that the beta A subunit mRNA is identical to the erythroid differentiation factor subunit mRNA and that only one gene for this mRNA exists in the human genome.

### INHBA Antibody (N-term) - References

- Canzian, F., et al. Hum. Mol. Genet. 19(19):3873-3884(2010)
- Shi, F.T., et al. J. Clin. Endocrinol. Metab. 95 (10), E172-E180 (2010) :
- Lascorz, J., et al. Carcinogenesis 31(9):1612-1619(2010)
- Jugessur, A., et al. PLoS ONE 5 (7), E11493 (2010) :
- Johnatty, S.E., et al. PLoS Genet. 6 (7), E1001016 (2010) :