

FUT8 Antibody (Center)
Affinity Purified Rabbit Polyclonal Antibody (Pab)
Catalog # AP11123c

Specification

FUT8 Antibody (Center) - Product Information

Application	WB, IHC-P,E
Primary Accession	O9BYC5
Other Accession	O6EV76 , P79282 , O9WTS2 , O9N0W2 , NP_835367.1 , NP_835369.1
Reactivity	Human
Predicted	Bovine, Mouse, Pig, Rat
Host	Rabbit
Clonality	Polyclonal
Isotype	Rabbit IgG
Antigen Region	329-357

FUT8 Antibody (Center) - Additional Information

Gene ID 2530

Other Names

Alpha-(1, 6)-fucosyltransferase, Alpha1-6FucT, Fucosyltransferase 8, GDP-L-Fuc:N-acetyl-beta-D-glucosaminide alpha1, 6-fucosyltransferase, GDP-fucose--glycoprotein fucosyltransferase, Glycoprotein 6-alpha-L-fucosyltransferase, FUT8

Target/Specificity

This FUT8 antibody is generated from rabbits immunized with a KLH conjugated synthetic peptide between 329-357 amino acids from the Central region of human FUT8.

Dilution

WB~~1:1000
IHC-P~~1:50~100

Format

Purified polyclonal antibody supplied in PBS with 0.09% (W/V) sodium azide. This antibody is purified through a protein A column, followed by peptide affinity purification.

Storage

Maintain refrigerated at 2-8°C for up to 2 weeks. For long term storage store at -20°C in small aliquots to prevent freeze-thaw cycles.

Precautions

FUT8 Antibody (Center) is for research use only and not for use in diagnostic or therapeutic procedures.

FUT8 Antibody (Center) - Protein Information

Name FUT8

Function Catalyzes the addition of fucose in alpha 1-6 linkage to the first GlcNAc residue, next to the peptide chains in N-glycans.

Cellular Location

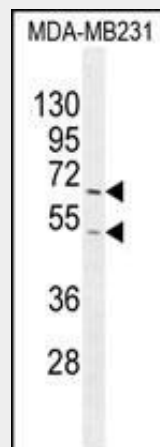
Golgi apparatus, Golgi stack membrane; Single-pass type II membrane protein
Note=Membrane-bound form in trans cisternae of Golgi.

FUT8 Antibody (Center) - Protocols

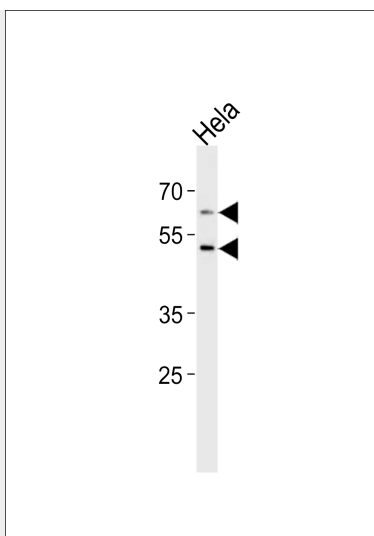
Provided below are standard protocols that you may find useful for product applications.

- [Western Blot](#)
- [Blocking Peptides](#)
- [Dot Blot](#)
- [Immunohistochemistry](#)
- [Immunofluorescence](#)
- [Immunoprecipitation](#)
- [Flow Cytometry](#)
- [Cell Culture](#)

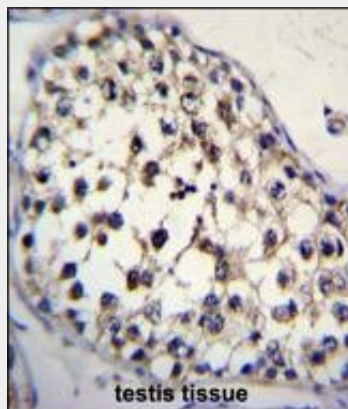
FUT8 Antibody (Center) - Images



FUT8 Antibody (Center) (Cat. #AP11123c) western blot analysis in MDA-MB231 cell line lysates (35ug/lane). This demonstrates the FUT8 antibody detected the FUT8 protein (arrow).



Western blot analysis of lysate from HeLa cell line, using FUT8 Antibody (Center)(Cat. #AP11123c). AP11123c was diluted at 1:1000 at each lane. A goat anti-rabbit IgG H&L(HRP) at 1:5000 dilution was used as the secondary antibody. Lysate at 35ug.



FUT8 Antibody (Center) (Cat. #AP11123c)immunohistochemistry analysis in formalin fixed and paraffin embedded human testis tissue followed by peroxidase conjugation of the secondary antibody and DAB staining.This data demonstrates the use of FUT8 Antibody (Center) for immunohistochemistry. Clinical relevance has not been evaluated.

FUT8 Antibody (Center) - Background

This enzyme belongs to the family of fucosyltransferases. The product of this gene catalyzes the transfer of fucose from GDP-fucose to N-linked type complex glycopeptides. This enzyme is distinct from other fucosyltransferases which catalyze alpha1-2, alpha1-3, and alpha1-4 fucose addition. The expression of this gene may contribute to the malignancy of cancer cells and to their invasive and metastatic capabilities. Alternatively spliced variants encoding different isoforms have been identified.

FUT8 Antibody (Center) - References

Rose, J. Phd, et al. Mol. Med. (2010) In press :
Wang, X., et al. J. Biochem. 145(5):643-651(2009)
Kudo, T., et al. Mol. Cancer 6, 32 (2007) :
Ihara, H., et al. Glycobiology 16(4):333-342(2006)

Ito, Y., et al. Cancer Lett. 200(2):167-172(2003)