

**CAF-1 Antibody (N-term)**  
**Affinity Purified Rabbit Polyclonal Antibody (Pab)**  
**Catalog # AP11112a**

**Specification**

---

**CAF-1 Antibody (N-term) - Product Information**

Application	IF, WB, IHC-P,E
Primary Accession	<a href="#">O9UIV1</a>
Other Accession	<a href="#">O3KQ85</a> , <a href="#">O60809</a> , <a href="#">O08BM8</a> , <a href="#">O5ZJV9</a> , <a href="#">O3ZC01</a> , <a href="#">NP_473367.2</a>
Reactivity	Human
Predicted	Bovine, Chicken, Zebrafish, Mouse, Xenopus
Host	Rabbit
Clonality	Polyclonal
Isotype	Rabbit IgG
Calculated MW	32745
Antigen Region	34-61

**CAF-1 Antibody (N-term) - Additional Information**

**Gene ID** 29883

**Other Names**

CCR4-NOT transcription complex subunit 7, BTG1-binding factor 1, CCR4-associated factor 1, CAF-1, Caf1a, CNOT7, CAF1

**Target/Specificity**

This CAF-1 antibody is generated from rabbits immunized with a KLH conjugated synthetic peptide between 34-61 amino acids from the N-terminal region of human CAF-1.

**Dilution**

IF~~1:10~50  
WB~~1:1000  
IHC-P~~1:50~100

**Format**

Purified polyclonal antibody supplied in PBS with 0.09% (W/V) sodium azide. This antibody is purified through a protein A column, followed by peptide affinity purification.

**Storage**

Maintain refrigerated at 2-8°C for up to 2 weeks. For long term storage store at -20°C in small aliquots to prevent freeze-thaw cycles.

**Precautions**

CAF-1 Antibody (N-term) is for research use only and not for use in diagnostic or therapeutic procedures.

**CAF-1 Antibody (N-term) - Protein Information**

**Name** CNOT7

**Synonyms** CAF1

**Function** Has 3'-5' poly(A) exoribonuclease activity for synthetic poly(A) RNA substrate (PubMed:[19276069](#), PubMed:[20634287](#), PubMed:[31439799](#)). Its function seems to be partially redundant with that of CNOT8 (PubMed:[19605561](#)). Catalytic component of the CCR4-NOT complex which is one of the major cellular mRNA deadenylases and is linked to various cellular processes including bulk mRNA degradation, miRNA-mediated repression, translational repression during translational initiation and general transcription regulation (PubMed:[19276069](#), PubMed:[20634287](#), PubMed:[31439799](#)). During miRNA-mediated repression the complex seems also to act as translational repressor during translational initiation (PubMed:[20065043](#)). Additional complex functions may be a consequence of its influence on mRNA expression (PubMed:[19276069](#), PubMed:[23236473](#)). Associates with members of the BTG family such as TOB1 and BTG2 and is required for their anti-proliferative activity (PubMed:[19276069](#), PubMed:[23236473](#)).

**Cellular Location**

Nucleus. Cytoplasm, P-body {ECO:0000250|UniProtKB:Q60809}. Cytoplasm, Cytoplasmic ribonucleoprotein granule. Note=NANOS2 promotes its localization to P-body (By similarity). Recruited to cytoplasmic ribonucleoprotein membraneless compartments by CAPRIN1, promoting deadenylation of mRNAs (PubMed:31439799) {ECO:0000250|UniProtKB:Q60809, ECO:0000269|PubMed:31439799}

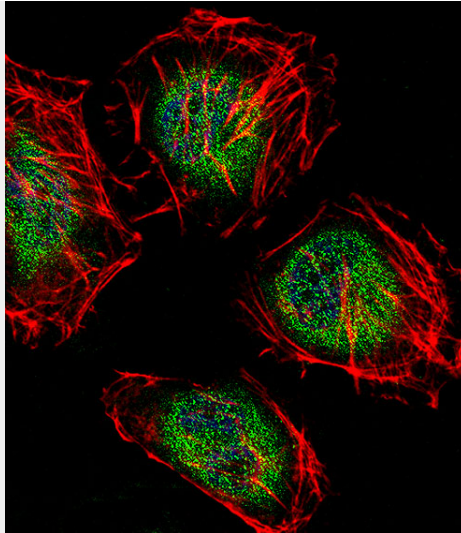
**CAF-1 Antibody (N-term) - Protocols**

Provided below are standard protocols that you may find useful for product applications.

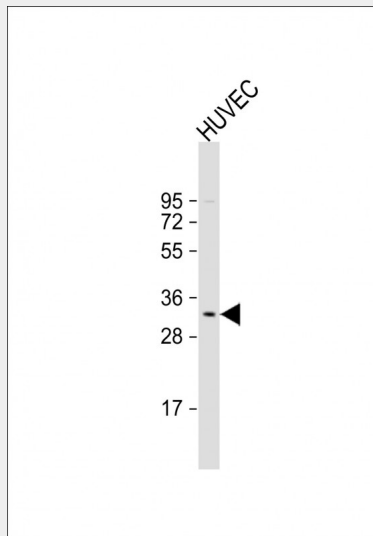
- [Western Blot](#)
- [Blocking Peptides](#)
- [Dot Blot](#)
- [Immunohistochemistry](#)
- [Immunofluorescence](#)
- [Immunoprecipitation](#)
- [Flow Cytometry](#)
- [Cell Culture](#)

**CAF-1 Antibody (N-term) - Images**

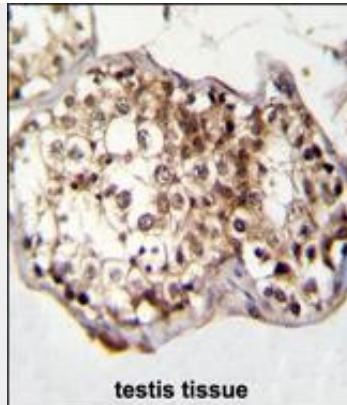




Fluorescent confocal image of HeLa cell stained with CAF-1 Antibody (N-term)(Cat#AP11112a).HeLa cells were fixed with 4% PFA (20 min), permeabilized with Triton X-100 (0.1%, 10 min), then incubated with CAF-1 primary antibody (1:25, 1 h at 37°C). For secondary antibody, Alexa Fluor® 488 conjugated donkey anti-rabbit antibody (green) was used (1:400, 50 min at 37°C).Cytoplasmic actin was counterstained with Alexa Fluor® 555 (red) conjugated Phalloidin (7units/ml, 1 h at 37°C). Nuclei were counterstained with DAPI (blue) (10 µg/ml, 10 min). CAF-1 immunoreactivity is localized to Cytoplasm and Nucleus significantly.



Anti-CAF-1 Antibody (N-term) at 1:1000 dilution + HUVEC whole cell lysate Lysates/proteins at 20 µg per lane. Secondary Goat Anti-Rabbit IgG, (H+L), Peroxidase conjugated at 1/10000 dilution. Predicted band size : 33 kDa Blocking/Dilution buffer: 5% NFDm/TBST.



CAF-1 Antibody (N-term) (Cat. #AP11112a) immunohistochemistry analysis in formalin fixed and paraffin embedded human testis tissue followed by peroxidase conjugation of the secondary antibody and DAB staining. This data demonstrates the use of CAF-1 Antibody (N-term) for immunohistochemistry. Clinical relevance has not been evaluated.

#### **CAF-1 Antibody (N-term) - Background**

The protein encoded by this gene binds to an anti-proliferative protein, B-cell translocation protein 1, which negatively regulates cell proliferation. Binding of the two proteins, which is driven by phosphorylation of the anti-proliferative protein, causes signaling events in cell division that lead to changes in cell proliferation associated with cell-cell contact. The protein has both mouse and yeast orthologs. Alternate splicing of this gene results in two transcript variants encoding different isoforms.

#### **CAF-1 Antibody (N-term) - References**

- Lau, N.C., et al. *Biochem. J.* 422(3):443-453(2009)
- Aslam, A., et al. *Mol. Biol. Cell* 20(17):3840-3850(2009)
- Miyasaka, T., et al. *Cancer Sci.* 99(4):755-761(2008)
- Nishida, K., et al. *Acta Crystallogr. Sect. F Struct. Biol. Cryst. Commun.* 63 (PT 12), 1061-1063 (2007) :
- Robin-Lespinnasse, Y., et al. *J. Cell. Sci.* 120 (PT 4), 638-647 (2007) :