

**FGD6 Antibody (C-term)**  
**Affinity Purified Rabbit Polyclonal Antibody (Pab)**  
**Catalog # AP11108b****Specification**

---

**FGD6 Antibody (C-term) - Product Information**

Application	<b>WB, IHC-P,E</b>
Primary Accession	<a href="#">O6ZV73</a>
Other Accession	<a href="#">NP_060821.3</a>
Reactivity	<b>Human</b>
Host	<b>Rabbit</b>
Clonality	<b>Polyclonal</b>
Isotype	<b>Rabbit IgG</b>
Antigen Region	<b>1324-1352</b>

**FGD6 Antibody (C-term) - Additional Information****Gene ID** 55785**Other Names**

FYVE, RhoGEF and PH domain-containing protein 6, Zinc finger FYVE domain-containing protein 24, FGD6, KIAA1362, ZFYVE24

**Target/Specificity**

This FGD6 antibody is generated from rabbits immunized with a KLH conjugated synthetic peptide between 1324-1352 amino acids from the C-terminal region of human FGD6.

**Dilution**WB~~1:1000  
IHC-P~~1:10~50**Format**

Purified polyclonal antibody supplied in PBS with 0.09% (W/V) sodium azide. This antibody is purified through a protein A column, followed by peptide affinity purification.

**Storage**

Maintain refrigerated at 2-8°C for up to 2 weeks. For long term storage store at -20°C in small aliquots to prevent freeze-thaw cycles.

**Precautions**

FGD6 Antibody (C-term) is for research use only and not for use in diagnostic or therapeutic procedures.

**FGD6 Antibody (C-term) - Protein Information****Name** FGD6**Synonyms** KIAA1362, ZFYVE24

**Function** May activate CDC42, a member of the Ras-like family of Rho- and Rac proteins, by exchanging bound GDP for free GTP. May play a role in regulating the actin cytoskeleton and cell shape (By similarity).

**Cellular Location**

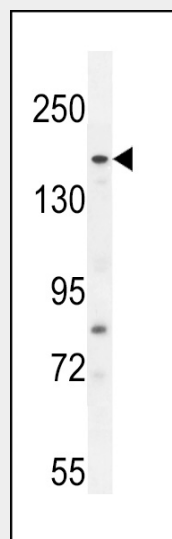
Cytoplasm. Cytoplasm, cytoskeleton

**FGD6 Antibody (C-term) - Protocols**

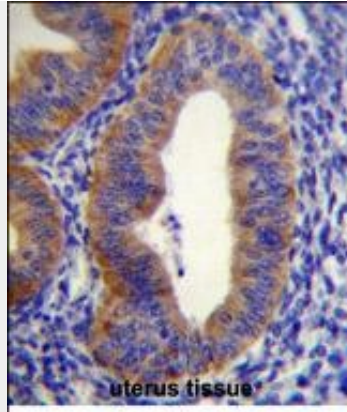
Provided below are standard protocols that you may find useful for product applications.

- [Western Blot](#)
- [Blocking Peptides](#)
- [Dot Blot](#)
- [Immunohistochemistry](#)
- [Immunofluorescence](#)
- [Immunoprecipitation](#)
- [Flow Cytometry](#)
- [Cell Culture](#)

**FGD6 Antibody (C-term) - Images**



FGD6 Antibody (C-term) (Cat. #AP11108b) western blot analysis in A549 cell line lysates (35ug/lane). This demonstrates the FGD6 antibody detected the FGD6 protein (arrow).



FGD6 Antibody (C-term) (Cat. #AP11108b) immunohistochemistry analysis in formalin fixed and paraffin embedded human uterus tissue followed by peroxidase conjugation of the secondary antibody and DAB staining. This data demonstrates the use of FGD6 Antibody (C-term) for immunohistochemistry. Clinical relevance has not been evaluated.

#### **FGD6 Antibody (C-term) - Background**

Component of clathrin-coated pits and vesicles, that may link the endocytic machinery to the actin cytoskeleton. Binds 3-phosphoinositides (via ENTH domain). May act through the ENTH domain to promote cell survival by stabilizing receptor tyrosine kinases following ligand-induced endocytosis.

#### **FGD6 Antibody (C-term) - References**

Barrios-Rodiles, M., et al. Science 307(5715):1621-1625(2005)

Jin, J., et al. Curr. Biol. 14(16):1436-1450(2004)