

**CCNB1 Antibody (Center)**  
**Purified Rabbit Polyclonal Antibody (Pab)**  
**Catalog # AP11096c****Specification**

---

**CCNB1 Antibody (Center) - Product Information**

Application	<b>WB, IHC-P,E</b>
Primary Accession	<a href="#">P14635</a>
Other Accession	<a href="#">P30277</a> , <a href="#">P24860</a> , <a href="#">Q08301</a> , <a href="#">Q1LZG6</a> , <a href="#">NP_114172.1</a>
Reactivity	<b>Human</b>
Predicted	<b>Bovine, Hamster, Mouse, Rat</b>
Host	<b>Rabbit</b>
Clonality	<b>Polyclonal</b>
Isotype	<b>Rabbit IgG</b>
Antigen Region	<b>241-268</b>

**CCNB1 Antibody (Center) - Additional Information****Gene ID** 891**Other Names**

G2/mitotic-specific cyclin-B1, CCNB1, CCNB

**Target/Specificity**

This CCNB1 antibody is generated from rabbits immunized with a KLH conjugated synthetic peptide between 241-268 amino acids from the Central region of human CCNB1.

**Dilution**WB~~1:1000  
IHC-P~~1:50~100**Format**

Purified polyclonal antibody supplied in PBS with 0.09% (W/V) sodium azide. This antibody is prepared by Saturated Ammonium Sulfate (SAS) precipitation followed by dialysis against PBS.

**Storage**

Maintain refrigerated at 2-8°C for up to 2 weeks. For long term storage store at -20°C in small aliquots to prevent freeze-thaw cycles.

**Precautions**

CCNB1 Antibody (Center) is for research use only and not for use in diagnostic or therapeutic procedures.

**CCNB1 Antibody (Center) - Protein Information****Name** CCNB1

## Synonyms CCNB

**Function** Essential for the control of the cell cycle at the G2/M (mitosis) transition.

## Cellular Location

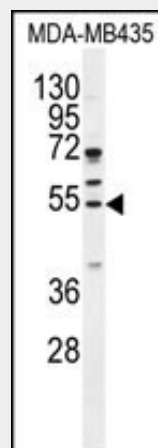
Cytoplasm. Nucleus. Cytoplasm, cytoskeleton, microtubule organizing center, centrosome

## CCNB1 Antibody (Center) - Protocols

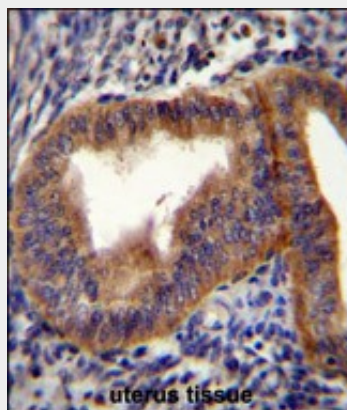
Provided below are standard protocols that you may find useful for product applications.

- [Western Blot](#)
- [Blocking Peptides](#)
- [Dot Blot](#)
- [Immunohistochemistry](#)
- [Immunofluorescence](#)
- [Immunoprecipitation](#)
- [Flow Cytometry](#)
- [Cell Culture](#)

## CCNB1 Antibody (Center) - Images



CCNB1 Antibody (Center) (Cat. #AP11096c) western blot analysis in MDA-MB435 cell line lysates (35ug/lane). This demonstrates the CCNB1 antibody detected the CCNB1 protein (arrow).



CCNB1 Antibody (Center) (Cat. #AP11096c) immunohistochemistry analysis in formalin fixed and

paraffin embedded human uterus tissue followed by peroxidase conjugation of the secondary antibody and DAB staining. This data demonstrates the use of CCNB1 Antibody (Center) for immunohistochemistry. Clinical relevance has not been evaluated.

### **CCNB1 Antibody (Center) - Background**

The protein encoded by this gene is a regulatory protein involved in mitosis. The gene product complexes with p34(cdc2) to form the maturation-promoting factor (MPF). Two alternative transcripts have been found, a constitutively expressed transcript and a cell cycle-regulated transcript, that is expressed predominantly during G2/M phase. The different transcripts result from the use of alternate transcription initiation sites. [provided by RefSeq].

### **CCNB1 Antibody (Center) - References**

Kreis, N.N., et al. *Oncogene* 29(41):5591-5603(2010)  
van Zon, W., et al. *J. Cell Biol.* 190(4):587-602(2010)  
Harley, M.E., et al. *EMBO J.* 29(14):2407-2420(2010)  
Olson, J.E., et al. *Breast Cancer Res. Treat.* (2010) In press :  
Nantajit, D., et al. *PLoS ONE* 5 (8), E12341 (2010) :

#### **CCNB1 Antibody (Center) - Citations**

- [HNF4 \$\alpha\$  is a therapeutic target that links AMPK to WNT signalling in early-stage gastric cancer.](#)