

**CLEC11A Antibody (Center)**  
**Affinity Purified Rabbit Polyclonal Antibody (Pab)**  
**Catalog # AP11087C**

**Specification**

---

**CLEC11A Antibody (Center) - Product Information**

Application	WB, IHC-P, FC,E
Primary Accession	<a href="#">O9Y240</a>
Other Accession	<a href="#">NP_002966.1</a>
Reactivity	Human
Host	Rabbit
Clonality	Polyclonal
Isotype	Rabbit IgG
Calculated MW	35695
Antigen Region	145-174

**CLEC11A Antibody (Center) - Additional Information**

**Gene ID** 6320

**Other Names**

C-type lectin domain family 11 member A, C-type lectin superfamily member 3, Lymphocyte secreted C-type lectin, Stem cell growth factor, p47, CLEC11A, CLECSF3, LSLCL, SCGF

**Target/Specificity**

This CLEC11A antibody is generated from rabbits immunized with a KLH conjugated synthetic peptide between 145-174 amino acids from the Central region of human CLEC11A.

**Dilution**

WB~~1:1000  
IHC-P~~1:50~100  
FC~~1:10~50

**Format**

Purified polyclonal antibody supplied in PBS with 0.09% (W/V) sodium azide. This antibody is purified through a protein A column, followed by peptide affinity purification.

**Storage**

Maintain refrigerated at 2-8°C for up to 2 weeks. For long term storage store at -20°C in small aliquots to prevent freeze-thaw cycles.

**Precautions**

CLEC11A Antibody (Center) is for research use only and not for use in diagnostic or therapeutic procedures.

**CLEC11A Antibody (Center) - Protein Information**

**Name** CLEC11A

**Synonyms** CLECSF3, LSLCL, SCGF

**Function** Promotes osteogenesis by stimulating the differentiation of mesenchymal progenitors into mature osteoblasts (PubMed:[27976999](#)). Important for repair and maintenance of adult bone (By similarity).

**Cellular Location**

Cytoplasm. Secreted

**Tissue Location**

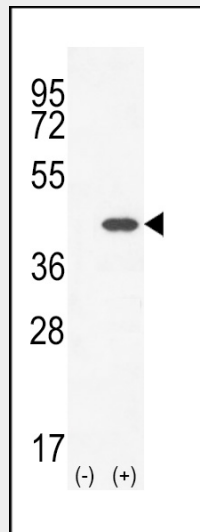
Expressed in skeletal tissues including bone marrow, chondrocytes, primary ossification center-associated cells, the perichondrium and periosteum. Lower levels of expression were detected in spleen, thymus, appendix and fetal liver

**CLEC11A Antibody (Center) - Protocols**

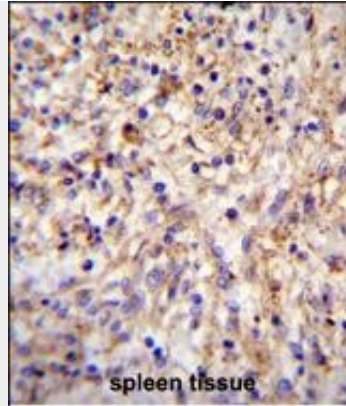
Provided below are standard protocols that you may find useful for product applications.

- [Western Blot](#)
- [Blocking Peptides](#)
- [Dot Blot](#)
- [Immunohistochemistry](#)
- [Immunofluorescence](#)
- [Immunoprecipitation](#)
- [Flow Cytometry](#)
- [Cell Culture](#)

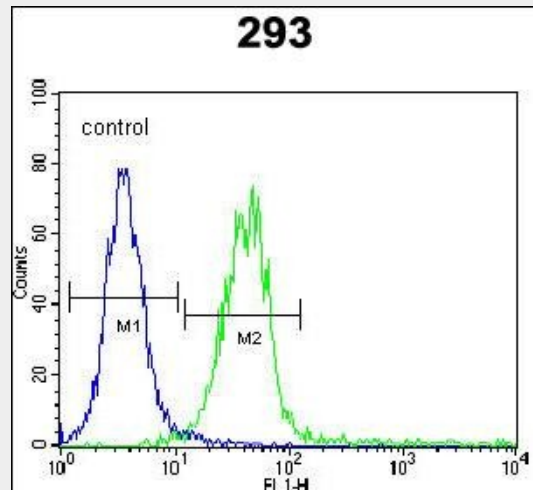
**CLEC11A Antibody (Center) - Images**



Western blot analysis of CLEC11A (arrow) using rabbit polyclonal CLEC11A Antibody (Center) (Cat. #AP11087c). 293 cell lysates (2 ug/lane) either nontransfected (Lane 1) or transiently transfected (Lane 2) with the CLEC11A gene.



CLEC11A Antibody (Center) (Cat. #AP11087c) immunohistochemistry analysis in formalin fixed and paraffin embedded human spleen tissue followed by peroxidase conjugation of the secondary antibody and DAB staining. This data demonstrates the use of CLEC11A Antibody (Center) for immunohistochemistry. Clinical relevance has not been evaluated.



CLEC11A Antibody (Center) (Cat. #AP11087c) flow cytometric analysis of 293 cells (right histogram) compared to a negative control cell (left histogram). FITC-conjugated goat-anti-rabbit secondary antibodies were used for the analysis.

**CLEC11A Antibody (Center) - Background**

This gene encodes a member of the C-type lectin superfamily. The encoded protein is a secreted sulfated glycoprotein and functions as a growth factor for primitive hematopoietic progenitor cells. An alternative splice variant has been described but its biological nature has not been determined.

**CLEC11A Antibody (Center) - References**

Ouma, C., et al. *Infect. Immun.* 78(1):453-460(2010)  
 Keller, C.C., et al. *Infect. Immun.* 77(9):3864-3871(2009)  
 Lan, C.C., et al. *Br. J. Dermatol.* 160(6):1180-1187(2009)  
 Lamesch, P., et al. *Genomics* 89(3):307-315(2007)  
 Hollenbeck, S.T., et al. *J. Surg. Res.* 120(2):288-294(2004)

**CLEC11A Antibody (Center) - Citations**

- [Genetic Analysis of Giant Cell Lesions of the Maxillofacial and Axial/Appendicular Skeletons.](#)