

His6-DEP-1 Antibody
Purified Rabbit Polyclonal Antibody (Pab)
Catalog # AP11085A

Specification

His6-DEP-1 Antibody - Product Information

Application	IF, WB, IHC-P,E
Primary Accession	O12913
Other Accession	NP_002834.3
Reactivity	Human
Host	Rabbit
Clonality	Polyclonal
Isotype	Rabbit IgG
Antigen Region	Whole Length of Recombinant DEP-1Protein

His6-DEP-1 Antibody - Additional Information

Gene ID 5795

Other Names

Receptor-type tyrosine-protein phosphatase eta, Protein-tyrosine phosphatase eta, R-PTP-eta, Density-enhanced phosphatase 1, DEP-1, HPTP eta, Protein-tyrosine phosphatase receptor type J, R-PTP-J, CD148, PTPRJ, DEP1

Target/Specificity

Poly-HIS protein were used to produced this antibody.

Dilution

IF~~1:10~50
WB~~1:1000
IHC-P~~1:10~50

Format

Purified monoclonal antibody supplied in PBS with 0.09% (W/V) sodium azide. This antibody is purified through a protein A column, followed by dialysis against PBS.

Storage

Maintain refrigerated at 2-8°C for up to 2 weeks. For long term storage store at -20°C in small aliquots to prevent freeze-thaw cycles.

Precautions

His6-DEP-1 Antibody is for research use only and not for use in diagnostic or therapeutic procedures.

His6-DEP-1 Antibody - Protein Information

Name PTPRJ

Synonyms DEP1

Function Tyrosine phosphatase which dephosphorylates or contributes to the dephosphorylation of CTNND1, FLT3, PDGFRB, MET, KDR, LYN, SRC, MAPK1, MAPK3, EGFR, TJP1, OCLN, PIK3R1 and PIK3R2 (PubMed:[10821867](#), PubMed:[12062403](#), PubMed:[12370829](#), PubMed:[12475979](#), PubMed:[18348712](#), PubMed:[19494114](#), PubMed:[19922411](#), PubMed:[21262971](#)). Plays a role in cell adhesion, migration, proliferation and differentiation (PubMed:[12370829](#), PubMed:[14709717](#), PubMed:[16682945](#), PubMed:[19836242](#)). Has a role in megakaryocytes and platelet formation (PubMed:[30591527](#)). Involved in vascular development (By similarity). Regulator of macrophage adhesion and spreading (By similarity). Positively affects cell-matrix adhesion (By similarity). Positive regulator of platelet activation and thrombosis. Negative regulator of cell proliferation (PubMed:[16682945](#)). Negative regulator of PDGF-stimulated cell migration; through dephosphorylation of PDGFR (PubMed:[21091576](#)). Positive regulator of endothelial cell survival, as well as of VEGF- induced SRC and AKT activation; through KDR dephosphorylation (PubMed:[18936167](#)). Negative regulator of EGFR signaling pathway; through EGFR dephosphorylation (PubMed:[19836242](#)). Enhances the barrier function of epithelial junctions during reassembly (PubMed:[19332538](#)). Negatively regulates T-cell receptor (TCR) signaling (PubMed:[11259588](#), PubMed:[9531590](#), PubMed:[9780142](#)). Upon T-cell TCR activation, it is up-regulated and excluded from the immunological synapses, while upon T- cell-antigen presenting cells (APC) disengagement, it is no longer excluded and can dephosphorylate PLCG1 and LAT to down-regulate prolongation of signaling (PubMed:[11259588](#), PubMed:[12913111](#)).

Cellular Location

Cell membrane; Single-pass type I membrane protein. Cell projection, ruffle membrane. Cell junction Note=After T-cell stimulation, it is temporarily excluded from immunological synapses

Tissue Location

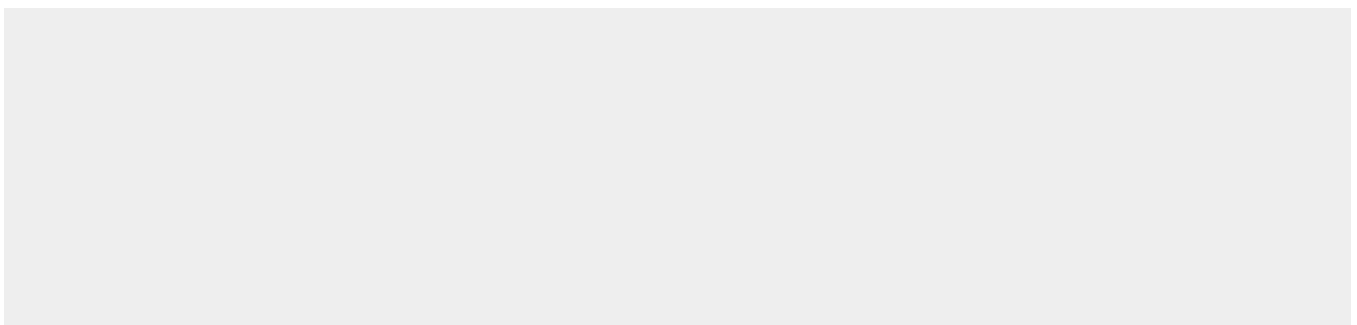
Expressed in the promyelocytic cell line HL-60, the granulocyte-macrophage colony-stimulating factor-dependent leukemic cell line F-36P, and the IL3 and erythropoietin-dependent leukemic cell line F-36E. Expressed predominantly in epithelial cells and lymphocytes. Enhanced expression at high cell density

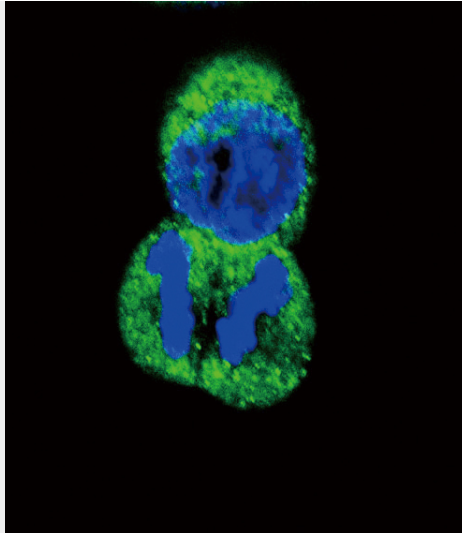
His6-DEP-1 Antibody - Protocols

Provided below are standard protocols that you may find useful for product applications.

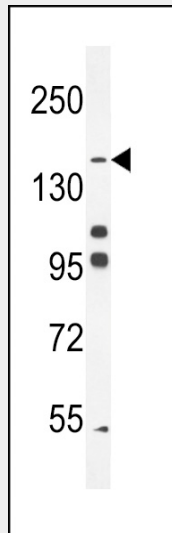
- [Western Blot](#)
- [Blocking Peptides](#)
- [Dot Blot](#)
- [Immunohistochemistry](#)
- [Immunofluorescence](#)
- [Immunoprecipitation](#)
- [Flow Cytometry](#)
- [Cell Culture](#)

His6-DEP-1 Antibody - Images

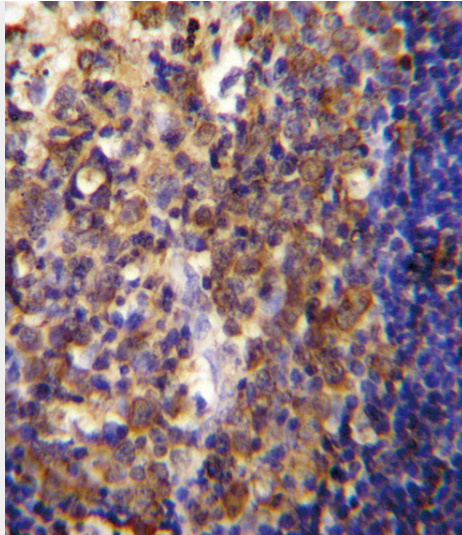




Confocal immunofluorescent analysis of His6-DEP-1 Antibody (Cat. #AP11085a) with HeLa cell followed by Alexa Fluor[®]488-conjugated goat anti-rabbit IgG (green). DAPI was used to stain the cell nuclear (blue).



His6-DEP-1 (Cat. #AP11085a) western blot analysis in K562 cell line lysates (35ug/lane). This demonstrates the DEP-1 antibody detected the DEP-1 protein (arrow).



His6-DEP-1 Antibody (Cat. #AP11085a) immunohistochemistry analysis in formalin fixed and paraffin embedded human tonsil tissue followed by peroxidase conjugation of the secondary antibody and DAB staining. This data demonstrates the use of His6-DEP-1 Antibody for immunohistochemistry. Clinical relevance has not been evaluated.

His6-DEP-1 Antibody - Background

May contribute to the mechanism of contact inhibition of cell growth.