

BCL7A Antibody (N-term)
Affinity Purified Rabbit Polyclonal Antibody (Pab)
Catalog # AP10984a**Specification**

BCL7A Antibody (N-term) - Product Information

Application	WB,E
Primary Accession	O4VC05
Other Accession	O5XH61 , O9CXE2 , O5XFY4 , NP_001019979.1 , NP_066273.1
Reactivity	Human
Predicted	Zebrafish, Mouse, Xenopus
Host	Rabbit
Clonality	Polyclonal
Isotype	Rabbit IgG
Calculated MW	22810
Antigen Region	1-30

BCL7A Antibody (N-term) - Additional Information**Gene ID** 605**Other Names**

B-cell CLL/lymphoma 7 protein family member A, BCL7A

Target/Specificity

This BCL7A antibody is generated from rabbits immunized with a KLH conjugated synthetic peptide between 1-30 amino acids from the N-terminal region of human BCL7A.

Dilution

WB~~1:1000

Format

Purified polyclonal antibody supplied in PBS with 0.09% (W/V) sodium azide. This antibody is purified through a protein A column, followed by peptide affinity purification.

Storage

Maintain refrigerated at 2-8°C for up to 2 weeks. For long term storage store at -20°C in small aliquots to prevent freeze-thaw cycles.

Precautions

BCL7A Antibody (N-term) is for research use only and not for use in diagnostic or therapeutic procedures.

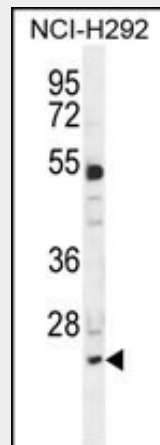
BCL7A Antibody (N-term) - Protein Information**Name** BCL7A

BCL7A Antibody (N-term) - Protocols

Provided below are standard protocols that you may find useful for product applications.

- [Western Blot](#)
- [Blocking Peptides](#)
- [Dot Blot](#)
- [Immunohistochemistry](#)
- [Immunofluorescence](#)
- [Immunoprecipitation](#)
- [Flow Cytometry](#)
- [Cell Culture](#)

BCL7A Antibody (N-term) - Images



BCL7A Antibody (N-term) (Cat. #AP10984a) western blot analysis in NCI-H292 cell line lysates (35ug/lane). This demonstrates the BCL7A antibody detected the BCL7A protein (arrow).

BCL7A Antibody (N-term) - Background

This gene is directly involved, with Myc and IgH, in a three-way gene translocation in a Burkitt lymphoma cell line. As a result of the gene translocation, the N-terminal region of the gene product is disrupted, which is thought to be related to the pathogenesis of a subset of high-grade B cell non-Hodgkin lymphoma. The N-terminal segment involved in the translocation includes the region that shares a strong sequence similarity with those of BCL7B and BCL7C. Two transcript variants encoding different isoforms have been found for this gene.

BCL7A Antibody (N-term) - References

- Hosgood, H.D. III, et al. *Occup Environ Med* 66(12):848-853(2009)
Liang, X.S., et al. *Br. J. Haematol.* 146(4):418-423(2009)
Morton, L.M., et al. *Cancer Epidemiol. Biomarkers Prev.* 18(4):1259-1270(2009)
Carbone, A., et al. *Genes Chromosomes Cancer* 47(12):1067-1075(2008)
Matsuoka, S., et al. *Science* 316(5828):1160-1166(2007)