

**CTBP1 Antibody (C-term)**  
**Affinity Purified Rabbit Polyclonal Antibody (Pab)**  
**Catalog # AP10926b**

**Specification**

---

**CTBP1 Antibody (C-term) - Product Information**

Application	WB,E
Primary Accession	<a href="#">O13363</a>
Other Accession	<a href="#">NP_001319.1</a>
Reactivity	Human, Mouse
Host	Rabbit
Clonality	Polyclonal
Isotype	Rabbit IgG
Calculated MW	47535
Antigen Region	409-438

**CTBP1 Antibody (C-term) - Additional Information**

**Gene ID** 1487

**Other Names**

C-terminal-binding protein 1, CtBP1, 111-, CTBP1, CTBP

**Target/Specificity**

This CTBP1 antibody is generated from rabbits immunized with a KLH conjugated synthetic peptide between 409-438 amino acids from the C-terminal region of human CTBP1.

**Dilution**

WB~~1:2000

**Format**

Purified polyclonal antibody supplied in PBS with 0.09% (W/V) sodium azide. This antibody is purified through a protein A column, followed by peptide affinity purification.

**Storage**

Maintain refrigerated at 2-8°C for up to 2 weeks. For long term storage store at -20°C in small aliquots to prevent freeze-thaw cycles.

**Precautions**

CTBP1 Antibody (C-term) is for research use only and not for use in diagnostic or therapeutic procedures.

**CTBP1 Antibody (C-term) - Protein Information**

**Name** CTBP1

**Synonyms** CTBP

**Function** Corepressor targeting diverse transcription regulators such as GLIS2 or BCL6. Has dehydrogenase activity. Involved in controlling the equilibrium between tubular and stacked structures in the Golgi complex. Functions in brown adipose tissue (BAT) differentiation.

**Cellular Location**

Cytoplasm. Nucleus

**Tissue Location**

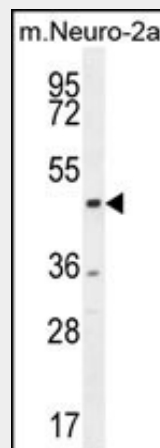
Expressed in germinal center B-cells.

**CTBP1 Antibody (C-term) - Protocols**

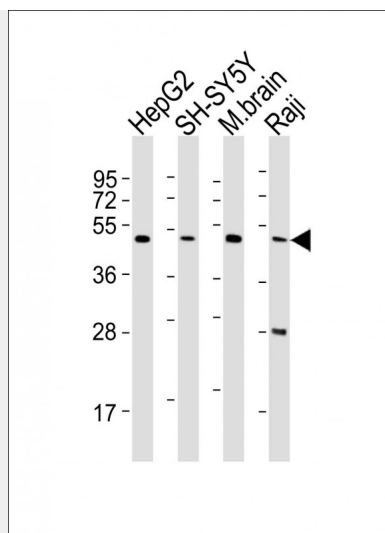
Provided below are standard protocols that you may find useful for product applications.

- [Western Blot](#)
- [Blocking Peptides](#)
- [Dot Blot](#)
- [Immunohistochemistry](#)
- [Immunofluorescence](#)
- [Immunoprecipitation](#)
- [Flow Cytometry](#)
- [Cell Culture](#)

**CTBP1 Antibody (C-term) - Images**



CTBP1 Antibody (C-term) (Cat. #AP10926b) western blot analysis in mouse Neuro-2a cell line lysates (35ug/lane). This demonstrates the CTBP1 antibody detected the CTBP1 protein (arrow).



All lanes : Anti-CTBP1 Antibody (C-term) at 1:2000 dilution Lane 1: HepG2 whole cell lysates Lane 2: SH-SY5Y whole cell lysates Lane 3: mouse brain lysates Lane 4: Raji whole cell lysates Lysates/proteins at 20 µg per lane. Secondary Goat Anti-Rabbit IgG, (H+L), Peroxidase conjugated at 1/10000 dilution Predicted band size : 48 kDa Blocking/Dilution buffer: 5% NFDM/TBST.

### CTBP1 Antibody (C-term) - Background

This gene encodes a protein that binds to the C-terminus of adenovirus E1A proteins. This phosphoprotein is a transcriptional repressor and may play a role during cellular proliferation. This protein and the product of a second closely related gene, CTBP2, can dimerize. Both proteins can also interact with a polycomb group protein complex which participates in regulation of gene expression during development. Alternative splicing of transcripts from this gene results in multiple transcript variants.

### CTBP1 Antibody (C-term) - References

- Roukens, M.G., et al. *Nat. Cell Biol.* 12(10):933-942(2010)
- Choi, H.J., et al. *Biochem. Biophys. Res. Commun.* 400(3):396-402(2010)
- Merrill, J.C., et al. *J. Mol. Biol.* 398(5):657-671(2010)
- Davila, S., et al. *Genes Immun.* 11(3):232-238(2010)
- Yoshida, T., et al. *Int. J. Mol. Med.* 25(4):649-656(2010)