

AMAC1L2 Antibody (N-term)
Affinity Purified Rabbit Polyclonal Antibody (Pab)
Catalog # AP10893a

Specification

AMAC1L2 Antibody (N-term) - Product Information

Application	WB, FC,E
Primary Accession	O96KT7
Other Accession	P0C7O5 , NP_473369.1
Reactivity	Human
Host	Rabbit
Clonality	Polyclonal
Isotype	Rabbit IgG
Calculated MW	35161
Antigen Region	1-30

AMAC1L2 Antibody (N-term) - Additional Information

Gene ID 83650

Other Names

Solute carrier family 35 member G5, Acyl-malonyl-condensing enzyme 1-like protein 2, SLC35G5, AMAC, AMAC1L2

Target/Specificity

This AMAC1L2 antibody is generated from rabbits immunized with a KLH conjugated synthetic peptide between 1-30 amino acids from the N-terminal region of human AMAC1L2.

Dilution

WB~~1:1000
FC~~1:10~50

Format

Purified polyclonal antibody supplied in PBS with 0.09% (W/V) sodium azide. This antibody is purified through a protein A column, followed by peptide affinity purification.

Storage

Maintain refrigerated at 2-8°C for up to 2 weeks. For long term storage store at -20°C in small aliquots to prevent freeze-thaw cycles.

Precautions

AMAC1L2 Antibody (N-term) is for research use only and not for use in diagnostic or therapeutic procedures.

AMAC1L2 Antibody (N-term) - Protein Information

Name SLC35G5

Synonyms AMAC, AMAC1L2

Cellular Location

Membrane; Multi-pass membrane protein

Tissue Location

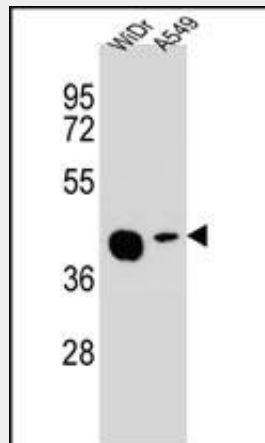
Expressed in placenta and testis.

AMAC1L2 Antibody (N-term) - Protocols

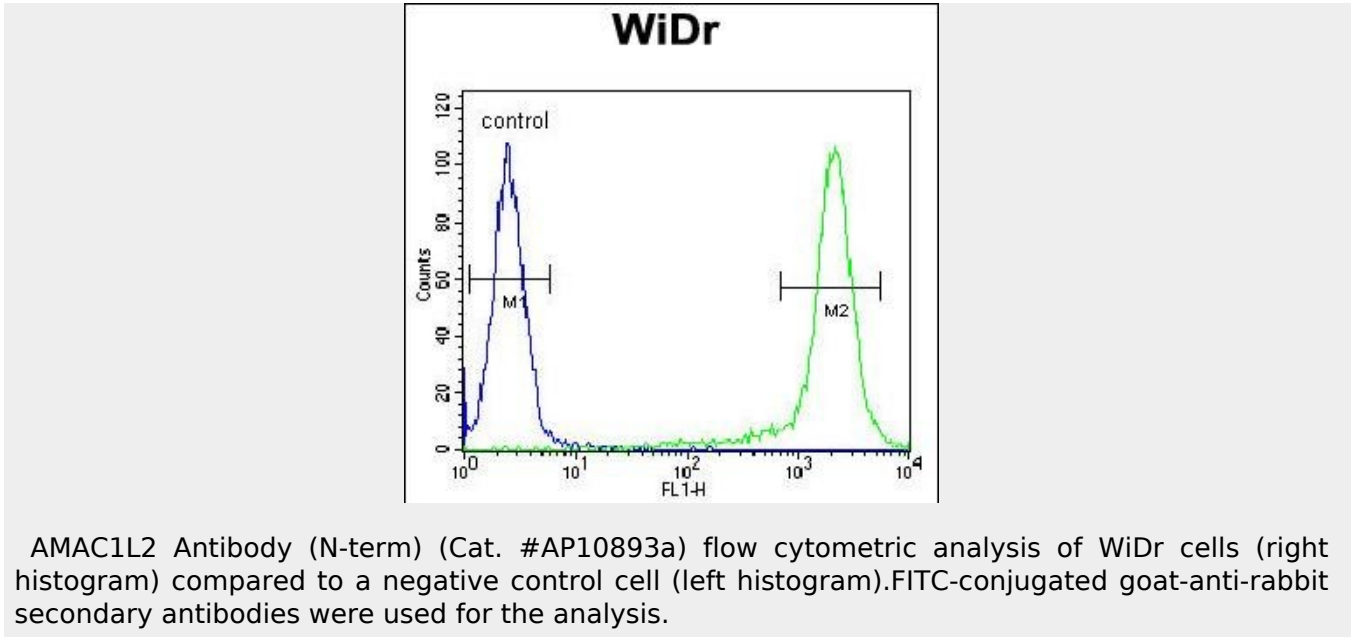
Provided below are standard protocols that you may find useful for product applications.

- [Western Blot](#)
- [Blocking Peptides](#)
- [Dot Blot](#)
- [Immunohistochemistry](#)
- [Immunofluorescence](#)
- [Immunoprecipitation](#)
- [Flow Cytometry](#)
- [Cell Culture](#)

AMAC1L2 Antibody (N-term) - Images



AMAC1L2 Antibody (N-term) (Cat. #AP10893a) western blot analysis in WiDr,A549 cell line lysates (35ug/lane).This demonstrates the AMAC1L2 antibody detected the AMAC1L2 protein (arrow).



AMAC1L2 Antibody (N-term) - Background

This gene seems to be intronless. It has high sequence similarity to the gene encoding acyl-malonyl condensing enzyme on chromosome 17.

AMAC1L2 Antibody (N-term) - References

- Fontaine-Bisson, B., et al. *Diabetologia* 53(10):2155-2162(2010)
- Weissglas-Volkov, D., et al. *Circ Cardiovasc Genet* 3(1):31-38(2010)
- Kathiresan, S., et al. *Nat. Genet.* 41(1):56-65(2009)
- Xing, J., et al. *Proc. Natl. Acad. Sci. U.S.A.* 103(47):17608-17613(2006)
- Appel, S., et al. *Eur. J. Hum. Genet.* 10(1):17-25(2002)