

OR2M3 Antibody (C-term)
Affinity Purified Rabbit Polyclonal Antibody (Pab)
Catalog # AP10864b

Specification

OR2M3 Antibody (C-term) - Product Information

Application	WB, FC,E
Primary Accession	O8NG83
Other Accession	NP_001004689.1
Reactivity	Human
Host	Rabbit
Clonality	Polyclonal
Isotype	Rabbit IgG
Calculated MW	34827
Antigen Region	244-272

OR2M3 Antibody (C-term) - Additional Information

Gene ID 127062

Other Names

Olfactory receptor 2M3, Olfactory receptor 2M6, Olfactory receptor OR1-54, OR2M3, OR2M3P, OR2M6

Target/Specificity

This OR2M3 antibody is generated from rabbits immunized with a KLH conjugated synthetic peptide between 244-272 amino acids from the C-terminal region of human OR2M3.

Dilution

WB~~1:1000
FC~~1:10~50

Format

Purified polyclonal antibody supplied in PBS with 0.09% (W/V) sodium azide. This antibody is purified through a protein A column, followed by peptide affinity purification.

Storage

Maintain refrigerated at 2-8°C for up to 2 weeks. For long term storage store at -20°C in small aliquots to prevent freeze-thaw cycles.

Precautions

OR2M3 Antibody (C-term) is for research use only and not for use in diagnostic or therapeutic procedures.

OR2M3 Antibody (C-term) - Protein Information

Name OR2M3

Synonyms OR2M3P, OR2M6

Function Odorant receptor.

Cellular Location

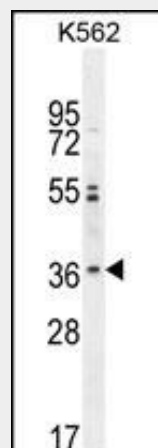
Cell membrane; Multi-pass membrane protein.

OR2M3 Antibody (C-term) - Protocols

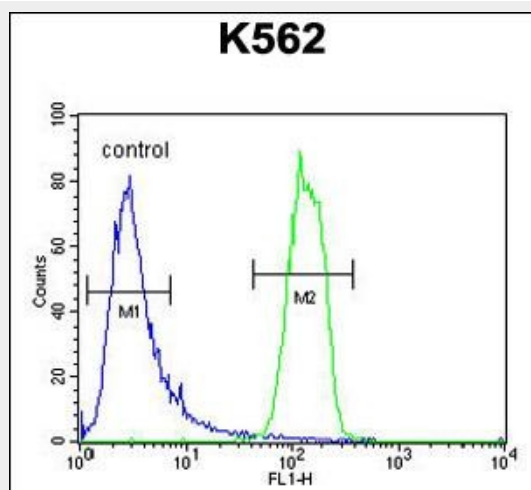
Provided below are standard protocols that you may find useful for product applications.

- [Western Blot](#)
- [Blocking Peptides](#)
- [Dot Blot](#)
- [Immunohistochemistry](#)
- [Immunofluorescence](#)
- [Immunoprecipitation](#)
- [Flow Cytometry](#)
- [Cell Culture](#)

OR2M3 Antibody (C-term) - Images



OR2M3 Antibody (C-term) (Cat. #AP10864b) western blot analysis in K562 cell line lysates (35ug/lane). This demonstrates the OR2M3 antibody detected the OR2M3 protein (arrow).



OR2M3 Antibody (C-term) (Cat. #AP10864b) flow cytometric analysis of K562 cells (right histogram) compared to a negative control cell (left histogram). FITC-conjugated goat-anti-rabbit secondary antibodies were used for the analysis.

OR2M3 Antibody (C-term) - Background

Olfactory receptors interact with odorant molecules in the nose, to initiate a neuronal response that triggers the perception of a smell. The olfactory receptor proteins are members of a large family of G-protein-coupled receptors (GPCR) arising from single coding-exon genes. Olfactory receptors share a 7-transmembrane domain structure with many neurotransmitter and hormone receptors and are responsible for the recognition and G protein-mediated transduction of odorant signals. The olfactory receptor gene family is the largest in the genome. The nomenclature assigned to the olfactory receptor genes and proteins for this organism is independent of other organisms.

OR2M3 Antibody (C-term) - References

Malnic, B., et al. Proc. Natl. Acad. Sci. U.S.A. 101(8):2584-2589(2004)
Fuchs, T., et al. Genomics 80(3):295-302(2002)