

TCL6 Antibody (C-term)
Affinity Purified Rabbit Polyclonal Antibody (Pab)
Catalog # AP10849b

Specification

TCL6 Antibody (C-term) - Product Information

Application	WB, FC,E
Primary Accession	P56846
Other Accession	NP_036600.2
Reactivity	Human
Host	Rabbit
Clonality	Polyclonal
Isotype	Rabbit IgG
Antigen Region	101-130

TCL6 Antibody (C-term) - Additional Information

Other Names

TCL6; TNG1; TNG2; Putative T-cell leukemia/lymphoma protein 6; TCL1 neighboring gene 1 protein

Target/Specificity

This TCL6 antibody is generated from rabbits immunized with a KLH conjugated synthetic peptide between 101-130 amino acids from the C-terminal region of human TCL6.

Dilution

WB~~1:1000
FC~~1:10~50

Format

Purified polyclonal antibody supplied in PBS with 0.09% (W/V) sodium azide. This antibody is purified through a protein A column, followed by peptide affinity purification.

Storage

Maintain refrigerated at 2-8°C for up to 2 weeks. For long term storage store at -20°C in small aliquots to prevent freeze-thaw cycles.

Precautions

TCL6 Antibody (C-term) is for research use only and not for use in diagnostic or therapeutic procedures.

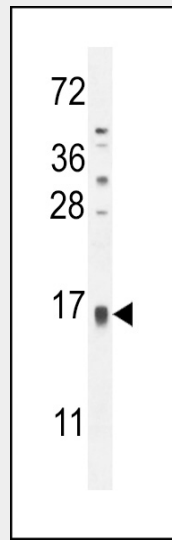
TCL6 Antibody (C-term) - Protein Information

TCL6 Antibody (C-term) - Protocols

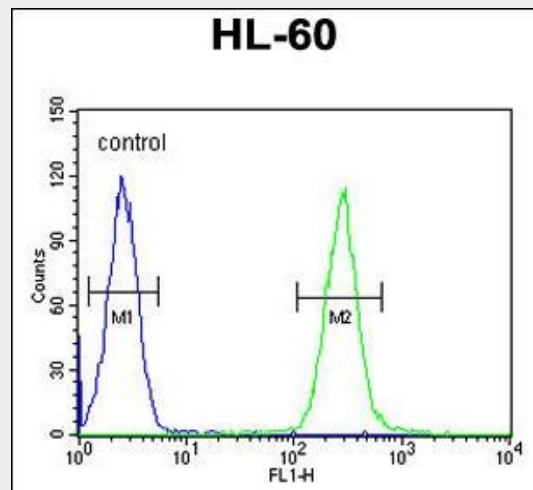
Provided below are standard protocols that you may find useful for product applications.

- [Western Blot](#)
- [Blocking Peptides](#)
- [Dot Blot](#)
- [Immunohistochemistry](#)
- [Immunofluorescence](#)
- [Immunoprecipitation](#)
- [Flow Cytometry](#)
- [Cell Culture](#)

TCL6 Antibody (C-term) - Images



TCL6 Antibody (C-term) (Cat. #AP10849b) western blot analysis in HL-60 cell line lysates (35ug/lane). This demonstrates the TCL6 antibody detected the TCL6 protein (arrow).



TCL6 Antibody (C-term) (Cat. #AP10849b) flow cytometric analysis of HL-60 cells (right histogram) compared to a negative control cell (left histogram). FITC-conjugated goat-anti-rabbit secondary antibodies were used for the analysis.