

VCX1 Antibody (N-term)
Affinity Purified Rabbit Polyclonal Antibody (Pab)
Catalog # AP10827a**Specification**

VCX1 Antibody (N-term) - Product Information

Application	WB, IHC-P,E
Primary Accession	Q9H320
Other Accession	Q9NNX9 , Q9H322 , NP_038480.2
Reactivity	Human
Host	Rabbit
Clonality	Polyclonal
Isotype	Rabbit IgG
Calculated MW	22289
Antigen Region	1-30

VCX1 Antibody (N-term) - Additional Information**Gene ID** 26609**Other Names**

Variable charge X-linked protein 1, Variable charge protein on X with ten repeats, VCX-10r, Variably charged protein X-B1, VCX-B1, VCX, VCX1, VCX10R, VCXB1

Target/Specificity

This VCX1 antibody is generated from rabbits immunized with a KLH conjugated synthetic peptide between 1-30 amino acids from the N-terminal region of human VCX1.

Dilution

WB~~1:1000

IHC-P~~1:50~100

E~~Use at an assay dependent concentration.

Format

Purified polyclonal antibody supplied in PBS with 0.09% (W/V) sodium azide. This antibody is purified through a protein A column, followed by peptide affinity purification.

Storage

Maintain refrigerated at 2-8°C for up to 2 weeks. For long term storage store at -20°C in small aliquots to prevent freeze-thaw cycles.

Precautions

VCX1 Antibody (N-term) is for research use only and not for use in diagnostic or therapeutic procedures.

VCX1 Antibody (N-term) - Protein Information**Name** VCX

Synonyms VCX1, VCX10R, VCXB1

Function May mediate a process in spermatogenesis or may play a role in sex ratio distortion.

Tissue Location

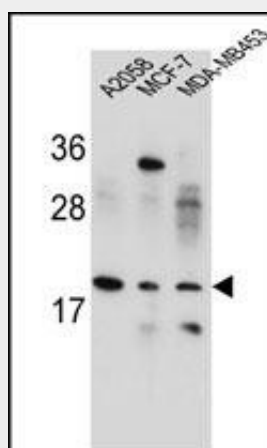
Expressed exclusively in testis.

VCX1 Antibody (N-term) - Protocols

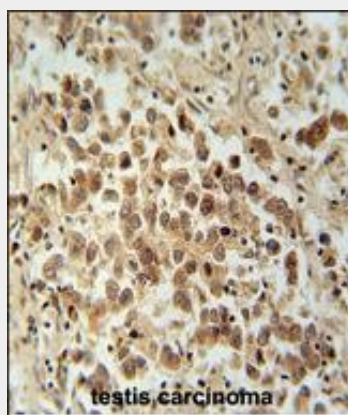
Provided below are standard protocols that you may find useful for product applications.

- [Western Blot](#)
- [Blocking Peptides](#)
- [Dot Blot](#)
- [Immunohistochemistry](#)
- [Immunofluorescence](#)
- [Immunoprecipitation](#)
- [Flow Cytometry](#)
- [Cell Culture](#)

VCX1 Antibody (N-term) - Images



VCX1/VCX2/VCX3 Antibody (N-term) (Cat. #AP10827a) western blot analysis in A2058, MCF-7, MDA-MB453 cell line lysates (35ug/lane). This demonstrates the VCX1/VCX2/VCX3 antibody detected the VCX1/VCX2/VCX3 protein (arrow).



VCX1 Antibody (N-term) (Cat. #AP10827a) immunohistochemistry analysis in formalin fixed and paraffin embedded human testis carcinoma followed by peroxidase conjugation of the secondary antibody and DAB staining. This data demonstrates the use of the VCX1 Antibody (N-term) for immunohistochemistry. Clinical relevance has not been evaluated.

VCX1 Antibody (N-term) - Background

This gene belongs to the VCX/Y gene family, which has multiple members on both X and Y chromosomes, and all are expressed exclusively in male germ cells. The X-linked members are clustered on chromosome Xp22 and Y-linked members are two identical copies of the gene within a palindromic region on Yq11. The family members share a high degree of sequence identity, with the exception that a 30-bp unit is tandemly repeated in X-linked members but occurs only once in Y-linked members. The VCX gene cluster is polymorphic in terms of copy number; different individuals may have a different number of VCX genes. VCX/Y genes encode small and highly charged proteins of unknown function. The presence of a putative bipartite nuclear localization signal suggests that VCX/Y members are nuclear proteins. This gene contains 10 repeats of the 30-bp unit.

VCX1 Antibody (N-term) - References

Hansen, M.A., et al. Mol. Reprod. Dev. 75(2):219-229(2008)
Sy, S.M., et al. Lung Cancer 41(1):91-99(2003)
Zou, S.W., et al. Cell Res. 13(3):171-177(2003)
Fukami, M., et al. Am. J. Hum. Genet. 67(3):563-573(2000)
Lahn, B.T., et al. Hum. Mol. Genet. 9(2):311-319(2000)