

**PTOV1 Antibody (N-term)**  
**Affinity Purified Rabbit Polyclonal Antibody (Pab)**  
**Catalog # AP10752a**

## Specification

---

### PTOV1 Antibody (N-term) - Product Information

Application	WB, IHC-P,E
Primary Accession	<a href="#">Q86YD1</a>
Other Accession	<a href="#">A4IFC9</a> , <a href="#">NP_059128.2</a>
Reactivity	Human, Mouse
Predicted	Bovine
Host	Rabbit
Clonality	Polyclonal
Isotype	Rabbit IgG
Calculated MW	46869
Antigen Region	25-52

### PTOV1 Antibody (N-term) - Additional Information

Gene ID 53635

#### Other Names

Prostate tumor-overexpressed gene 1 protein, PTOV-1, Activator interaction domain-containing protein 2, PTOV1, ACID2

#### Target/Specificity

This PTOV1 antibody is generated from rabbits immunized with a KLH conjugated synthetic peptide between 25-52 amino acids from the N-terminal region of human PTOV1.

#### Dilution

WB~~1:1000  
IHC-P~~1:50~100

#### Format

Purified polyclonal antibody supplied in PBS with 0.09% (W/V) sodium azide. This antibody is purified through a protein A column, followed by peptide affinity purification.

#### Storage

Maintain refrigerated at 2-8°C for up to 2 weeks. For long term storage store at -20°C in small aliquots to prevent freeze-thaw cycles.

#### Precautions

PTOV1 Antibody (N-term) is for research use only and not for use in diagnostic or therapeutic procedures.

### PTOV1 Antibody (N-term) - Protein Information

Name PTOV1

## Synonyms ACID2

**Function** May activate transcription. Required for nuclear translocation of FLOT1. Promotes cell proliferation.

## Cellular Location

Cytoplasm. Nucleus. Cell membrane. Cytoplasm, perinuclear region. Note=Translocates from the cytoplasm to the nucleus at the onset of S-phase (PubMed:12598323). Also localizes to lipid rafts (PubMed:15713644).

## Tissue Location

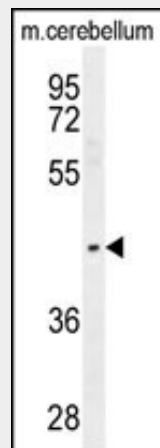
Expressed in brain, heart, kidney, liver, placenta, skeletal muscle and small intestine.

## PTOV1 Antibody (N-term) - Protocols

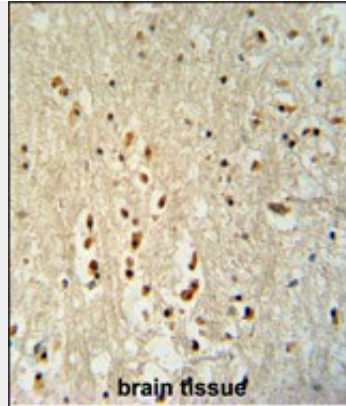
Provided below are standard protocols that you may find useful for product applications.

- [Western Blot](#)
- [Blocking Peptides](#)
- [Dot Blot](#)
- [Immunohistochemistry](#)
- [Immunofluorescence](#)
- [Immunoprecipitation](#)
- [Flow Cytometry](#)
- [Cell Culture](#)

## PTOV1 Antibody (N-term) - Images



PTOV1 Antibody (N-term) (Cat. #AP10752a) western blot analysis in mouse cerebellum tissue lysates (35ug/lane). This demonstrates the PTOV1 antibody detected the PTOV1 protein (arrow).



PTOV1 antibody (N-term) (Cat. #AP10752a) immunohistochemistry analysis in formalin fixed and paraffin embedded human brain tissue followed by peroxidase conjugation of the secondary antibody and DAB staining. This data demonstrates the use of the PTOV1 antibody (N-term) for immunohistochemistry. Clinical relevance has not been evaluated.

#### **PTOV1 Antibody (N-term) - Background**

May activate transcription. Required for nuclear translocation of FLOT1. Promotes cell proliferation.

#### **PTOV1 Antibody (N-term) - References**

- Morote, J., et al. Clin. Cancer Res. 14(9):2617-2622(2008)
- Santamaria, A., et al. Mol. Cell. Biol. 25(5):1900-1911(2005)
- Mittler, G., et al. EMBO J. 22(24):6494-6504(2003)
- Clark, H.F., et al. Genome Res. 13(10):2265-2270(2003)
- Santamaria, A., et al. Am. J. Pathol. 162(3):897-905(2003)