

**NDUFAF1 Antibody (C-term)**  
**Affinity Purified Rabbit Polyclonal Antibody (Pab)**  
**Catalog # AP10745B**

**Specification**

---

**NDUFAF1 Antibody (C-term) - Product Information**

Application	<b>WB, IHC-P,E</b>
Primary Accession	<a href="#">O9Y375</a>
Other Accession	<a href="#">NP_057097.2</a>
Reactivity	<b>Human</b>
Host	<b>Rabbit</b>
Clonality	<b>Polyclonal</b>
Isotype	<b>Rabbit IgG</b>
Calculated MW	<b>37764</b>
Antigen Region	<b>247-276</b>

**NDUFAF1 Antibody (C-term) - Additional Information**

**Gene ID** 51103

**Other Names**

Complex I intermediate-associated protein 30, mitochondrial, NADH dehydrogenase [ubiquinone] 1 alpha subcomplex assembly factor 1, NDUFAF1, CIA30

**Target/Specificity**

This NDUFAF1 antibody is generated from rabbits immunized with a KLH conjugated synthetic peptide between 247-276 amino acids from the C-terminal region of human NDUFAF1.

**Dilution**

WB~~1:1000  
IHC-P~~1:50~100

**Format**

Purified polyclonal antibody supplied in PBS with 0.09% (W/V) sodium azide. This antibody is purified through a protein A column, followed by peptide affinity purification.

**Storage**

Maintain refrigerated at 2-8°C for up to 2 weeks. For long term storage store at -20°C in small aliquots to prevent freeze-thaw cycles.

**Precautions**

NDUFAF1 Antibody (C-term) is for research use only and not for use in diagnostic or therapeutic procedures.

**NDUFAF1 Antibody (C-term) - Protein Information**

**Name** NDUFAF1 ([HGNC:18828](#))

### Synonyms CIA30

**Function** As part of the MCIA complex, involved in the assembly of the mitochondrial complex I.

### Cellular Location

Mitochondrion. Mitochondrion matrix. Note=Peripherally associated with the matrix face of the mitochondrial inner membrane

### Tissue Location

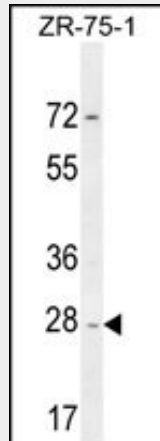
Ubiquitous..

### NDUFAF1 Antibody (C-term) - Protocols

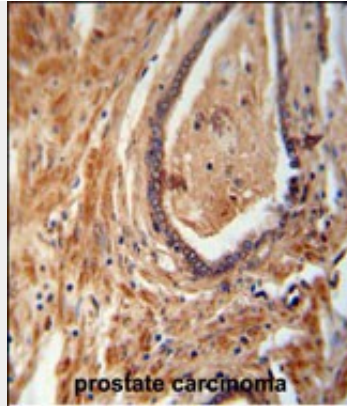
Provided below are standard protocols that you may find useful for product applications.

- [Western Blot](#)
- [Blocking Peptides](#)
- [Dot Blot](#)
- [Immunohistochemistry](#)
- [Immunofluorescence](#)
- [Immunoprecipitation](#)
- [Flow Cytometry](#)
- [Cell Culture](#)

### NDUFAF1 Antibody (C-term) - Images



NDUFAF1 Antibody (C-term) (Cat. #AP10745b) western blot analysis in ZR-75-1 cell line lysates (35ug/lane). This demonstrates the NDUFAF1 antibody detected the NDUFAF1 protein (arrow).



NDUFAF1 antibody (C-term) (Cat. #AP10745b) immunohistochemistry analysis in formalin fixed and paraffin embedded human prostate carcinoma followed by peroxidase conjugation of the secondary antibody and DAB staining. This data demonstrates the use of the NDUFAF1 antibody (C-term) for immunohistochemistry. Clinical relevance has not been evaluated.

#### **NDUFAF1 Antibody (C-term) - Background**

The NDUFAF1 gene encodes the human homolog of a *Neurospora crassa* Cia30 protein involved in the assembly of complex I.

#### **NDUFAF1 Antibody (C-term) - References**

Wheeler, H.E., et al. PLoS Genet. 5 (10), E1000685 (2009) :  
Dunning, C.J., et al. EMBO J. 26(13):3227-3237(2007)  
Vogel, R.O., et al. Mol. Genet. Metab. 91(2):176-182(2007)  
Vogel, R.O., et al. Genes Dev. 21(5):615-624(2007)  
Ewing, R.M., et al. Mol. Syst. Biol. 3, 89 (2007) :