

TMLHE Antibody (N-term)
Affinity Purified Rabbit Polyclonal Antibody (Pab)
Catalog # AP10744a

Specification

TMLHE Antibody (N-term) - Product Information

Application	WB,E
Primary Accession	O9NVH6
Other Accession	O91ZE0 , O0VC74 , NP_060666.1
Reactivity	Human
Predicted	Bovine, Mouse
Host	Rabbit
Clonality	Polyclonal
Isotype	Rabbit IgG
Calculated MW	49518
Antigen Region	120-149

TMLHE Antibody (N-term) - Additional Information

Gene ID 55217

Other Names

Trimethyllysine dioxygenase, mitochondrial, Epsilon-trimethyllysine 2-oxoglutarate dioxygenase, Epsilon-trimethyllysine hydroxylase, TML hydroxylase, TML-alpha-ketoglutarate dioxygenase, TML dioxygenase, TMLD, TMLHE, TMLH

Target/Specificity

This TMLHE antibody is generated from rabbits immunized with a KLH conjugated synthetic peptide between 120-149 amino acids from the N-terminal region of human TMLHE.

Dilution

WB~~1:1000

Format

Purified polyclonal antibody supplied in PBS with 0.09% (W/V) sodium azide. This antibody is purified through a protein A column, followed by peptide affinity purification.

Storage

Maintain refrigerated at 2-8°C for up to 2 weeks. For long term storage store at -20°C in small aliquots to prevent freeze-thaw cycles.

Precautions

TMLHE Antibody (N-term) is for research use only and not for use in diagnostic or therapeutic procedures.

TMLHE Antibody (N-term) - Protein Information

Name TMLHE

Synonyms TMLH

Function Converts trimethyllysine (TML) into hydroxytrimethyllysine (HTML) (PubMed:[11431483](#), PubMed:[23092983](#)).

Cellular Location

Mitochondrion matrix

Tissue Location

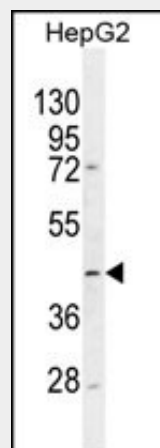
All isoforms, but isoform 8, are widely expressed in adult and fetal tissues. Isoform 8 is restricted to heart and skeletal muscle.

TMLHE Antibody (N-term) - Protocols

Provided below are standard protocols that you may find useful for product applications.

- [Western Blot](#)
- [Blocking Peptides](#)
- [Dot Blot](#)
- [Immunohistochemistry](#)
- [Immunofluorescence](#)
- [Immunoprecipitation](#)
- [Flow Cytometry](#)
- [Cell Culture](#)

TMLHE Antibody (N-term) - Images



TMLHE Antibody (N-term) (Cat. #AP10744a) western blot analysis in HepG2 cell line lysates (35ug/lane). This demonstrates the TMLHE antibody detected the TMLHE protein (arrow).

TMLHE Antibody (N-term) - Background

This gene encodes the protein trimethyllysine dioxygenase which is the first enzyme in the carnitine biosynthesis pathway. Carnitine play an essential role in the transport of activated fatty acids across the inner mitochondrial membrane. The encoded protein converts trimethyllysine into hydroxytrimethyllysine. A pseudogene of this gene is found on chromosome X. Alternate splicing results in multiple transcript variants.

TMLHE Antibody (N-term) - References

Monfregola, J., et al. Gene 395 (1-2), 86-97 (2007) :
Monfregola, J., et al. J. Cell. Physiol. 204(3):839-847(2005)
Vaz, F.M., et al. J. Biol. Chem. 276(36):33512-33517(2001)
Rogner, U.C., et al. Genome Res. 6(10):922-934(1996)