

**RPH3AL Antibody (C-term)**  
**Affinity Purified Rabbit Polyclonal Antibody (Pab)**  
**Catalog # AP10741b**

**Specification**

---

**RPH3AL Antibody (C-term) - Product Information**

Application	WB, IHC-P,E
Primary Accession	<a href="#">O9UNE2</a>
Other Accession	<a href="#">NP_008918.1</a>
Reactivity	Human
Host	Rabbit
Clonality	Polyclonal
Isotype	Rabbit IgG
Calculated MW	34464
Antigen Region	208-237

**RPH3AL Antibody (C-term) - Additional Information**

**Gene ID** 9501

**Other Names**

Rab effector Noc2, No C2 domains protein, Rabphilin-3A-like protein, RPH3AL, NOC2

**Target/Specificity**

This RPH3AL antibody is generated from rabbits immunized with a KLH conjugated synthetic peptide between 208-237 amino acids from the C-terminal region of human RPH3AL.

**Dilution**

WB~~1:1000  
IHC-P~~1:50~100

**Format**

Purified polyclonal antibody supplied in PBS with 0.09% (W/V) sodium azide. This antibody is purified through a protein A column, followed by peptide affinity purification.

**Storage**

Maintain refrigerated at 2-8°C for up to 2 weeks. For long term storage store at -20°C in small aliquots to prevent freeze-thaw cycles.

**Precautions**

RPH3AL Antibody (C-term) is for research use only and not for use in diagnostic or therapeutic procedures.

**RPH3AL Antibody (C-term) - Protein Information**

**Name** RPH3AL

**Synonyms** NOC2

**Function** Rab GTPase effector involved in the late steps of regulated exocytosis, both in endocrine and exocrine cells (By similarity). Acts as a potential RAB3B effector protein in epithelial cells.

**Cellular Location**

Cytoplasm. Cytoplasmic vesicle, secretory vesicle membrane. Note=Recruited to the vesicle membrane in a GTP- and RAB3B-dependent manner in epithelial cells

**Tissue Location**

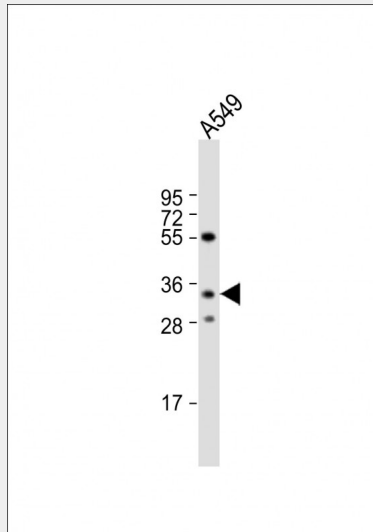
Moderate to high levels of expression in thyroid, ovary, stomach, heart, pancreas, skeletal muscle, kidney and liver Also detected in epithelial cells.

**RPH3AL Antibody (C-term) - Protocols**

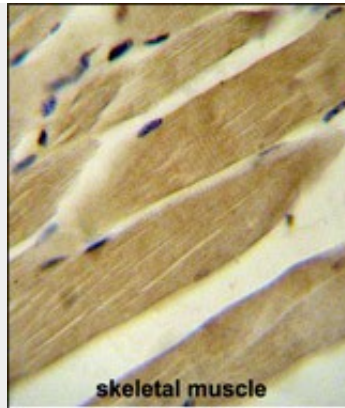
Provided below are standard protocols that you may find useful for product applications.

- [Western Blot](#)
- [Blocking Peptides](#)
- [Dot Blot](#)
- [Immunohistochemistry](#)
- [Immunofluorescence](#)
- [Immunoprecipitation](#)
- [Flow Cytometry](#)
- [Cell Culture](#)

**RPH3AL Antibody (C-term) - Images**



Anti-RPH3AL Antibody (C-term) at 1:1000 dilution + A549 whole cell lysate Lysates/proteins at 20 µg per lane. Secondary Goat Anti-Rabbit IgG, (H+L), Peroxidase conjugated at 1/10000 dilution. Predicted band size : 34 kDa Blocking/Dilution buffer: 5% NFD/MBST.



RPH3AL Antibody (C-term) (Cat. #AP10741b) immunohistochemistry analysis in formalin fixed and paraffin embedded human skeletal muscle followed by peroxidase conjugation of the secondary antibody and DAB staining. This data demonstrates the use of the RPH3AL Antibody (C-term) for immunohistochemistry. Clinical relevance has not been evaluated.

#### **RPH3AL Antibody (C-term) - Background**

The protein encoded by this gene plays a direct regulatory role in calcium-ion-dependent exocytosis in both endocrine and exocrine cells and plays a key role in insulin secretion by pancreatic cells. This gene is likely a tumor suppressor. Alternative splicing results in multiple transcript variants encoding distinct isoforms.

#### **RPH3AL Antibody (C-term) - References**

Rose, J. Phd, et al. Mol. Med. (2010) In press : Shanmugam, C., et al. Biotech Histochem 84(2):39-45(2009) Katkoori, V.R., et al. Front. Biosci. 13, 1050-1061 (2008) : Matsumoto, M., et al. Proc. Natl. Acad. Sci. U.S.A. 101(22):8313-8318(2004) Manabe, S., et al. Biochem. Biophys. Res. Commun. 316(1):218-225(2004)