

**ORMDL3 Antibody (Center)**  
**Affinity Purified Rabbit Polyclonal Antibody (Pab)**  
**Catalog # AP10739c**

**Specification**

---

**ORMDL3 Antibody (Center) - Product Information**

Application	<b>WB,E</b>
Primary Accession	<a href="#">Q8N138</a> , <a href="#">Q9P0S3</a> , <a href="#">Q53FV1</a>
Other Accession	<a href="#">Q6QI25</a> , <a href="#">Q9CPZ6</a> , <a href="#">Q5XJR6</a> , <a href="#">Q0VD15</a> , <a href="#">Q9COZ0</a> , <a href="#">Q5E972</a> , <a href="#">Q5XH57</a> , <a href="#">Q8JFB7</a> , <a href="#">Q29R09</a> , <a href="#">NP_644809.1</a> , <a href="#">Q8JFB7</a> , <a href="#">Q9P0S3</a> , <a href="#">Q53FV1</a> , <a href="#">Q8N138</a>
Reactivity	<b>Human, Mouse</b>
Predicted	<b>Bovine, Zebrafish, Xenopus, Rat</b>
Host	<b>Rabbit</b>
Clonality	<b>Polyclonal</b>
Isotype	<b>Rabbit IgG</b>
Antigen Region	<b>53-81</b>

**ORMDL3 Antibody (Center) - Additional Information**

**Other Names**

ORM1-like protein 3, ORMDL3

**Target/Specificity**

This ORMDL3 antibody is generated from rabbits immunized with a KLH conjugated synthetic peptide between 53-81 amino acids from the Central region of human ORMDL3.

**Dilution**

WB~~1:1000

**Format**

Purified polyclonal antibody supplied in PBS with 0.09% (W/V) sodium azide. This antibody is purified through a protein A column, followed by peptide affinity purification.

**Storage**

Maintain refrigerated at 2-8°C for up to 2 weeks. For long term storage store at -20°C in small aliquots to prevent freeze-thaw cycles.

**Precautions**

ORMDL3 Antibody (Center) is for research use only and not for use in diagnostic or therapeutic procedures.

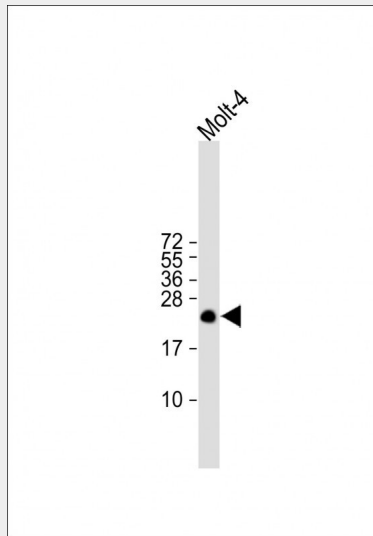
**ORMDL3 Antibody (Center) - Protein Information**

**ORMDL3 Antibody (Center) - Protocols**

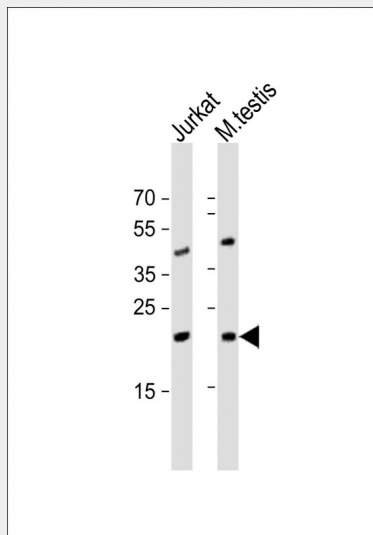
Provided below are standard protocols that you may find useful for product applications.

- [Western Blot](#)
- [Blocking Peptides](#)
- [Dot Blot](#)
- [Immunohistochemistry](#)
- [Immunofluorescence](#)
- [Immunoprecipitation](#)
- [Flow Cytometry](#)
- [Cell Culture](#)

### ORMDL3 Antibody (Center) - Images



All lanes : Anti-ORMDL3 Antibody (Center) at 1:1000 dilution Lane 1: Molt-4 whole cell lysate Lysates/proteins at 20  $\mu$ g per lane. Secondary Goat Anti-Rabbit IgG, (H+L), Peroxidase conjugated at 1/10000 dilution. Observed band size : 23 kDa Blocking/Dilution buffer: 5% NFDM/TBST.



All lanes : Anti-ORMDL3 Antibody (Center) at 1:1000 dilution Lane 1: Jurkat whole cell lysate Lane 2: mouse testis lysate Lysates/proteins at 20  $\mu$ g per lane. Secondary Goat Anti-Rabbit IgG, (H+L), Peroxidase conjugated at 1/10000 dilution. Predicted band size : 17 kDa Blocking/Dilution buffer: 5% NFDM/TBST.

### **ORMDL3 Antibody (Center) - Background**

Negative regulator of sphingolipid synthesis. May indirectly regulate endoplasmic reticulum-mediated Ca(+2) signaling.

### **ORMDL3 Antibody (Center) - References**

Fransen, K., et al. Hum. Mol. Genet. 19(17):3482-3488(2010) Liu, X., et al. Nat. Genet. 42(8):658-660(2010) Halapi, E., et al. Eur. J. Hum. Genet. 18(8):902-908(2010) Dobbins, S.E., et al. Int. J. Cancer (2010) In press : McGovern, D.P., et al. Nat. Genet. 42(4):332-337(2010)

### **ORMDL3 Antibody (Center) - Citations**

- [ORMDL3 regulates poly I:C induced inflammatory responses in airway epithelial cells](#)
- [The ORMDL3 Asthma Gene Regulates ICAM1 and has Multiple Effects on Cellular Inflammation.](#)
- [Staurosporines decrease ORMDL proteins and enhance sphingomyelin synthesis resulting in depletion of plasmalemmal phosphatidylserine.](#)
- [ORMDL proteins regulate ceramide levels during sterile inflammation.](#)
- [ORMDL3 modulates store-operated calcium entry and lymphocyte activation.](#)
- [ORMDL3 is an inducible lung epithelial gene regulating metalloproteases, chemokines, OAS, and ATF6.](#)