

PRSS1 Antibody (Center)
Affinity Purified Rabbit Polyclonal Antibody (Pab)
Catalog # AP10735c

Specification

PRSS1 Antibody (Center) - Product Information

Application	WB, IHC-P,E
Primary Accession	P07477
Other Accession	NP_002760.1
Reactivity	Human
Host	Rabbit
Clonality	Polyclonal
Isotype	Rabbit IgG
Calculated MW	26558
Antigen Region	81-107

PRSS1 Antibody (Center) - Additional Information

Gene ID 5644

Other Names

Trypsin-1, Beta-trypsin, Cationic trypsinogen, Serine protease 1, Trypsin I, Alpha-trypsin chain 1, Alpha-trypsin chain 2, PRSS1, TRP1, TRY1, TRYP1

Target/Specificity

This PRSS1 antibody is generated from rabbits immunized with a KLH conjugated synthetic peptide between 81-107 amino acids from the Central region of human PRSS1.

Dilution

WB~~1:1000
IHC-P~~1:100

Format

Purified polyclonal antibody supplied in PBS with 0.09% (W/V) sodium azide. This antibody is purified through a protein A column, followed by peptide affinity purification.

Storage

Maintain refrigerated at 2-8°C for up to 2 weeks. For long term storage store at -20°C in small aliquots to prevent freeze-thaw cycles.

Precautions

PRSS1 Antibody (Center) is for research use only and not for use in diagnostic or therapeutic procedures.

PRSS1 Antibody (Center) - Protein Information

Name PRSS1 ([HGNC:9475](#))

Function Has activity against the synthetic substrates Boc-Phe-Ser- Arg-Mec, Boc-Leu-Thr-Arg-Mec, Boc-Gln-Ala-Arg-Mec and Boc-Val-Pro-Arg- Mec. The single-chain form is more active than the two-chain form against all of these substrates.

Cellular Location

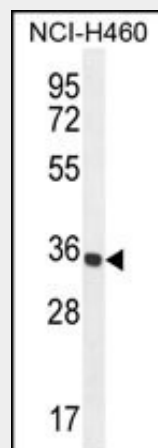
Secreted, extracellular space.

PRSS1 Antibody (Center) - Protocols

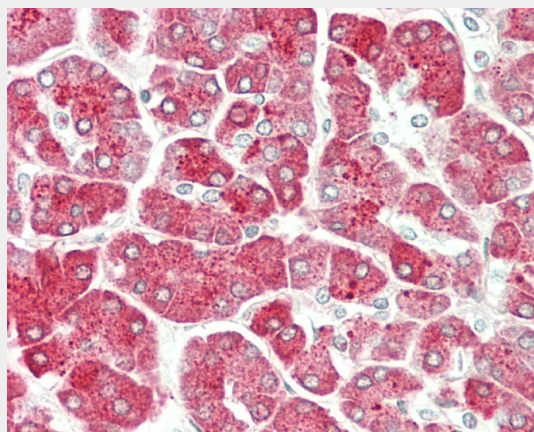
Provided below are standard protocols that you may find useful for product applications.

- [Western Blot](#)
- [Blocking Peptides](#)
- [Dot Blot](#)
- [Immunohistochemistry](#)
- [Immunofluorescence](#)
- [Immunoprecipitation](#)
- [Flow Cytometry](#)
- [Cell Culture](#)

PRSS1 Antibody (Center) - Images



PRSS1 Antibody (Center) (Cat. #AP10735c) western blot analysis in NCI-H460 cell line lysates (35ug/lane). This demonstrates the PRSS1 antibody detected the PRSS1 protein (arrow).



Formalin-fixed and paraffin-embedded H.pancreas tissue reacted with PRSS1 Antibody (Center)

(Cat#AP10735c).

PRSS1 Antibody (Center) - Background

This gene encodes a trypsinogen, which is a member of the trypsin family of serine proteases. This enzyme is secreted by the pancreas and cleaved to its active form in the small intestine. It is active on peptide linkages involving the carboxyl group of lysine or arginine. Mutations in this gene are associated with hereditary pancreatitis. This gene and several other trypsinogen genes are localized to the T cell receptor beta locus on chromosome 7.

PRSS1 Antibody (Center) - References

Joergensen, M.T., et al. Am. J. Gastroenterol. 105(8):1876-1883(2010)
Gasiorowska, A., et al. Dig. Dis. Sci. (2010) In press :
Szmola, R., et al. J. Med. Genet. 47(5):348-350(2010)
Nakanuma, S., et al. Int. J. Oncol. 36(4):793-800(2010)
Johansen, D., et al. Pancreatology 10 (2-3), 229-237 (2010) :

PRSS1 Antibody (Center) - Citations

- [Trypsin activity governs increased susceptibility to pancreatitis in mice expressing human PRSS1R122H](#)
- [Transgenic Expression of PRSS1R122H Sensitizes Mice to Pancreatitis.](#)