

ETS1 Antibody (N-term)
Affinity Purified Rabbit Polyclonal Antibody (Pab)
Catalog # AP10718a

Specification

ETS1 Antibody (N-term) - Product Information

Application	IF, WB, FC,E
Primary Accession	P14921
Other Accession	P41156 , P27577 , NP_005229.1
Reactivity	Human
Predicted	Mouse, Rat
Host	Rabbit
Clonality	Polyclonal
Isotype	Rabbit IgG
Antigen Region	43-70

ETS1 Antibody (N-term) - Additional Information

Gene ID 2113

Other Names

Protein C-ets-1, p54, ETS1, EWSR2

Target/Specificity

This ETS1 antibody is generated from rabbits immunized with a KLH conjugated synthetic peptide between 43-70 amino acids from the N-terminal region of human ETS1.

Dilution

IF~~1:10~50
WB~~1:1000
FC~~1:10~50

Format

Purified polyclonal antibody supplied in PBS with 0.09% (W/V) sodium azide. This antibody is purified through a protein A column, followed by peptide affinity purification.

Storage

Maintain refrigerated at 2-8°C for up to 2 weeks. For long term storage store at -20°C in small aliquots to prevent freeze-thaw cycles.

Precautions

ETS1 Antibody (N-term) is for research use only and not for use in diagnostic or therapeutic procedures.

ETS1 Antibody (N-term) - Protein Information

Name ETS1

Synonyms EWSR2

Function Transcription factor (PubMed:[10698492](#), PubMed:[11909962](#)). Directly controls the expression of cytokine and chemokine genes in a wide variety of different cellular contexts (PubMed:[20378371](#)). May control the differentiation, survival and proliferation of lymphoid cells (PubMed:[20378371](#)). May also regulate angiogenesis through regulation of expression of genes controlling endothelial cell migration and invasion (PubMed:[15247905](#), PubMed:[15592518](#)).

Cellular Location

Nucleus. Cytoplasm Note=Delocalizes from nucleus to cytoplasm when coexpressed with isoform Ets-1 p27.

Tissue Location

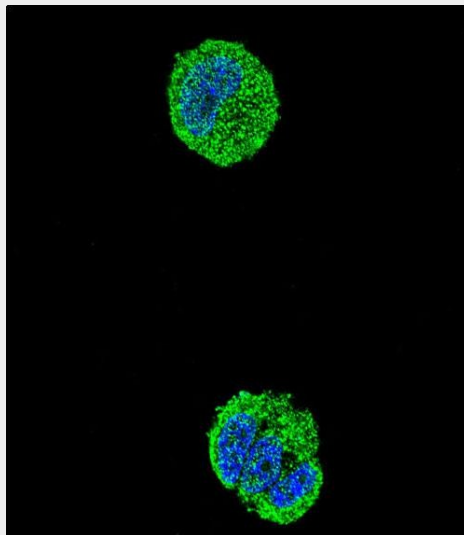
Highly expressed within lymphoid cells. Isoforms c- ETS-1A and Ets-1 p27 are both detected in all fetal tissues tested, but vary with tissue type in adult tissues. None is detected in brain or kidney.

ETS1 Antibody (N-term) - Protocols

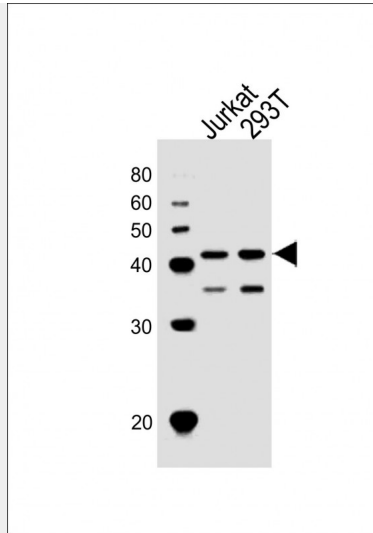
Provided below are standard protocols that you may find useful for product applications.

- [Western Blot](#)
- [Blocking Peptides](#)
- [Dot Blot](#)
- [Immunohistochemistry](#)
- [Immunofluorescence](#)
- [Immunoprecipitation](#)
- [Flow Cytometry](#)
- [Cell Culture](#)

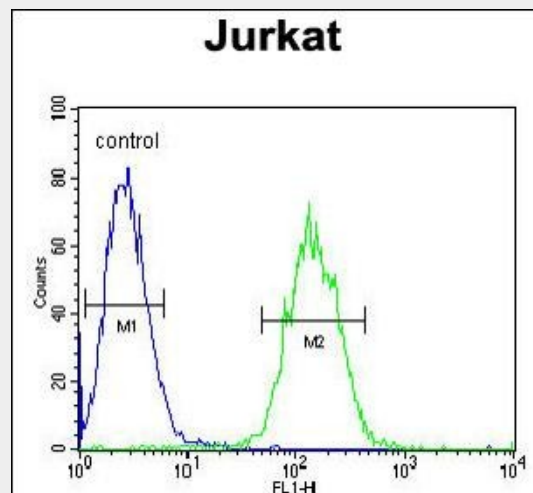
ETS1 Antibody (N-term) - Images



Confocal immunofluorescent analysis of ETS1 Antibody (N-term)(Cat#AP10718a) with MCF-7 cell followed by Alexa Fluor® 488-conjugated goat anti-rabbit IgG (green). DAPI was used to stain the cell nuclear (blue).



All lanes : Anti-ETS1 Antibody (N-term) at 1:1000 dilution Lane 1: Jurkat whole cell lysates Lane 2: 293T whole cell lysates Lysates/proteins at 20 µg per lane. Secondary Goat Anti-Rabbit IgG, (H+L), Peroxidase conjugated at 1/10000 dilution Predicted band size : 50 kDa Blocking/Dilution buffer: 5% NFDM/TBST.



ETS1 Antibody (N-term) (Cat. #AP10718a) flow cytometric analysis of Jurkat cells (right histogram) compared to a negative control cell (left histogram).FITC-conjugated goat-anti-rabbit secondary antibodies were used for the analysis.

ETS1 Antibody (N-term) - Background

ETS transcriptions factors, such as ETS1, regulate numerous genes and are involved in stem cell development, cell senescence and death, and tumorigenesis. The conserved ETS domain within these proteins is a winged helix-turn-helix DNA-binding domain that recognizes the core consensus DNA sequence GGAA/T of target genes (summary by Dwyer et al., 2007 [PubMed 17986575]).

ETS1 Antibody (N-term) - References

Harris, T.A., et al. *Arterioscler. Thromb. Vasc. Biol.* 30(10):1990-1997(2010) He, C.F., et al. *Lupus* 19(10):1181-1186(2010) Russell, L., et al. *Cytokine* 51(3):217-226(2010) Li, T., et al. *Pharm Biol* 48(2):161-165(2010) Kunderfranco, P., et al. *PLoS ONE* 5 (5), E10547 (2010) :