

**CLDN6 Antibody (Center)**  
**Affinity Purified Rabbit Polyclonal Antibody (Pab)**  
**Catalog # AP10712C**

**Specification**

---

**CLDN6 Antibody (Center) - Product Information**

Application	WB,E
Primary Accession	<a href="#">P56747</a>
Other Accession	<a href="#">O9YH90</a> , <a href="#">NP_067018.2</a>
Reactivity	Human, Mouse
Predicted	Zebrafish
Host	Rabbit
Clonality	Polyclonal
Isotype	Rabbit IgG
Antigen Region	130-159

**CLDN6 Antibody (Center) - Additional Information**

**Gene ID** 9074

**Other Names**

Claudin-6, Skullin, CLDN6

**Target/Specificity**

This CLDN6 antibody is generated from rabbits immunized with a KLH conjugated synthetic peptide between 130-159 amino acids from the Central region of human CLDN6.

**Dilution**

WB~~1:1000

**Format**

Purified polyclonal antibody supplied in PBS with 0.09% (W/V) sodium azide. This antibody is purified through a protein A column, followed by peptide affinity purification.

**Storage**

Maintain refrigerated at 2-8°C for up to 2 weeks. For long term storage store at -20°C in small aliquots to prevent freeze-thaw cycles.

**Precautions**

CLDN6 Antibody (Center) is for research use only and not for use in diagnostic or therapeutic procedures.

**CLDN6 Antibody (Center) - Protein Information**

**Name** CLDN6

**Function** Plays a major role in tight junction-specific obliteration of the intercellular space.

### Cellular Location

Cell junction, tight junction {ECO:0000250|UniProtKB:Q9Z262}. Cell membrane; Multi-pass membrane protein

### Tissue Location

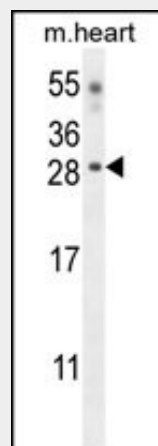
Expressed in the liver, in peripheral blood mononuclear cells and hepatocarcinoma cell lines

## CLDN6 Antibody (Center) - Protocols

Provided below are standard protocols that you may find useful for product applications.

- [Western Blot](#)
- [Blocking Peptides](#)
- [Dot Blot](#)
- [Immunohistochemistry](#)
- [Immunofluorescence](#)
- [Immunoprecipitation](#)
- [Flow Cytometry](#)
- [Cell Culture](#)

## CLDN6 Antibody (Center) - Images



CLDN6 Antibody (Center) (Cat. #AP10712c) western blot analysis in mouse heart tissue lysates (35ug/lane). This demonstrates the CLDN6 antibody detected the CLDN6 protein (arrow).

## CLDN6 Antibody (Center) - Background

Tight junctions represent one mode of cell-to-cell adhesion in epithelial or endothelial cell sheets, forming continuous seals around cells and serving as a physical barrier to prevent solutes and water from passing freely through the paracellular space. These junctions are comprised of sets of continuous networking strands in the outwardly facing cytoplasmic leaflet, with complementary grooves in the inwardly facing extracytoplasmic leaflet. This gene encodes a component of tight junction strands, which is a member of the claudin family. The protein is an integral membrane protein and is one of the entry cofactors for hepatitis C virus. The gene methylation may be involved in esophageal tumorigenesis. This gene is adjacent to another family member CLDN9 on chromosome 16.

**CLDN6 Antibody (Center) - References**

- Wu, Q., et al. Eur. J. Cancer Prev. 19(3):186-194(2010)  
Kleinschmidt-DeMasters, B.K., et al. Am. J. Surg. Pathol. 34(3):341-354(2010)  
Rendon-Huerta, E., et al. J Gastrointest Cancer 41(1):52-59(2010)  
Wu, Q., et al. Zhonghua Yi Xue Za Zhi 90(6):407-412(2010)  
Hosgood, H.D. III, et al. Occup Environ Med 66(12):848-853(2009)