

**PON1 Antibody (Center)**  
**Affinity Purified Rabbit Polyclonal Antibody (Pab)**  
**Catalog # AP10684c**

## Specification

---

### PON1 Antibody (Center) - Product Information

Application	WB, IHC-P, FC,E
Primary Accession	<a href="#">P27169</a>
Other Accession	<a href="#">NP_000437.3</a>
Reactivity	Human
Host	Rabbit
Clonality	Polyclonal
Isotype	Rabbit IgG
Calculated MW	39731
Antigen Region	118-145

### PON1 Antibody (Center) - Additional Information

**Gene ID** 5444

#### Other Names

Serum paraoxonase/arylesterase 1, PON 1, Aromatic esterase 1, A-esterase 1, K-45, Serum aryldialkylphosphatase 1, PON1, PON

#### Target/Specificity

This PON1 antibody is generated from rabbits immunized with a KLH conjugated synthetic peptide between 118-145 amino acids from the Central region of human PON1.

#### Dilution

WB~~1:1000  
IHC-P~~1:10~50  
FC~~1:10~50

#### Format

Purified polyclonal antibody supplied in PBS with 0.09% (W/V) sodium azide. This antibody is purified through a protein A column, followed by peptide affinity purification.

#### Storage

Maintain refrigerated at 2-8°C for up to 2 weeks. For long term storage store at -20°C in small aliquots to prevent freeze-thaw cycles.

#### Precautions

PON1 Antibody (Center) is for research use only and not for use in diagnostic or therapeutic procedures.

### PON1 Antibody (Center) - Protein Information

**Name** PON1

## Synonyms PON

**Function** Hydrolyzes the toxic metabolites of a variety of organophosphorus insecticides. Capable of hydrolyzing a broad spectrum of organophosphate substrates and lactones, and a number of aromatic carboxylic acid esters. Mediates an enzymatic protection of low density lipoproteins against oxidative modification and the consequent series of events leading to atheroma formation.

## Cellular Location

Secreted, extracellular space.

## Tissue Location

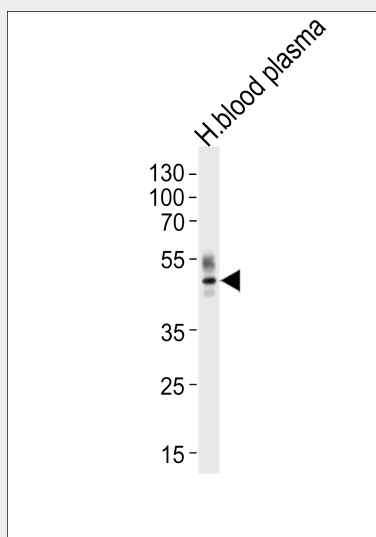
Plasma, associated with HDL (at protein level). Expressed in liver, but not in heart, brain, placenta, lung, skeletal muscle, kidney or pancreas.

## PON1 Antibody (Center) - Protocols

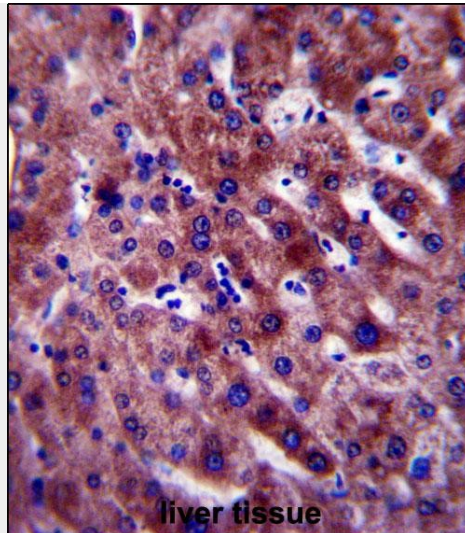
Provided below are standard protocols that you may find useful for product applications.

- [Western Blot](#)
- [Blocking Peptides](#)
- [Dot Blot](#)
- [Immunohistochemistry](#)
- [Immunofluorescence](#)
- [Immunoprecipitation](#)
- [Flow Cytometry](#)
- [Cell Culture](#)

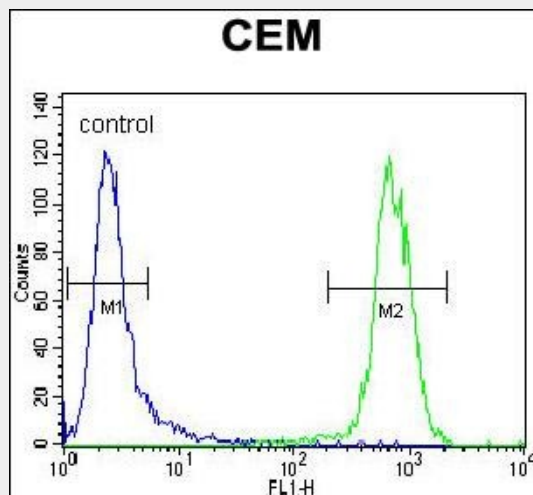
## PON1 Antibody (Center) - Images



Western blot analysis of lysate from human blood plasma tissue lysate, using PON1 Antibody (Center)(Cat. #AP10684c). AP10684c was diluted at 1:1000 at each lane. A goat anti-rabbit IgG H&L(HRP) at 1:5000 dilution was used as the secondary antibody. Lysate at 35ug per lane.



PON1 Antibody (Center) (Cat. #AP10684c) immunohistochemistry analysis in formalin fixed and paraffin embedded human liver tissue followed by peroxidase conjugation of the secondary antibody and DAB staining. This data demonstrates the use of PON1 Antibody (Center) for immunohistochemistry. Clinical relevance has not been evaluated.



PON1 Antibody (Center) (Cat. #AP10684c) flow cytometric analysis of CEM cells (right histogram) compared to a negative control cell (left histogram). FITC-conjugated goat-anti-rabbit secondary antibodies were used for the analysis.

**PON1 Antibody (Center) - Background**

The enzyme encoded by this gene is an arylesterase that mainly hydrolyzes paroxon to produce p-nitrophenol. Paroxon is an organophosphorus anticholinesterase compound that is produced in vivo by oxidation of the insecticide parathion. Polymorphisms in this gene are a risk factor in coronary artery disease. The gene is found in a cluster of three related paraoxonase genes at 7q21.3.

**PON1 Antibody (Center) - References**

Ergun, M.A., et al. Biochem. Genet. (2010) In press :  
 Cagirci, G., et al. J. Heart Valve Dis. 19(4):453-458(2010)  
 Mendonca, M.I., et al. Rev Port Cardiol 29(4):571-580(2010)  
 Hashemi, M., et al. Genet. Mol. Res. 9(3):1735-1741(2010)

Martinez, C., et al. BMC Neurol 10, 71 (2010) :