

**APCS Antibody (C-term)**  
**Affinity Purified Rabbit Polyclonal Antibody (Pab)**  
**Catalog # AP10677b**

**Specification**

---

**APCS Antibody (C-term) - Product Information**

Application	<b>WB, IHC-P,E</b>
Primary Accession	<a href="#">P02743</a>
Other Accession	<a href="#">O13449</a> , <a href="#">NP_001630.1</a>
Reactivity	<b>Human</b>
Host	<b>Rabbit</b>
Clonality	<b>Polyclonal</b>
Isotype	<b>Rabbit IgG</b>
Calculated MW	<b>25387</b>
Antigen Region	<b>151-178</b>

**APCS Antibody (C-term) - Additional Information**

**Gene ID** 325

**Other Names**

Serum amyloid P-component, SAP, 95S alpha-1-glycoprotein, Serum amyloid P-component(1-203), APCS, PTX2

**Target/Specificity**

This APCS antibody is generated from rabbits immunized with a KLH conjugated synthetic peptide between 151-178 amino acids from the C-terminal region of human APCS.

**Dilution**

WB~~1:1000  
IHC-P~~1:50~100

**Format**

Purified polyclonal antibody supplied in PBS with 0.09% (W/V) sodium azide. This antibody is purified through a protein A column, followed by peptide affinity purification.

**Storage**

Maintain refrigerated at 2-8°C for up to 2 weeks. For long term storage store at -20°C in small aliquots to prevent freeze-thaw cycles.

**Precautions**

APCS Antibody (C-term) is for research use only and not for use in diagnostic or therapeutic procedures.

**APCS Antibody (C-term) - Protein Information**

**Name** APCS

### Synonyms PTX2

**Function** Can interact with DNA and histones and may scavenge nuclear material released from damaged circulating cells. May also function as a calcium-dependent lectin.

### Cellular Location

Secreted.

### Tissue Location

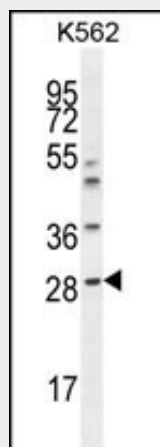
Found in serum and urine.

### APCS Antibody (C-term) - Protocols

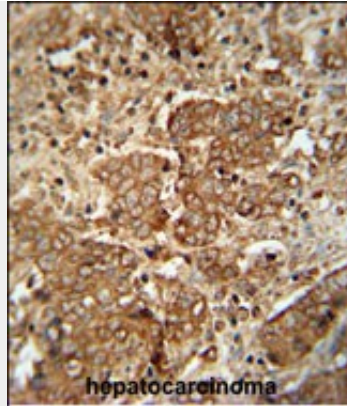
Provided below are standard protocols that you may find useful for product applications.

- [Western Blot](#)
- [Blocking Peptides](#)
- [Dot Blot](#)
- [Immunohistochemistry](#)
- [Immunofluorescence](#)
- [Immunoprecipitation](#)
- [Flow Cytometry](#)
- [Cell Culture](#)

### APCS Antibody (C-term) - Images



APCS Antibody (C-term) (Cat. #AP10677b) western blot analysis in K562 cell line lysates (35ug/lane). This demonstrates the APCS antibody detected the APCS protein (arrow).



APCS antibody (C-term) (Cat. #AP10677b) immunohistochemistry analysis in formalin fixed and paraffin embedded human hepatocarcinoma followed by peroxidase conjugation of the secondary antibody and DAB staining. This data demonstrates the use of the APCS antibody (C-term) for immunohistochemistry. Clinical relevance has not been evaluated.

#### **APCS Antibody (C-term) - Background**

The protein encoded by this gene is a glycoprotein, belonging to the pentraxin family of proteins, which has a characteristic pentameric organization. These family members have considerable sequence homology which is thought to be the result of gene duplication. The binding of the encoded protein to proteins in the pathological amyloid cross-beta fold suggests its possible role as a chaperone. This protein is also thought to control the degradation of chromatin. It has been demonstrated that this protein binds to apoptotic cells at an early stage, which raises the possibility that it is involved in dealing with apoptotic cells in vivo.

#### **APCS Antibody (C-term) - References**

- Song, Z., et al. *Atherosclerosis* 211(1):90-95(2010)
- Davila, S., et al. *Genes Immun.* 11(3):232-238(2010)
- McGeachie, M., et al. *Circulation* 120(24):2448-2454(2009)
- Lu, J., et al. *Nature* 456(7224):989-992(2008)
- Verwey, N.A., et al. *Dement Geriatr Cogn Disord* 26(6):522-527(2008)