

**CD34 Antibody (Center)**  
**Affinity Purified Rabbit Polyclonal Antibody (Pab)**  
**Catalog # AP10666c**

**Specification**

---

**CD34 Antibody (Center) - Product Information**

Application	<b>WB, FC,E</b>
Primary Accession	<a href="#">P28906</a>
Other Accession	<a href="#">NP_001020280</a>
Reactivity	<b>Human</b>
Host	<b>Rabbit</b>
Clonality	<b>Polyclonal</b>
Isotype	<b>Rabbit IgG</b>
Calculated MW	<b>40716</b>
Antigen Region	<b>185-212</b>

**CD34 Antibody (Center) - Additional Information**

**Gene ID** 947

**Other Names**

Hematopoietic progenitor cell antigen CD34, CD34, CD34

**Target/Specificity**

This CD34 antibody is generated from rabbits immunized with a KLH conjugated synthetic peptide between 185-212 amino acids from the Central region of human CD34.

**Dilution**

WB~~1:1000

FC~~1:10~50

**Format**

Purified polyclonal antibody supplied in PBS with 0.09% (W/V) sodium azide. This antibody is purified through a protein A column, followed by peptide affinity purification.

**Storage**

Maintain refrigerated at 2-8°C for up to 2 weeks. For long term storage store at -20°C in small aliquots to prevent freeze-thaw cycles.

**Precautions**

CD34 Antibody (Center) is for research use only and not for use in diagnostic or therapeutic procedures.

**CD34 Antibody (Center) - Protein Information**

**Name** CD34

**Function** Possible adhesion molecule with a role in early hematopoiesis by mediating the

attachment of stem cells to the bone marrow extracellular matrix or directly to stromal cells. Could act as a scaffold for the attachment of lineage specific glycans, allowing stem cells to bind to lectins expressed by stromal cells or other marrow components. Presents carbohydrate ligands to selectins.

#### Cellular Location

Membrane; Single-pass type I membrane protein.

#### Tissue Location

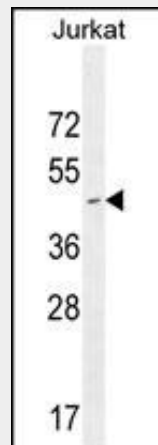
Selectively expressed on hematopoietic progenitor cells and the small vessel endothelium of a variety of tissues

### CD34 Antibody (Center) - Protocols

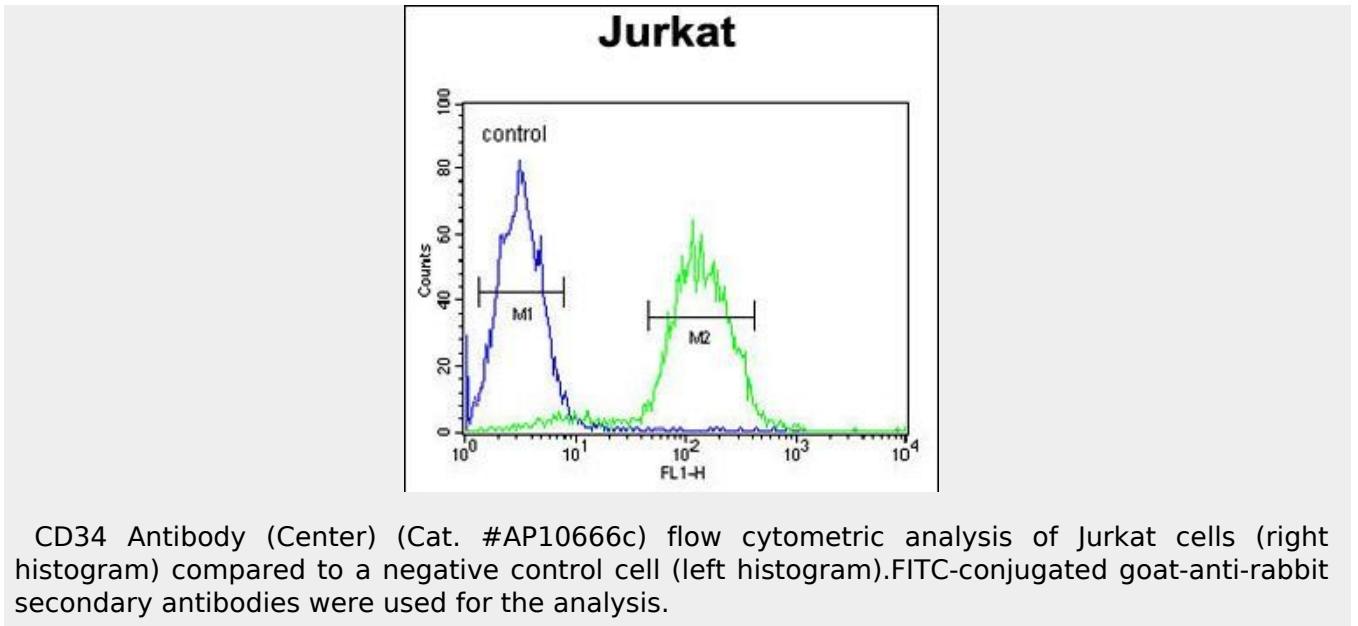
Provided below are standard protocols that you may find useful for product applications.

- [Western Blot](#)
- [Blocking Peptides](#)
- [Dot Blot](#)
- [Immunohistochemistry](#)
- [Immunofluorescence](#)
- [Immunoprecipitation](#)
- [Flow Cytometry](#)
- [Cell Culture](#)

### CD34 Antibody (Center) - Images



CD34 Antibody (Center) (Cat. #AP10666c) western blot analysis in Jurkat cell line lysates (35ug/lane). This demonstrates the CD34 antibody detected the CD34 protein (arrow).



### CD34 Antibody (Center) - Background

CD34 is a monomeric cell surface antigen with a molecular mass of approximately 110 kD that is selectively expressed on human hematopoietic progenitor cells.

### CD34 Antibody (Center) - References

- Eijgelsheim, M., et al. Hum. Mol. Genet. 19(19):3885-3894(2010)
- McCalmont, T.H., et al. J. Cutan. Pathol. 37 (9), 923 (2010) :
- Rose, J.E., et al. Mol. Med. 16 (7-8), 247-253 (2010) :
- Cho, S.Y., et al. Cancer Res. 70(8):3402-3410(2010)
- Gluhovschi, C., et al. Folia Histochem. Cytobiol. 48(2):230-236(2010)