

**HHLA2 Antibody (N-term)**  
**Affinity Purified Rabbit Polyclonal Antibody (Pab)**  
**Catalog # AP10650a**

**Specification**

---

**HHLA2 Antibody (N-term) - Product Information**

Application	WB, IHC-P, FC,E
Primary Accession	<a href="#">O9UM44</a>
Other Accession	<a href="#">NP_009003.1</a>
Reactivity	Human
Host	Rabbit
Clonality	Polyclonal
Isotype	Rabbit IgG
Antigen Region	58-87

**HHLA2 Antibody (N-term) - Additional Information**

**Gene ID** 11148

**Other Names**

HERV-H LTR-associating protein 2, Human endogenous retrovirus-H long terminal repeat-associating protein 2, HHLA2

**Target/Specificity**

This HHLA2 antibody is generated from rabbits immunized with a KLH conjugated synthetic peptide between 58-87 amino acids of human HHLA2.

**Dilution**

WB~~1:2000

IHC-P~~1:25

FC~~1:25

**Format**

Purified polyclonal antibody supplied in PBS with 0.09% (W/V) sodium azide. This antibody is purified through a protein A column, followed by peptide affinity purification.

**Storage**

Maintain refrigerated at 2-8°C for up to 2 weeks. For long term storage store at -20°C in small aliquots to prevent freeze-thaw cycles.

**Precautions**

HHLA2 Antibody (N-term) is for research use only and not for use in diagnostic or therapeutic procedures.

**HHLA2 Antibody (N-term) - Protein Information**

**Name** HHLA2

**Function** Through interaction with TMIGD2, costimulates T-cells in the context of TCR-mediated activation. Enhances T-cell proliferation and cytokine production via an AKT-dependent signaling cascade.

#### **Cellular Location**

Membrane; Single-pass type I membrane protein

#### **Tissue Location**

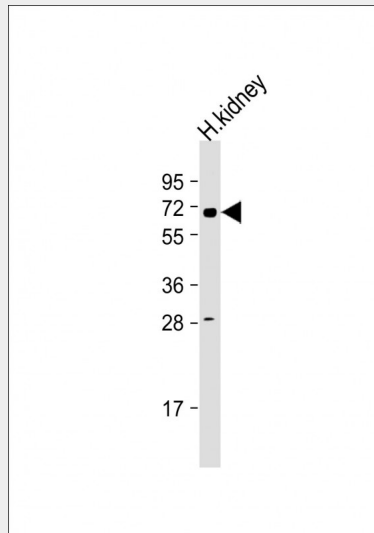
Expressed at high levels in colon, kidney, testis, lung and pancreas, and at lower levels in small intestine, liver and skeletal muscle. In immune cells, highly expressed in B-cells, dendritic cells and macrophages. Not detected in T-cells

### **HHLA2 Antibody (N-term) - Protocols**

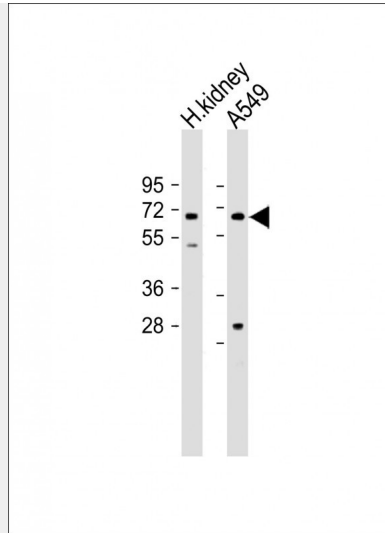
Provided below are standard protocols that you may find useful for product applications.

- [Western Blot](#)
- [Blocking Peptides](#)
- [Dot Blot](#)
- [Immunohistochemistry](#)
- [Immunofluorescence](#)
- [Immunoprecipitation](#)
- [Flow Cytometry](#)
- [Cell Culture](#)

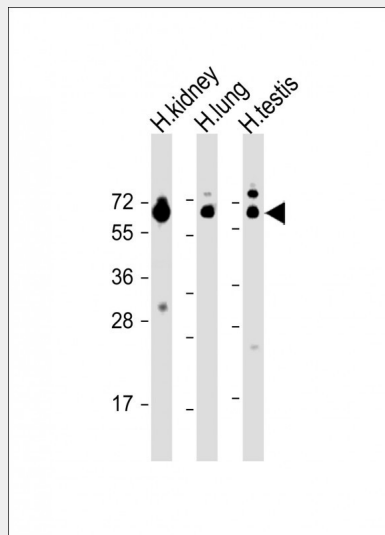
### **HHLA2 Antibody (N-term) - Images**



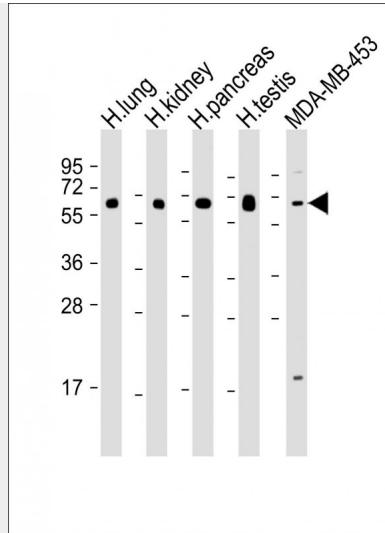
Anti-HHLA2 Antibody (N-term) at 1:2000 dilution + Human kidney tissue lysate Lysates/proteins at 20 µg per lane. Secondary Goat Anti-Rabbit IgG, (H+L), Peroxidase conjugated at 1/10000 dilution. Predicted band size : 70 kDa Blocking/Dilution buffer: 5% NFDM/TBST.



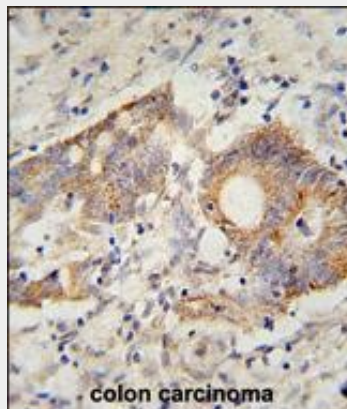
All lanes : Anti-HHLA2 Antibody (N-term) at 1:2000 dilution Lane 1: Human kidney lysate Lane 2: A549 whole cell lysate Lysates/proteins at 20 µg per lane. Secondary Goat Anti-Rabbit IgG, (H+L), Peroxidase conjugated at 1/10000 dilution. Predicted band size : 70 kDa Blocking/Dilution buffer: 5% NFDm/TBST.



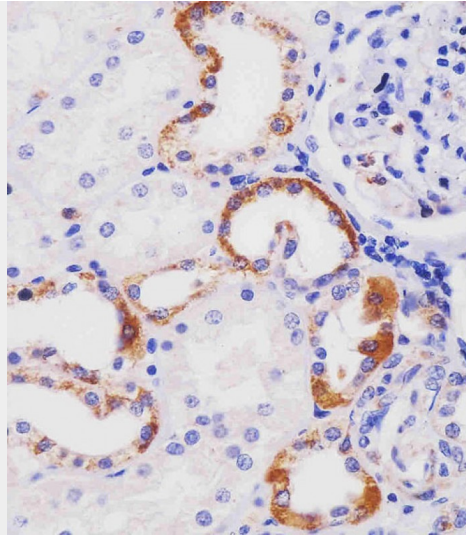
All lanes : Anti-HHLA2 Antibody (N-term) at 1:2000 dilution Lane 1: Human kidney lysate Lane 2: Human lung lysate Lane 3: Human testis lysate Lysates/proteins at 20 µg per lane. Secondary Goat Anti-Rabbit IgG, (H+L), Peroxidase conjugated at 1/10000 dilution. Predicted band size : 70 kDa Blocking/Dilution buffer: 5% NFDm/TBST.



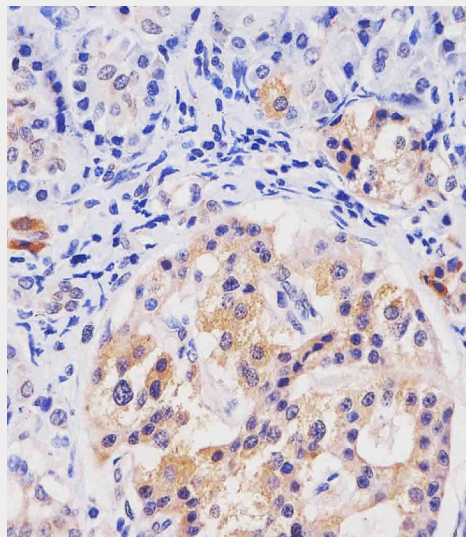
All lanes : Anti-HHLA2 Antibody (N-term) at 1:2000 dilution Lane 1: Human kidney lysate Lane 2: Human lung lysate Lane 3: Human pancreas lysate Lane 4: Human testis lysate Lane 5: MDA-MB-453 whole cell lysate Lysates/proteins at 20 µg per lane. Secondary Goat Anti-Rabbit IgG, (H+L), Peroxidase conjugated at 1/10000 dilution. Predicted band size : 70 kDa Blocking/Dilution buffer: 5% NFDM/TBST.



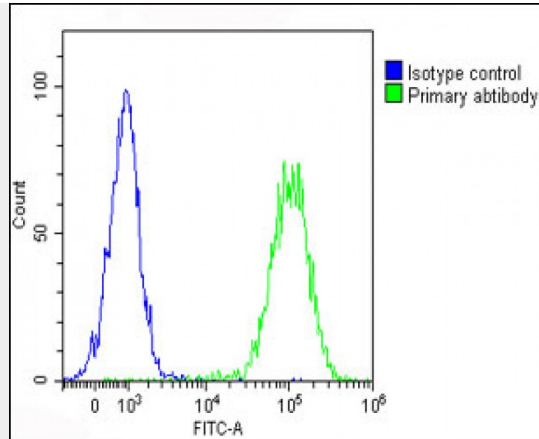
HHLA2 Antibody (N-term) (Cat. #AP10650a) immunohistochemistry analysis in formalin fixed and paraffin embedded human colon carcinoma followed by peroxidase conjugation of the secondary antibody and DAB staining. This data demonstrates the use of the HHLA2 Antibody (N-term) for immunohistochemistry. Clinical relevance has not been evaluated.



AP10650A staining HHLA2 in human kidney tissue sections by Immunohistochemistry (IHC-P - paraformaldehyde-fixed, paraffin-embedded sections). Tissue was fixed with formaldehyde and blocked with 3% BSA for 0.5 hour at room temperature; antigen retrieval was by heat mediation with a citrate buffer (pH6). Samples were incubated with primary antibody (1/25) for 1 hour at 37°C. A undiluted biotinylated goat polyvalent antibody was used as the secondary antibody.



AP10650A staining HHLA2 in human pancreas tissue sections by Immunohistochemistry (IHC-P - paraformaldehyde-fixed, paraffin-embedded sections). Tissue was fixed with formaldehyde and blocked with 3% BSA for 0.5 hour at room temperature; antigen retrieval was by heat mediation with a citrate buffer (pH6). Samples were incubated with primary antibody (1/25) for 1 hour at 37°C. A undiluted biotinylated goat polyvalent antibody was used as the secondary antibody.



Overlay histogram showing Raji cells stained with AP10650a (green line). The cells were fixed with 2% paraformaldehyde and then permeabilized with 90% methanol for 10 min. The cells were then incubated in 2% bovine serum albumin to block non-specific protein-protein interactions followed by the antibody (1:25 dilution) for 60 min at 37°C. The secondary antibody used was Goat-Anti-Rabbit IgG, DyLight® 488 Conjugated Highly Cross-Adsorbed at 1/200 dilution for 40 min at Room temperature. Isotype control antibody (blue line) was rabbit IgG1 (1µg/1x10<sup>6</sup> cells) used under the same conditions. Acquisition of >10,000 events was performed.

#### **HHLA2 Antibody (N-term) - References**

Mager, D.L., et al. Genomics 59(3):255-263(1999)

#### **HHLA2 Antibody (N-term) - Citations**

- [B7-H5/CD28H is a co-stimulatory pathway and correlates with improved prognosis in pancreatic ductal adenocarcinoma.](#)