

GAGE13 Antibody (N-term)
Affinity Purified Rabbit Polyclonal Antibody (Pab)
Catalog # AP10568a

Specification

GAGE13 Antibody (N-term) - Product Information

Application	WB, IHC-P, FC,E
Primary Accession	Q4V321
Reactivity	Human
Host	Rabbit
Clonality	Polyclonal
Isotype	Rabbit IgG
Calculated MW	12957
Antigen Region	1-30

GAGE13 Antibody (N-term) - Additional Information

Gene ID 645051

Other Names

G antigen 13, GAGE-13, G antigen 12A, GAGE-12A, GAGE13, GAGE12A

Target/Specificity

This GAGE13 antibody is generated from rabbits immunized with a KLH conjugated synthetic peptide between 1-30 amino acids from the N-terminal region of human GAGE13.

Dilution

WB~~1:1000
IHC-P~~1:50~100
FC~~1:10~50

Format

Purified polyclonal antibody supplied in PBS with 0.09% (W/V) sodium azide. This antibody is purified through a protein A column, followed by peptide affinity purification.

Storage

Maintain refrigerated at 2-8°C for up to 2 weeks. For long term storage store at -20°C in small aliquots to prevent freeze-thaw cycles.

Precautions

GAGE13 Antibody (N-term) is for research use only and not for use in diagnostic or therapeutic procedures.

GAGE13 Antibody (N-term) - Protein Information

Name GAGE13 ([HGNC:29081](#))

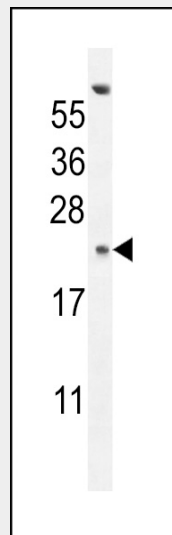
Synonyms GAGE12A

GAGE13 Antibody (N-term) - Protocols

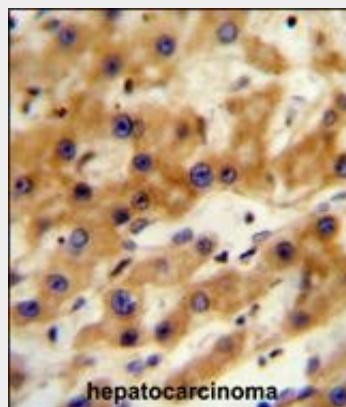
Provided below are standard protocols that you may find useful for product applications.

- [Western Blot](#)
- [Blocking Peptides](#)
- [Dot Blot](#)
- [Immunohistochemistry](#)
- [Immunofluorescence](#)
- [Immunoprecipitation](#)
- [Flow Cytometry](#)
- [Cell Culture](#)

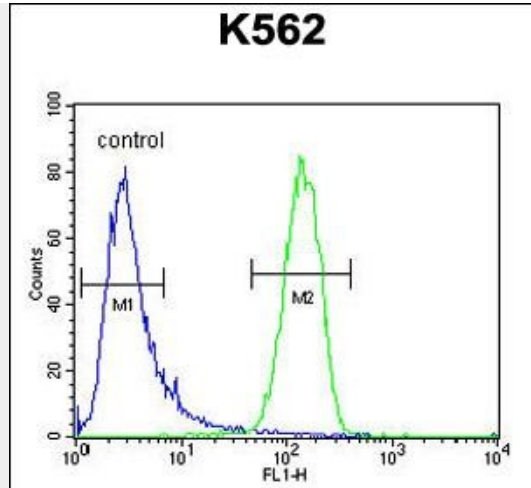
GAGE13 Antibody (N-term) - Images



GAGE13 Antibody (N-term) (Cat. #AP10568a) western blot analysis in K562 cell line lysates (35ug/lane). This demonstrates the GAGE13 antibody detected the GAGE13 protein (arrow).



GAGE13 Antibody (N-term) (Cat. #AP10568a) immunohistochemistry analysis in formalin fixed and paraffin embedded human hepatocarcinoma followed by peroxidase conjugation of the secondary antibody and DAB staining. This data demonstrates the use of the GAGE13 Antibody (N-term) for immunohistochemistry. Clinical relevance has not been evaluated.



GAGE13 Antibody (N-term) (Cat. #AP10568a) flow cytometric analysis of K562 cells (right histogram) compared to a negative control cell (left histogram). FITC-conjugated goat-anti-rabbit secondary antibodies were used for the analysis.