

PUSL1 Antibody (C-term)
Affinity Purified Rabbit Polyclonal Antibody (Pab)
Catalog # AP10547b

Specification

PUSL1 Antibody (C-term) - Product Information

Application	WB,E
Primary Accession	O8N0Z8
Other Accession	NP_699170.1
Reactivity	Human
Host	Rabbit
Clonality	Polyclonal
Isotype	Rabbit IgG
Calculated MW	33233
Antigen Region	206-235

PUSL1 Antibody (C-term) - Additional Information

Gene ID 126789

Other Names

tRNA pseudouridine synthase-like 1, 5499-, tRNA pseudouridylate synthase-like 1, tRNA-uridine isomerase-like 1, PUSL1

Target/Specificity

This PUSL1 antibody is generated from rabbits immunized with a KLH conjugated synthetic peptide between 206-235 amino acids from the C-terminal region of human PUSL1.

Dilution

WB~~1:1000

Format

Purified polyclonal antibody supplied in PBS with 0.09% (W/V) sodium azide. This antibody is purified through a protein A column, followed by peptide affinity purification.

Storage

Maintain refrigerated at 2-8°C for up to 2 weeks. For long term storage store at -20°C in small aliquots to prevent freeze-thaw cycles.

Precautions

PUSL1 Antibody (C-term) is for research use only and not for use in diagnostic or therapeutic procedures.

PUSL1 Antibody (C-term) - Protein Information

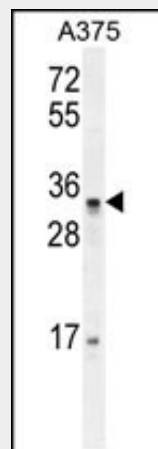
Name PUSL1

PUSL1 Antibody (C-term) - Protocols

Provided below are standard protocols that you may find useful for product applications.

- [Western Blot](#)
- [Blocking Peptides](#)
- [Dot Blot](#)
- [Immunohistochemistry](#)
- [Immunofluorescence](#)
- [Immunoprecipitation](#)
- [Flow Cytometry](#)
- [Cell Culture](#)

PUSL1 Antibody (C-term) - Images



PUSL1 Antibody (C-term) (Cat. #AP10547b) western blot analysis in A375 cell line lysates (35ug/lane). This demonstrates the PUSL1 antibody detected the PUSL1 protein (arrow).

PUSL1 Antibody (C-term) - References

Lamesch, P., et al. Genomics 89(3):307-315(2007)