

**5HT3E Antibody (Center)**  
**Affinity Purified Rabbit Polyclonal Antibody (Pab)**  
**Catalog # AP10528c**

**Specification**

---

**5HT3E Antibody (Center) - Product Information**

Application	<b>WB, FC,E</b>
Primary Accession	<a href="#">A5X5Y0</a>
Other Accession	<a href="#">NP_872395.2</a>
Reactivity	<b>Human</b>
Host	<b>Rabbit</b>
Clonality	<b>Polyclonal</b>
Isotype	<b>Rabbit IgG</b>
Calculated MW	<b>51438</b>
Antigen Region	<b>126-154</b>

**5HT3E Antibody (Center) - Additional Information**

**Gene ID** 285242

**Other Names**

5-hydroxytryptamine receptor 3E, 5-HT3-E, 5-HT3E, Serotonin receptor 3E, HTR3E

**Target/Specificity**

This 5HT3E antibody is generated from rabbits immunized with a KLH conjugated synthetic peptide between 126-154 amino acids from the Central region of human 5HT3E.

**Dilution**

WB~~1:1000

FC~~1:10~50

**Format**

Purified polyclonal antibody supplied in PBS with 0.09% (W/V) sodium azide. This antibody is purified through a protein A column, followed by peptide affinity purification.

**Storage**

Maintain refrigerated at 2-8°C for up to 2 weeks. For long term storage store at -20°C in small aliquots to prevent freeze-thaw cycles.

**Precautions**

5HT3E Antibody (Center) is for research use only and not for use in diagnostic or therapeutic procedures.

**5HT3E Antibody (Center) - Protein Information**

**Name** HTR3E ([HGNC:24005](#))

**Function** Forms serotonin (5-hydroxytryptamine/5-HT3)-activated cation- selective channel

complexes, which when activated cause fast, depolarizing responses in neurons.

#### Cellular Location

Postsynaptic cell membrane; Multi-pass membrane protein. Cell membrane; Multi-pass membrane protein. Note=Presumably retained within the endoplasmic reticulum unless complexed with HTR3A.

#### Tissue Location

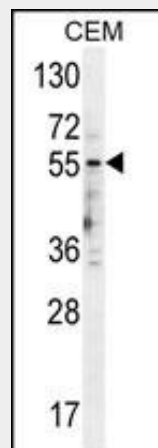
Expressed in adult colon and intestine.

### 5HT3E Antibody (Center) - Protocols

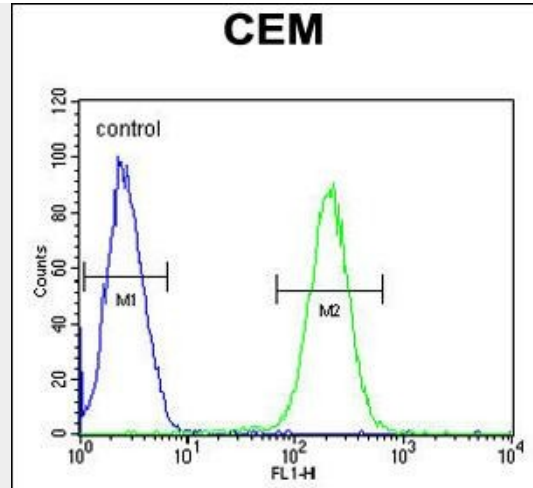
Provided below are standard protocols that you may find useful for product applications.

- [Western Blot](#)
- [Blocking Peptides](#)
- [Dot Blot](#)
- [Immunohistochemistry](#)
- [Immunofluorescence](#)
- [Immunoprecipitation](#)
- [Flow Cytometry](#)
- [Cell Culture](#)

### 5HT3E Antibody (Center) - Images



5HT3E Antibody (Center) (Cat. #AP10528c) western blot analysis in CEM cell line lysates (35ug/lane). This demonstrates the 5HT3E antibody detected the 5HT3E protein (arrow).



5HT3E Antibody (Center) (Cat. #AP10528c) flow cytometric analysis of CEM cells (right histogram) compared to a negative control cell (left histogram). FITC-conjugated goat-anti-rabbit secondary antibodies were used for the analysis.

### 5HT3E Antibody (Center) - Background

The product of this gene belongs to the ligand-gated ion channel receptor superfamily. HTR3E encodes a subunit E of the type 3 receptor for 5-hydroxytryptamine (serotonin), a biogenic hormone that functions as a neurotransmitter, a hormone, and a mitogen. This receptor causes fast, depolarizing responses in neurons after activation. Genes encoding subunits C, D and E form a cluster on chromosome 3. An alternative splice variant has been described but its full length sequence has not been determined.

### 5HT3E Antibody (Center) - References

- Walstab, J., et al. J. Biol. Chem. 285(35):26956-26965(2010)
- Hammer, C., et al. Pharmacogenomics 11(7):943-950(2010)
- Lennertz, L., et al. Eur Neuropsychopharmacol 20(6):414-420(2010)
- Goecke, T.W., et al. Acta Obstet Gynecol Scand 89(1):7-14(2010)
- Schuhmacher, A., et al. Pharmacogenet. Genomics 19(11):843-851(2009)