

**CASC4 Antibody (C-term)**  
**Affinity Purified Rabbit Polyclonal Antibody (Pab)**  
**Catalog # AP10511b**

**Specification**

---

**CASC4 Antibody (C-term) - Product Information**

Application	WB, FC,E
Primary Accession	<a href="#">O6P4E1</a>
Other Accession	<a href="#">O6P2L7</a> , <a href="#">NP_816929.1</a>
Reactivity	Human, Mouse
Host	Rabbit
Clonality	Polyclonal
Isotype	Rabbit IgG
Calculated MW	49498
Antigen Region	336-365

**CASC4 Antibody (C-term) - Additional Information**

**Gene ID** 113201

**Other Names**

Protein CASC4, Cancer susceptibility candidate gene 4 protein, CASC4

**Target/Specificity**

This CASC4 antibody is generated from rabbits immunized with a KLH conjugated synthetic peptide between 336-365 amino acids from the C-terminal region of human CASC4.

**Dilution**

WB~~1:1000

FC~~1:10~50

**Format**

Purified polyclonal antibody supplied in PBS with 0.09% (W/V) sodium azide. This antibody is purified through a protein A column, followed by peptide affinity purification.

**Storage**

Maintain refrigerated at 2-8°C for up to 2 weeks. For long term storage store at -20°C in small aliquots to prevent freeze-thaw cycles.

**Precautions**

CASC4 Antibody (C-term) is for research use only and not for use in diagnostic or therapeutic procedures.

**CASC4 Antibody (C-term) - Protein Information**

**Name** GOLM2 ([HGNC:24892](#))

**Synonyms** CASC4

## Cellular Location

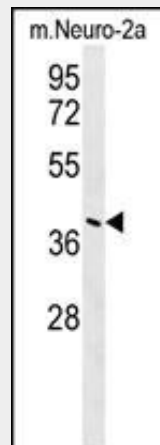
Membrane; Single-pass type II membrane protein

## CASC4 Antibody (C-term) - Protocols

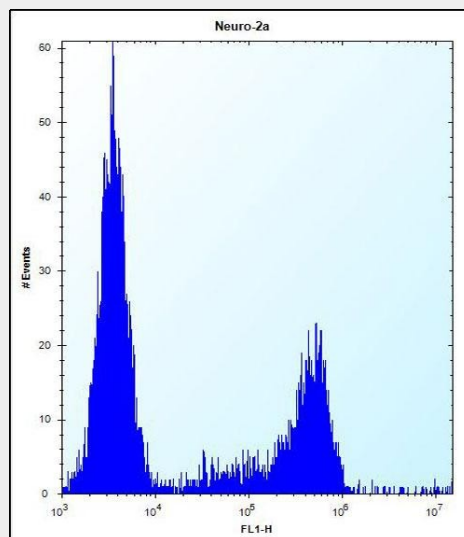
Provided below are standard protocols that you may find useful for product applications.

- [Western Blot](#)
- [Blocking Peptides](#)
- [Dot Blot](#)
- [Immunohistochemistry](#)
- [Immunofluorescence](#)
- [Immunoprecipitation](#)
- [Flow Cytometry](#)
- [Cell Culture](#)

## CASC4 Antibody (C-term) - Images



CASC4 Antibody (C-term) (Cat. #AP10511b) western blot analysis in mouse Neuro-2a cell line lysates (35ug/lane). This demonstrates the CASC4 antibody detected the CASC4 protein (arrow).



CASC4 Antibody (C-term) (Cat. #AP10511b) flow cytometric analysis of Neuro-2a cells (right

histogram) compared to a negative control cell (left histogram).FITC-conjugated donkey-anti-rabbit secondary antibodies were used for the analysis.

### **CASC4 Antibody (C-term) - Background**

The increased expression level of this gene is associated with HER-2/neu proto-oncogene overexpression. Amplification and resulting overexpression of this proto-oncogene are found in approximately 30% of human breast and 20% of human ovarian cancers. Further characterization of the product of this gene may yield insight into the fundamental biology and pathogenetic effects of HER-2/neu overexpression in human breast and ovarian cancer cells. Alternatively spliced variants encoding different isoforms have been identified for this gene.

### **CASC4 Antibody (C-term) - References**

- Lamesch, P., et al. Genomics 89(3):307-315(2007)
- Clark, H.F., et al. Genome Res. 13(10):2265-2270(2003)
- Sato, T., et al. Onkologie 26(3):268-271(2003)
- Scheer, M., et al. Mund Kiefer Gesichtschir 7(3):138-145(2003)
- Oh, J.J., et al. Nucleic Acids Res. 27(20):4008-4017(1999)