

**PRSS3 Antibody (N-term)**  
**Affinity Purified Rabbit Polyclonal Antibody (Pab)**  
**Catalog # AP10489a**

**Specification**

---

**PRSS3 Antibody (N-term) - Product Information**

Application	<b>WB, IHC-P, FC,E</b>
Primary Accession	<a href="#">P35030-1</a>
Reactivity	<b>Human</b>
Host	<b>Rabbit</b>
Clonality	<b>Polyclonal</b>
Isotype	<b>Rabbit IgG</b>
Antigen Region	<b>13-40</b>

**PRSS3 Antibody (N-term) - Additional Information**

**Other Names**

Trypsin-3, Brain trypsinogen, Mesotrypsinogen, Serine protease 3, Serine protease 4, Trypsin III, Trypsin IV, PRSS3, PRSS4, TRY3, TRY4

**Target/Specificity**

This PRSS3 antibody is generated from rabbits immunized with a KLH conjugated synthetic peptide between 13-40 amino acids from the N-terminal region of human PRSS3.

**Dilution**

WB~~1:1000  
IHC-P~~1:50~100  
FC~~1:10~50

**Format**

Purified polyclonal antibody supplied in PBS with 0.09% (W/V) sodium azide. This antibody is purified through a protein A column, followed by peptide affinity purification.

**Storage**

Maintain refrigerated at 2-8°C for up to 2 weeks. For long term storage store at -20°C in small aliquots to prevent freeze-thaw cycles.

**Precautions**

PRSS3 Antibody (N-term) is for research use only and not for use in diagnostic or therapeutic procedures.

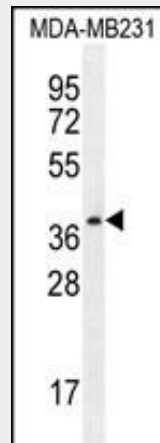
**PRSS3 Antibody (N-term) - Protein Information**

**PRSS3 Antibody (N-term) - Protocols**

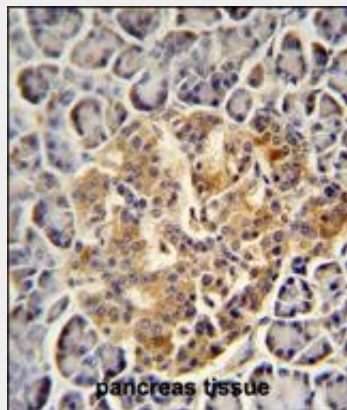
Provided below are standard protocols that you may find useful for product applications.

- [Western Blot](#)
- [Blocking Peptides](#)
- [Dot Blot](#)
- [Immunohistochemistry](#)
- [Immunofluorescence](#)
- [Immunoprecipitation](#)
- [Flow Cytometry](#)
- [Cell Culture](#)

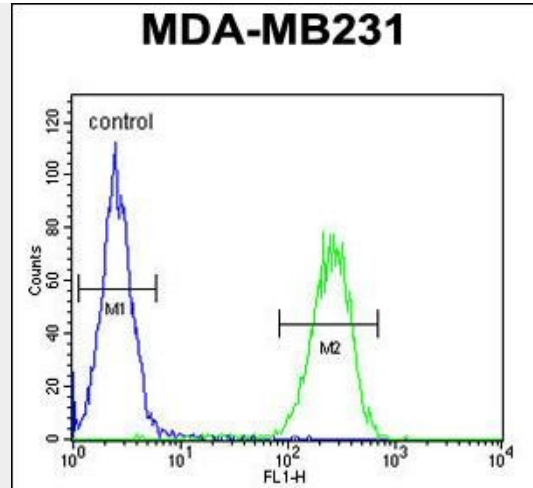
### PRSS3 Antibody (N-term) - Images



PRSS3 Antibody (N-term) (Cat. #AP10489a) western blot analysis in MDA-MB231 cell line lysates (35ug/lane). This demonstrates the PRSS3 antibody detected the PRSS3 protein (arrow).



PRSS3 antibody (N-term) (Cat. #AP10489a) immunohistochemistry analysis in formalin fixed and paraffin embedded human pancreas tissue followed by peroxidase conjugation of the secondary antibody and DAB staining. This data demonstrates the use of the PRSS3 antibody (N-term) for immunohistochemistry. Clinical relevance has not been evaluated.



PRSS3 Antibody (N-term) (Cat. #AP10489a) flow cytometric analysis of MDA-MB231 cells (right histogram) compared to a negative control cell (left histogram). FITC-conjugated goat-anti-rabbit secondary antibodies were used for the analysis.

### **PRSS3 Antibody (N-term) - Background**

PRSS3 encodes a trypsinogen, which is a member of the trypsin family of serine proteases. This enzyme is expressed in the brain and pancreas and is resistant to common trypsin inhibitors. It is active on peptide linkages involving the carboxyl group of lysine or arginine. PRSS3 is localized to the locus of T cell receptor beta variable orphans on chromosome 9. Four transcript variants encoding different isoforms have been described for this gene.

### **PRSS3 Antibody (N-term) - References**

Jiang, G., et al. Gut 59(11):1535-1544(2010)  
Nakanishi, J., et al. J. Invest. Dermatol. 130(4):944-952(2010)  
Salameh, M.A., et al. J. Biol. Chem. 285(3):1939-1949(2010)  
Rosendahl, J., et al. Pancreatology 10 (2-3), 243-249 (2010) :  
Koistinen, H., et al. Neuroscience 160(1):97-102(2009)